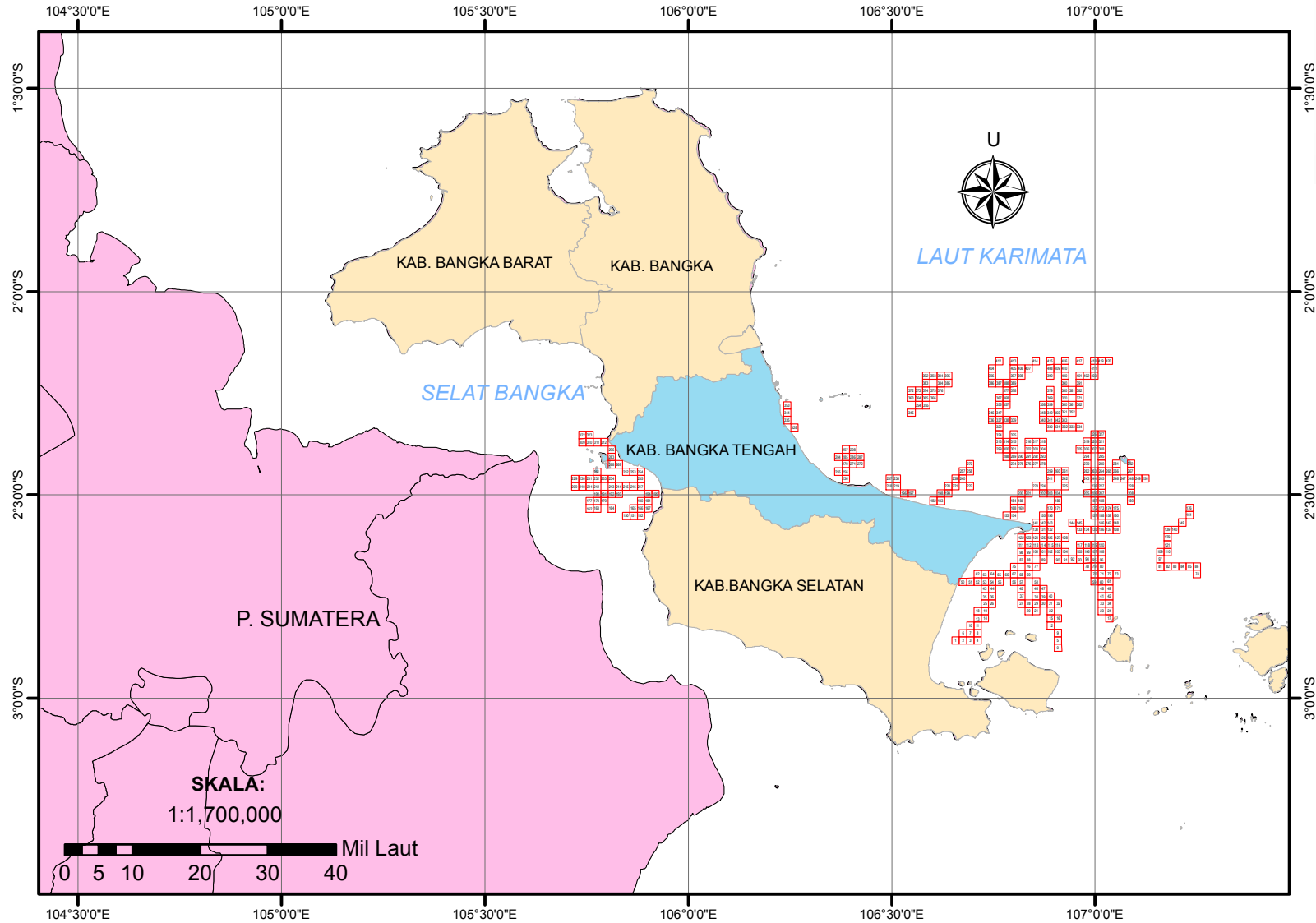
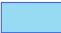
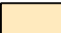




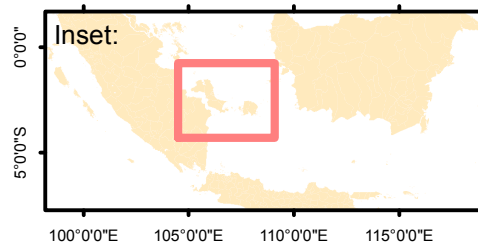


SISTEM INFORMASI DAERAH POTENSIAL PENANGKAPAN IKAN PERAIRAN KABUPATEN BANGKA TENGAH TANGGAL 2 JUNI 2020



Legenda:

-  Kab. Bangka Tengah
-  Prov. Bangka Belitung
-  P. Sumatera
-  Daerah Potensial Penangkapan Ikan



Dibuat oleh:
**Dinas Perikanan
Kabupaten Bangka Tengah**

- Sumber Data:
1. Data Ocean Color
 2. Data NCEP
 3. Peta RBI Dijital

CATATAN : BERLAKU MULAI 2 JUNI 2020 HINGGA 5 JUNI 2020

NO	Lat	Lon
	Dec	Dec
0	-2.875499	106.909126
1	-2.857808	106.657279
2	-2.857782	106.675267
3	-2.857756	106.693255
4	-2.857729	106.711243
5	-2.857415	106.909096
6	-2.839696	106.675241
7	-2.839669	106.693229
8	-2.839643	106.711216
9	-2.839331	106.909067
10	-2.821583	106.693203
11	-2.821557	106.711119
12	-2.821277	106.891052
13	-2.803471	106.711163
14	-2.803444	106.72915
15	-2.803192	106.891023
16	-2.803163	106.909008
17	-2.80295	107.034897
18	-2.785384	106.711137
19	-2.785358	106.729124
20	-2.785194	106.837039
21	-2.785166	106.855024
22	-2.785108	106.890994
23	-2.784898	107.016882
24	-2.784867	107.034865
25	-2.767272	106.729097
26	-2.767246	106.747083
27	-2.767137	106.819026
28	-2.767109	106.837011
29	-2.767081	106.854996
30	-2.767053	106.87298
31	-2.767024	106.890965
32	-2.766995	106.908949
33	-2.766815	107.016851
34	-2.766784	107.034835
35	-2.749186	106.729071
36	-2.74916	106.747057
37	-2.749052	106.818998
38	-2.748996	106.854968
39	-2.748968	106.872952
40	-2.74894	106.890936
41	-2.748732	107.016821
42	-2.748702	107.034804
43	-2.7311	106.729045
44	-2.731074	106.747031
45	-2.730967	106.818971
46	-2.730912	106.85494
47	-2.730884	106.872924
48	-2.73065	107.016791
49	-2.730619	107.034773
50	-2.713091	106.675063
51	-2.713066	106.693049
52	-2.71304	106.711034
53	-2.713014	106.729019
54	-2.712988	106.747005
55	-2.712962	106.76499
56	-2.712909	106.800959
57	-2.712882	106.818944
58	-2.712827	106.854912
59	-2.712597	106.998778
60	-2.712567	107.016761
61	-2.712536	107.034743
62	-2.694954	106.711009
63	-2.694928	106.728994
64	-2.694903	106.746979
65	-2.694877	106.764963
66	-2.69485	106.782948
67	-2.694824	106.800932
68	-2.694797	106.818917
69	-2.69477	106.836901
70	-2.694513	106.998749
71	-2.694484	107.016731
72	-2.694454	107.034713
73	-2.694423	107.052694
74	-2.694072	107.25048
75	-2.676738	106.800906
76	-2.676685	106.836874
77	-2.676658	106.854857
78	-2.67646	106.980737
79	-2.67643	106.998719

Latitude			
DD	MM	SS	Position
2	52	31.80	S
2	51	28.11	S
2	51	28.02	S
2	51	27.92	S
2	51	27.82	S
2	51	26.69	S
2	50	22.91	S
2	50	22.81	S
2	50	22.71	S
2	50	21.59	S
2	49	17.70	S
2	49	17.61	S
2	49	16.60	S
2	48	12.50	S
2	48	12.40	S
2	48	11.49	S
2	48	11.39	S
2	48	10.62	S
2	47	7.38	S
2	47	7.29	S
2	47	6.70	S
2	47	6.60	S
2	47	6.39	S
2	47	5.63	S
2	47	5.52	S
2	46	2.18	S
2	46	2.09	S
2	46	1.69	S
2	46	1.59	S
2	46	1.49	S
2	46	1.39	S
2	46	1.29	S
2	46	1.18	S
2	46	0.53	S
2	46	0.42	S
2	44	57.07	S
2	44	56.98	S
2	44	56.59	S
2	44	56.39	S
2	44	56.28	S
2	44	56.18	S
2	44	55.44	S
2	44	55.33	S
2	43	51.96	S
2	43	51.87	S
2	43	51.48	S
2	43	51.28	S
2	43	51.18	S
2	43	50.34	S
2	43	50.23	S
2	42	47.13	S
2	42	47.04	S
2	42	46.94	S
2	42	46.85	S
2	42	46.76	S
2	42	46.66	S
2	42	46.47	S
2	42	46.38	S
2	42	46.18	S
2	42	45.35	S
2	42	45.24	S
2	42	45.13	S
2	41	41.83	S
2	41	41.74	S
2	41	41.65	S
2	41	41.56	S
2	41	41.46	S
2	41	41.37	S
2	41	41.27	S
2	41	41.17	S
2	41	40.25	S
2	41	40.14	S
2	41	40.03	S
2	41	39.92	S
2	41	38.66	S
2	40	36.26	S
2	40	36.07	S
2	40	35.97	S
2	40	35.26	S
2	40	35.15	S

Longitude			
DD	MM	SS	Position
106	54	32.85	E
106	39	26.20	E
106	40	30.96	E
106	41	35.72	E
106	42	40.47	E
106	54	32.75	E
106	40	30.87	E
106	41	35.62	E
106	42	40.38	E
106	54	32.64	E
106	41	35.53	E
106	42	40.28	E
106	53	27.79	E
106	42	40.19	E
106	43	44.94	E
106	53	27.68	E
106	54	32.43	E
107	2	5.63	E
106	42	40.09	E
106	43	44.85	E
106	50	13.34	E
106	51	18.09	E
106	53	27.58	E
107	1	0.78	E
107	2	5.51	E
106	43	44.75	E
106	44	49.50	E
106	49	8.49	E
106	50	13.24	E
106	51	17.99	E
106	52	22.73	E
106	53	27.47	E
106	54	32.22	E
107	1	0.66	E
107	2	5.41	E
106	43	44.66	E
106	44	49.41	E
106	49	8.39	E
106	51	17.88	E
106	52	22.63	E
106	53	27.37	E
107	1	0.56	E
107	2	5.29	E
106	43	44.56	E
106	44	49.31	E
106	49	8.30	E
106	51	17.78	E
106	52	22.53	E
107	1	0.45	E
107	2	5.18	E
106	40	30.23	E
106	41	34.98	E
106	42	39.72	E
106	43	44.47	E
106	44	49.22	E
106	45	53.96	E
106	48	3.45	E
106	49	8.20	E
106	51	17.68	E
106	59	55.60	E
107	1	0.34	E
107	2	5.07	E
106	42	39.63	E
106	43	44.38	E
106	44	49.12	E
106	45	53.87	E
106	46	58.61	E
106	48	3.36	E
106	49	8.10	E
106	50	12.84	E
106	59	55.50	E
107	1	0.23	E
107	2	4.97	E
107	3	9.70	E
107	15	1.73	E
106	48	3.26	E
106	50	12.75	E
106	51	17.49	E
106	58	50.65	E
106	59	55.39	E

CATATAN : BERLAKU MULAI 2 JUNI 2020 HINGGA 5 JUNI 2020

80	-2.676401	107.016701	2	40	35.04	S	107	1	0.12	E
81	-2.676154	107.160549	2	40	34.15	S	107	9	37.98	E
82	-2.676122	107.178529	2	40	34.04	S	107	10	42.70	E
83	-2.67609	107.196509	2	40	33.92	S	107	11	47.43	E
84	-2.676058	107.214488	2	40	33.81	S	107	12	52.16	E
85	-2.676025	107.232467	2	40	33.69	S	107	13	56.88	E
86	-2.675992	107.250447	2	40	33.57	S	107	15	1.61	E
87	-2.658627	106.818863	2	39	31.06	S	106	49	7.91	E
88	-2.6586	106.836847	2	39	30.96	S	106	50	12.65	E
89	-2.658546	106.872813	2	39	30.77	S	106	52	22.13	E
90	-2.65849	106.908779	2	39	30.56	S	106	54	31.60	E
91	-2.658462	106.926762	2	39	30.46	S	106	55	36.34	E
92	-2.658434	106.944744	2	39	30.36	S	106	56	41.08	E
93	-2.658405	106.962726	2	39	30.26	S	106	57	45.81	E
94	-2.658376	106.980708	2	39	30.15	S	106	58	50.55	E
95	-2.658347	106.99869	2	39	30.05	S	106	59	55.28	E
96	-2.658318	107.016672	2	39	29.94	S	107	1	0.02	E
97	-2.658073	107.160517	2	39	29.06	S	107	9	37.86	E
98	-2.640542	106.818837	2	38	25.95	S	106	49	7.81	E
99	-2.640515	106.83682	2	38	25.85	S	106	50	12.55	E
100	-2.640488	106.854803	2	38	25.76	S	106	51	17.29	E
101	-2.640461	106.872786	2	38	25.66	S	106	52	22.03	E
102	-2.640434	106.890769	2	38	25.56	S	106	53	26.77	E
103	-2.640406	106.908751	2	38	25.46	S	106	54	31.50	E
104	-2.640378	106.926734	2	38	25.36	S	106	55	36.24	E
105	-2.640322	106.962698	2	38	25.16	S	106	57	45.71	E
106	-2.640293	106.98068	2	38	25.05	S	106	58	50.45	E
107	-2.640264	106.998661	2	38	24.95	S	106	59	55.18	E
108	-2.640235	107.016642	2	38	24.85	S	107	0	59.91	E
109	-2.639992	107.160486	2	38	23.97	S	107	9	37.75	E
110	-2.63996	107.178465	2	38	23.86	S	107	10	42.47	E
111	-2.622457	106.818811	2	37	20.85	S	106	49	7.72	E
112	-2.62243	106.836794	2	37	20.75	S	106	50	12.46	E
113	-2.622403	106.854777	2	37	20.65	S	106	51	17.20	E
114	-2.622377	106.872759	2	37	20.56	S	106	52	21.93	E
115	-2.622349	106.890742	2	37	20.46	S	106	53	26.67	E
116	-2.622322	106.908724	2	37	20.36	S	106	54	31.41	E
117	-2.622238	106.962669	2	37	20.06	S	106	57	45.61	E
118	-2.62221	106.980651	2	37	19.96	S	106	58	50.34	E
119	-2.622181	106.998632	2	37	19.85	S	106	59	55.08	E
120	-2.622152	107.016613	2	37	19.75	S	107	0	59.81	E
121	-2.621879	107.178434	2	37	18.76	S	107	10	42.36	E
122	-2.604371	106.818785	2	36	15.74	S	106	49	7.63	E
123	-2.604345	106.836767	2	36	15.64	S	106	50	12.36	E
124	-2.604319	106.85475	2	36	15.55	S	106	51	17.10	E
125	-2.604292	106.872732	2	36	15.45	S	106	52	21.84	E
126	-2.604265	106.890715	2	36	15.35	S	106	53	26.57	E
127	-2.604238	106.908697	2	36	15.26	S	106	54	31.31	E
128	-2.60421	106.926678	2	36	15.16	S	106	55	36.04	E
129	-2.603798	107.178403	2	36	13.67	S	107	10	42.25	E
130	-2.586234	106.854724	2	35	10.44	S	106	51	17.01	E
131	-2.586208	106.872706	2	35	10.35	S	106	52	21.74	E
132	-2.586181	106.890688	2	35	10.25	S	106	53	26.48	E
133	-2.586071	106.962614	2	35	9.86	S	106	57	45.41	E
134	-2.586043	106.980594	2	35	9.75	S	106	58	50.14	E
135	-2.586014	106.998575	2	35	9.65	S	106	59	54.87	E
136	-2.585986	107.016556	2	35	9.55	S	107	0	59.60	E
137	-2.585957	107.034536	2	35	9.45	S	107	2	4.33	E
138	-2.585928	107.052516	2	35	9.34	S	107	3	9.06	E
139	-2.585717	107.178372	2	35	8.58	S	107	10	42.14	E
140	-2.585686	107.19635	2	35	8.47	S	107	11	46.86	E
141	-2.568149	106.854697	2	34	5.34	S	106	51	16.91	E
142	-2.568123	106.872679	2	34	5.24	S	106	52	21.64	E
143	-2.568096	106.890661	2	34	5.15	S	106	53	26.38	E
144	-2.568015	106.944605	2	34	4.85	S	106	56	40.58	E
145	-2.567987	106.962586	2	34	4.75	S	106	57	45.31	E
146	-2.567903	107.016527	2	34	4.45	S	107	0	59.50	E
147	-2.567874	107.034507	2	34	4.35	S	107	2	4.23	E
148	-2.567845	107.052487	2	34	4.24	S	107	3	8.95	E
149	-2.567574	107.214297	2	34	3.27	S	107	12	51.47	E
150	-2.551128	105.847459	2	33	4.06	S	105	50	50.85	E
151	-2.551116	105.865448	2	33	4.02	S	105	51	55.61	E
152	-2.551104	105.883438	2	33	3.97	S	105	53	0.38	E
153	-2.550167	106.782743	2	33	0.60	S	106	46	57.87	E
154	-2.550142	106.800726	2	33	0.51	S	106	48	2.61	E
155	-2.550038	106.872653	2	33	0.14	S	106	52	21.55	E
156	-2.550012	106.890634	2	33	0.04	S	106	53	26.28	E
157	-2.549848	106.998519	2	32	59.45	S	106	59	54.67	E
158	-2.54982	107.016499	2	32	59.35	S	107	0	59.40	E
159	-2.549791	107.034479	2	32	59.25	S	107	2	4.12	E
160	-2.549763	107.052459	2	32	59.15	S	107	3	8.85	E
161	-2.549462	107.232244	2	32	58.06	S	107	13	56.08	E
162	-2.533092	105.757502	2	31	59.13	S	105	45	27.01	E

CATATAN : BERLAKU MULAI 2 JUNI 2020 HINGGA 5 JUNI 2020

163	-2.533081	105.775491	2	31	59.09	S	105	46	31.77	E
164	-2.533059	105.811469	2	31	59.01	S	105	48	41.29	E
165	-2.533024	105.865436	2	31	58.89	S	105	51	55.57	E
166	-2.533011	105.883425	2	31	58.84	S	105	53	0.33	E
167	-2.532999	105.901414	2	31	58.80	S	105	54	5.09	E
168	-2.532056	106.8007	2	31	55.40	S	106	48	2.52	E
169	-2.532031	106.818682	2	31	55.31	S	106	49	7.26	E
170	-2.531928	106.890608	2	31	54.94	S	106	53	26.19	E
171	-2.531901	106.908589	2	31	54.84	S	106	54	30.92	E
172	-2.531765	106.998491	2	31	54.35	S	106	59	54.57	E
173	-2.531737	107.016471	2	31	54.25	S	107	0	59.30	E
174	-2.531709	107.034451	2	31	54.15	S	107	2	4.02	E
175	-2.53168	107.05243	2	31	54.05	S	107	3	8.75	E
176	-2.531381	107.232213	2	31	52.97	S	107	13	55.97	E
177	-2.514999	105.757491	2	30	54.00	S	105	45	26.97	E
178	-2.514988	105.77548	2	30	53.96	S	105	46	31.73	E
179	-2.514977	105.793469	2	30	53.92	S	105	47	36.49	E
180	-2.514919	105.883413	2	30	53.71	S	105	53	0.29	E
181	-2.514907	105.901402	2	30	53.67	S	105	54	5.05	E
182	-2.51423	106.602866	2	30	51.23	S	106	36	10.32	E
183	-2.514208	106.620849	2	30	51.15	S	106	37	15.06	E
184	-2.513971	106.800676	2	30	50.30	S	106	48	2.43	E
185	-2.513946	106.818657	2	30	50.21	S	106	49	7.17	E
186	-2.513817	106.908563	2	30	49.74	S	106	54	30.83	E
187	-2.513682	106.998464	2	30	49.26	S	106	59	54.47	E
188	-2.513654	107.016443	2	30	49.15	S	107	0	59.19	E
189	-2.51354	107.088359	2	30	48.74	S	107	5	18.09	E
190	-2.496896	105.77547	2	29	48.83	S	105	46	31.69	E
191	-2.496885	105.793458	2	29	48.79	S	105	47	36.45	E
192	-2.496874	105.811447	2	29	48.75	S	105	48	41.21	E
193	-2.496863	105.829436	2	29	48.71	S	105	49	45.97	E
194	-2.496815	105.901389	2	29	48.53	S	105	54	5.00	E
195	-2.496802	105.919377	2	29	48.49	S	105	55	9.76	E
196	-2.496229	106.530909	2	29	46.42	S	106	31	51.27	E
197	-2.496208	106.548893	2	29	46.35	S	106	32	56.01	E
198	-2.496121	106.620827	2	29	46.04	S	106	37	14.98	E
199	-2.496099	106.63881	2	29	45.96	S	106	38	19.72	E
200	-2.495861	106.818632	2	29	45.10	S	106	49	7.08	E
201	-2.495836	106.836614	2	29	45.01	S	106	50	11.81	E
202	-2.495785	106.872575	2	29	44.83	S	106	52	21.27	E
203	-2.495759	106.890556	2	29	44.73	S	106	53	26.00	E
204	-2.495733	106.908537	2	29	44.64	S	106	54	30.73	E
205	-2.495626	106.980457	2	29	44.25	S	106	58	49.65	E
206	-2.495599	106.998436	2	29	44.16	S	106	59	54.37	E
207	-2.495571	107.016416	2	29	44.06	S	107	0	59.10	E
208	-2.495458	107.088331	2	29	43.65	S	107	5	17.99	E
209	-2.478834	105.721493	2	28	43.80	S	105	43	17.37	E
210	-2.478824	105.739482	2	28	43.77	S	105	44	22.14	E
211	-2.478814	105.75747	2	28	43.73	S	105	45	26.89	E
212	-2.478803	105.775459	2	28	43.69	S	105	46	31.65	E
213	-2.478781	105.811436	2	28	43.61	S	105	48	41.17	E
214	-2.47877	105.829424	2	28	43.57	S	105	49	45.93	E
215	-2.478759	105.847413	2	28	43.53	S	105	50	50.69	E
216	-2.478747	105.865401	2	28	43.49	S	105	51	55.44	E
217	-2.478735	105.883389	2	28	43.45	S	105	53	0.20	E
218	-2.478183	106.494921	2	28	41.46	S	106	29	41.72	E
219	-2.478162	106.512904	2	28	41.38	S	106	30	46.45	E
220	-2.478012	106.638788	2	28	40.84	S	106	38	19.64	E
221	-2.477989	106.656771	2	28	40.76	S	106	39	24.38	E
222	-2.477944	106.692736	2	28	40.60	S	106	41	33.85	E
223	-2.477726	106.854569	2	28	39.81	S	106	51	16.45	E
224	-2.4777	106.87255	2	28	39.72	S	106	52	21.18	E
225	-2.477622	106.926491	2	28	39.44	S	106	55	35.37	E
226	-2.477515	106.998409	2	28	39.05	S	106	59	54.27	E
227	-2.477488	107.016388	2	28	38.96	S	107	0	59.00	E
228	-2.477376	107.088302	2	28	38.55	S	107	5	17.89	E
229	-2.460741	105.721483	2	27	38.67	S	105	43	17.34	E
230	-2.460731	105.739472	2	27	38.63	S	105	44	22.10	E
231	-2.460721	105.75746	2	27	38.60	S	105	45	26.86	E
232	-2.46071	105.775448	2	27	38.56	S	105	46	31.61	E
233	-2.4607	105.793437	2	27	38.52	S	105	47	36.37	E
234	-2.460689	105.811425	2	27	38.48	S	105	48	41.13	E
235	-2.460643	105.883377	2	27	38.31	S	105	53	0.16	E
236	-2.460212	106.386995	2	27	36.76	S	106	23	13.18	E
237	-2.460095	106.4949	2	27	36.34	S	106	29	41.64	E

CATATAN : BERLAKU MULAI 2 JUNI 2020 HINGGA 5 JUNI 2020

238	-2.460074	106.512884	2	27	36.27	S	106	30	46.38	E
239	-2.459903	106.656748	2	27	35.65	S	106	39	24.29	E
240	-2.45988	106.674731	2	27	35.57	S	106	40	29.03	E
241	-2.45959	106.890505	2	27	34.52	S	106	53	25.82	E
242	-2.459538	106.926465	2	27	34.34	S	106	55	35.27	E
243	-2.459459	106.980403	2	27	34.05	S	106	58	49.45	E
244	-2.459432	106.998382	2	27	33.96	S	106	59	54.18	E
245	-2.459405	107.016361	2	27	33.86	S	107	0	58.90	E
246	-2.45935	107.052318	2	27	33.66	S	107	3	8.34	E
247	-2.459322	107.070296	2	27	33.56	S	107	4	13.07	E
248	-2.459294	107.088274	2	27	33.46	S	107	5	17.79	E
249	-2.459265	107.106252	2	27	33.35	S	107	6	22.51	E
250	-2.459237	107.12423	2	27	33.25	S	107	7	27.23	E
251	-2.442618	105.775438	2	26	33.42	S	105	46	31.58	E
252	-2.442574	105.84739	2	26	33.27	S	105	50	50.60	E
253	-2.442563	105.865377	2	26	33.23	S	105	51	55.36	E
254	-2.442551	105.883365	2	26	33.18	S	105	53	0.11	E
255	-2.442142	106.368992	2	26	31.71	S	106	22	8.37	E
256	-2.442123	106.386976	2	26	31.64	S	106	23	13.11	E
257	-2.441794	106.674708	2	26	30.46	S	106	40	28.95	E
258	-2.441771	106.69269	2	26	30.38	S	106	41	33.68	E
259	-2.441506	106.890479	2	26	29.42	S	106	53	25.72	E
260	-2.44148	106.908459	2	26	29.33	S	106	54	30.45	E
261	-2.441454	106.926439	2	26	29.23	S	106	55	35.18	E
262	-2.441376	106.980376	2	26	28.95	S	106	58	49.35	E
263	-2.441349	106.998355	2	26	28.86	S	106	59	54.08	E
264	-2.441322	107.016334	2	26	28.76	S	107	0	58.80	E
265	-2.441295	107.034312	2	26	28.66	S	107	2	3.52	E
266	-2.441267	107.05229	2	26	28.56	S	107	3	8.24	E
267	-2.441211	107.088246	2	26	28.36	S	107	5	17.69	E
268	-2.424504	105.811403	2	25	28.21	S	105	48	41.05	E
269	-2.424493	105.829391	2	25	28.17	S	105	49	45.81	E
270	-2.424034	106.386958	2	25	26.52	S	106	23	13.05	E
271	-2.424015	106.404942	2	25	26.45	S	106	24	17.79	E
272	-2.423997	106.422926	2	25	26.39	S	106	25	22.53	E
273	-2.423685	106.692667	2	25	25.27	S	106	41	33.60	E
274	-2.423545	106.800554	2	25	24.76	S	106	48	1.99	E
275	-2.42352	106.818534	2	25	24.67	S	106	49	6.72	E
276	-2.423496	106.836515	2	25	24.59	S	106	50	11.45	E
277	-2.423471	106.854495	2	25	24.50	S	106	51	16.18	E
278	-2.423447	106.872475	2	25	24.41	S	106	52	20.91	E
279	-2.423292	106.98035	2	25	23.85	S	106	58	49.26	E
280	-2.423239	107.016307	2	25	23.66	S	107	0	58.71	E
281	-2.423185	107.052263	2	25	23.47	S	107	3	8.15	E
282	-2.423129	107.088218	2	25	23.26	S	107	5	17.58	E
283	-2.406411	105.811393	2	24	23.08	S	105	48	41.01	E
284	-2.405963	106.368955	2	24	21.47	S	106	22	8.24	E
285	-2.405945	106.386939	2	24	21.40	S	106	23	12.98	E
286	-2.405927	106.404923	2	24	21.34	S	106	24	17.72	E
287	-2.405908	106.422907	2	24	21.27	S	106	25	22.47	E
288	-2.405483	106.78255	2	24	19.74	S	106	46	57.18	E
289	-2.405459	106.80053	2	24	19.65	S	106	48	1.91	E
290	-2.405435	106.81851	2	24	19.57	S	106	49	6.64	E
291	-2.405411	106.83649	2	24	19.48	S	106	50	11.36	E
292	-2.405387	106.85447	2	24	19.39	S	106	51	16.09	E
293	-2.405362	106.87245	2	24	19.30	S	106	52	20.82	E
294	-2.405209	106.980324	2	24	18.75	S	106	58	49.17	E
295	-2.405156	107.01628	2	24	18.56	S	107	0	58.61	E
296	-2.388319	105.811382	2	23	17.95	S	105	48	40.98	E
297	-2.387856	106.386921	2	23	16.28	S	106	23	12.92	E
298	-2.387838	106.404905	2	23	16.22	S	106	24	17.66	E
299	-2.387421	106.764546	2	23	14.72	S	106	45	52.37	E
300	-2.387398	106.782526	2	23	14.63	S	106	46	57.09	E
301	-2.387374	106.800506	2	23	14.55	S	106	48	1.82	E
302	-2.387326	106.836466	2	23	14.37	S	106	50	11.28	E
303	-2.387302	106.854446	2	23	14.29	S	106	51	16.01	E
304	-2.387277	106.872425	2	23	14.20	S	106	52	20.73	E
305	-2.387151	106.962319	2	23	13.74	S	106	57	44.35	E

CATATAN : BERLAKU MULAI 2 JUNI 2020 HINGGA 5 JUNI 2020

306	-2.387125	106.980298	2	23	13.65	S	106	58	49.07	E
307	-2.387099	106.998276	2	23	13.56	S	106	59	53.79	E
308	-2.387073	107.016254	2	23	13.46	S	107	0	58.51	E
309	-2.370267	105.739423	2	22	12.96	S	105	44	21.92	E
310	-2.370257	105.75741	2	22	12.93	S	105	45	26.68	E
311	-2.370247	105.775397	2	22	12.89	S	105	46	31.43	E
312	-2.370237	105.793384	2	22	12.85	S	105	47	36.18	E
313	-2.369335	106.764523	2	22	9.61	S	106	45	52.28	E
314	-2.369312	106.782503	2	22	9.52	S	106	46	57.01	E
315	-2.369289	106.800483	2	22	9.44	S	106	48	1.74	E
316	-2.369241	106.836442	2	22	9.27	S	106	50	11.19	E
317	-2.369217	106.854422	2	22	9.18	S	106	51	15.92	E
318	-2.369193	106.872401	2	22	9.09	S	106	52	20.64	E
319	-2.369042	106.980272	2	22	8.55	S	106	58	48.98	E
320	-2.369016	106.99825	2	22	8.46	S	106	59	53.70	E
321	-2.36899	107.016227	2	22	8.36	S	107	0	58.42	E
322	-2.352174	105.739413	2	21	7.83	S	105	44	21.89	E
323	-2.352165	105.7574	2	21	7.79	S	105	45	26.64	E
324	-2.35125	106.7645	2	21	4.50	S	106	45	52.20	E
325	-2.351203	106.80046	2	21	4.33	S	106	48	1.66	E
326	-2.350933	106.998224	2	21	3.36	S	106	59	53.61	E
327	-2.350907	107.016201	2	21	3.27	S	107	0	58.32	E
328	-2.333708	106.260983	2	20	1.35	S	106	15	39.54	E
329	-2.333164	106.764477	2	19	59.39	S	106	45	52.12	E
330	-2.332999	106.890331	2	19	58.80	S	106	53	25.19	E
331	-2.332975	106.908309	2	19	58.71	S	106	54	29.91	E
332	-2.33295	106.926288	2	19	58.62	S	106	55	34.64	E
333	-2.332925	106.944266	2	19	58.53	S	106	56	39.36	E
334	-2.3329	106.962243	2	19	58.44	S	106	57	44.07	E
335	-2.315634	106.242983	2	18	56.28	S	106	14	34.74	E
336	-2.315101	106.746475	2	18	54.36	S	106	44	47.31	E
337	-2.315078	106.764455	2	18	54.28	S	106	45	52.04	E
338	-2.315056	106.782434	2	18	54.20	S	106	46	56.76	E
339	-2.315033	106.800414	2	18	54.12	S	106	48	1.49	E
340	-2.314939	106.872329	2	18	53.78	S	106	52	20.38	E
341	-2.314915	106.890307	2	18	53.69	S	106	53	25.11	E
342	-2.314891	106.908285	2	18	53.61	S	106	54	29.83	E
343	-2.314866	106.926263	2	18	53.52	S	106	55	34.55	E
344	-2.297544	106.242968	2	17	51.16	S	106	14	34.68	E
345	-2.297244	106.548669	2	17	50.08	S	106	32	55.21	E
346	-2.297015	106.746453	2	17	49.25	S	106	44	47.23	E
347	-2.296992	106.764433	2	17	49.17	S	106	45	51.96	E
348	-2.296854	106.872305	2	17	48.67	S	106	52	20.30	E
349	-2.296831	106.890283	2	17	48.59	S	106	53	25.02	E
350	-2.296807	106.908261	2	17	48.51	S	106	54	29.74	E
351	-2.296782	106.926239	2	17	48.42	S	106	55	34.46	E
352	-2.296758	106.944216	2	17	48.33	S	106	56	39.18	E
353	-2.279454	106.242952	2	16	46.03	S	106	14	34.63	E
354	-2.279137	106.566631	2	16	44.89	S	106	33	59.87	E
355	-2.279117	106.584612	2	16	44.82	S	106	35	4.60	E
356	-2.278907	106.764411	2	16	44.07	S	106	45	51.88	E
357	-2.278884	106.78239	2	16	43.98	S	106	46	56.60	E
358	-2.27877	106.872282	2	16	43.57	S	106	52	20.22	E
359	-2.278746	106.890259	2	16	43.49	S	106	53	24.93	E
360	-2.278698	106.926215	2	16	43.31	S	106	55	34.37	E
361	-2.278674	106.944192	2	16	43.23	S	106	56	39.09	E
362	-2.278649	106.962169	2	16	43.14	S	106	57	43.81	E
363	-2.261069	106.548631	2	15	39.85	S	106	32	55.07	E
364	-2.261049	106.566611	2	15	39.78	S	106	33	59.80	E
365	-2.26103	106.584592	2	15	39.71	S	106	35	4.53	E
366	-2.26101	106.602572	2	15	39.64	S	106	36	9.26	E
367	-2.260821	106.764389	2	15	38.96	S	106	45	51.80	E
368	-2.260799	106.782367	2	15	38.88	S	106	46	56.52	E
369	-2.260662	106.890236	2	15	38.38	S	106	53	24.85	E
370	-2.260614	106.926191	2	15	38.21	S	106	55	34.29	E
371	-2.260566	106.962145	2	15	38.04	S	106	57	43.72	E
372	-2.242981	106.548612	2	14	34.73	S	106	32	55.00	E
373	-2.242962	106.566592	2	14	34.66	S	106	33	59.73	E

CATATAN : BERLAKU MULAI 2 JUNI 2020 HINGGA 5 JUNI 2020

374	-2.242942	106.584572	2	14	34.59	S	106	35	4.46	E
375	-2.242923	106.602553	2	14	34.52	S	106	36	9.19	E
376	-2.242903	106.620533	2	14	34.45	S	106	37	13.92	E
377	-2.242713	106.782345	2	14	33.77	S	106	46	56.44	E
378	-2.242691	106.800324	2	14	33.69	S	106	48	1.17	E
379	-2.242577	106.890213	2	14	33.28	S	106	53	24.77	E
380	-2.24253	106.926167	2	14	33.11	S	106	55	34.20	E
381	-2.242506	106.944144	2	14	33.02	S	106	56	38.92	E
382	-2.242482	106.96212	2	14	32.94	S	106	57	43.63	E
383	-2.224855	106.584553	2	13	29.48	S	106	35	4.39	E
384	-2.224816	106.620513	2	13	29.34	S	106	37	13.85	E
385	-2.224796	106.638492	2	13	29.27	S	106	38	18.57	E
386	-2.224671	106.746367	2	13	28.82	S	106	44	46.92	E
387	-2.22465	106.764345	2	13	28.74	S	106	45	51.64	E
388	-2.224628	106.782324	2	13	28.66	S	106	46	56.37	E
389	-2.224606	106.800302	2	13	28.58	S	106	48	1.09	E
390	-2.224446	106.926143	2	13	28.01	S	106	55	34.11	E
391	-2.224398	106.962096	2	13	27.83	S	106	57	43.55	E
392	-2.206767	106.584534	2	12	24.36	S	106	35	4.32	E
393	-2.206748	106.602514	2	12	24.29	S	106	36	9.05	E
394	-2.206729	106.620493	2	12	24.22	S	106	37	13.77	E
395	-2.206709	106.638473	2	12	24.15	S	106	38	18.50	E
396	-2.206585	106.746346	2	12	23.71	S	106	44	46.85	E
397	-2.206521	106.80028	2	12	23.48	S	106	48	1.01	E
398	-2.206499	106.818258	2	12	23.40	S	106	49	5.73	E
399	-2.206408	106.890167	2	12	23.07	S	106	53	24.60	E
400	-2.206362	106.92612	2	12	22.90	S	106	55	34.03	E
401	-2.206315	106.962073	2	12	22.73	S	106	57	43.46	E
402	-2.206291	106.980049	2	12	22.65	S	106	58	48.18	E
403	-2.206267	106.998025	2	12	22.56	S	106	59	52.89	E
404	-2.188499	106.746325	2	11	18.60	S	106	44	46.77	E
405	-2.188435	106.800258	2	11	18.37	S	106	48	0.93	E
406	-2.188413	106.818236	2	11	18.29	S	106	49	5.65	E
407	-2.188391	106.836213	2	11	18.21	S	106	50	10.37	E
408	-2.188324	106.890144	2	11	17.97	S	106	53	24.52	E
409	-2.188301	106.90812	2	11	17.88	S	106	54	29.23	E
410	-2.188278	106.926097	2	11	17.80	S	106	55	33.95	E
411	-2.188183	106.998	2	11	17.46	S	106	59	52.80	E
412	-2.170392	106.764282	2	10	13.41	S	106	45	51.42	E
413	-2.17035	106.800237	2	10	13.26	S	106	48	0.85	E
414	-2.170284	106.854168	2	10	13.02	S	106	51	15.00	E
415	-2.17024	106.890121	2	10	12.86	S	106	53	24.44	E
416	-2.170194	106.926074	2	10	12.70	S	106	55	33.87	E
417	-2.170147	106.962026	2	10	12.53	S	106	57	43.29	E
418	-2.1701	106.997977	2	10	12.36	S	106	59	52.72	E
419	-2.170076	107.015952	2	10	12.27	S	107	0	57.43	E
420	-2.170052	107.033927	2	10	12.19	S	107	2	2.14	E