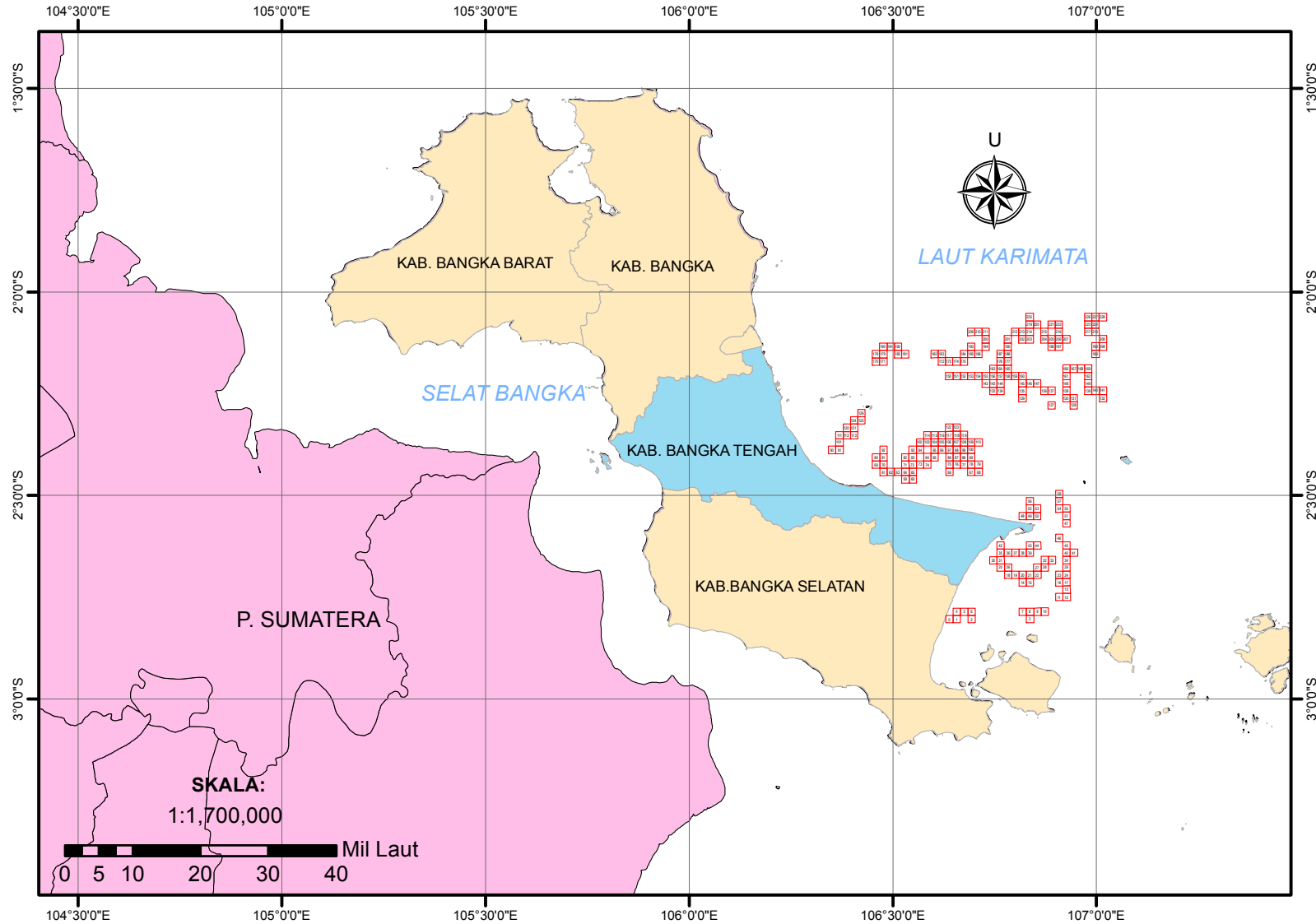
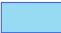
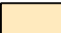




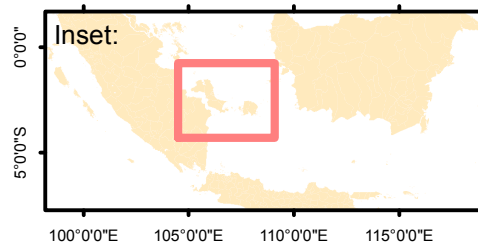


SISTEM INFORMASI DAERAH POTENSIAL PENANGKAPAN IKAN PERAIRAN KABUPATEN BANGKA TENGAH TANGGAL 5 JUNI 2020



Legenda:

-  Kab. Bangka Tengah
-  Prov. Bangka Belitung
-  P. Sumatera
-  Daerah Potensial Penangkapan Ikan



Dibuat oleh:
**Dinas Perikanan
Kabupaten Bangka Tengah**

- Sumber Data:
1. Data Ocean Color
 2. Data NCEP
 3. Peta RBI Dijital

CATATAN : BERLAKU MULAI 5 JUNI 2020 HINGGA 9 JUNI 2020

NO	Lat	Lon
	Dec	Dec
0	-2.803574	106.639215
1	-2.803549	106.657202
2	-2.803497	106.693176
3	-2.803279	106.837067
4	-2.785462	106.657177
5	-2.785436	106.675164
6	-2.785411	106.693151
7	-2.785222	106.819053
8	-2.785194	106.837039
9	-2.785166	106.855024
10	-2.785137	106.873009
11	-2.748911	106.90892
12	-2.748882	106.926904
13	-2.730798	106.926875
14	-2.712882	106.818944
15	-2.712855	106.836928
16	-2.712743	106.908863
17	-2.712714	106.926847
18	-2.69485	106.782948
19	-2.694824	106.800932
20	-2.694797	106.818917
21	-2.69477	106.836901
22	-2.694742	106.854885
23	-2.694658	106.908835
24	-2.69463	106.926818
25	-2.676791	106.764938
26	-2.676765	106.782922
27	-2.676658	106.854857
28	-2.67663	106.872841
29	-2.676546	106.92679
30	-2.658731	106.746928
31	-2.658705	106.764912
32	-2.658546	106.872813
33	-2.658518	106.890796
34	-2.658462	106.926762
35	-2.64062	106.764886
36	-2.640594	106.78287
37	-2.640568	106.800854
38	-2.640542	106.818837
39	-2.640515	106.83682
40	-2.640378	106.926734
41	-2.64035	106.944716
42	-2.622534	106.764861
43	-2.62243	106.836794
44	-2.622403	106.854777
45	-2.622294	106.926706
46	-2.604238	106.908697
47	-2.568042	106.926624
48	-2.550116	106.818708
49	-2.550091	106.83669
50	-2.550065	106.854671
51	-2.549958	106.926597
52	-2.532006	106.836664
53	-2.53198	106.854646
54	-2.531901	106.908589
55	-2.531874	106.92657
56	-2.513921	106.836639
57	-2.513817	106.908563
58	-2.495733	106.908537
59	-2.460054	106.530868
60	-2.460033	106.548851
61	-2.442027	106.476897
62	-2.442007	106.49488
63	-2.441987	106.512864
64	-2.441966	106.530847
65	-2.441945	106.54883
66	-2.441838	106.638744
67	-2.441771	106.69269
68	-2.441748	106.710672
69	-2.423958	106.458893
70	-2.423939	106.476877
71	-2.423878	106.530827
72	-2.423858	106.54881
73	-2.423837	106.566792
74	-2.423816	106.584775
75	-2.423751	106.638722
76	-2.423729	106.656704
77	-2.423707	106.674686
78	-2.423685	106.692667
79	-2.423662	106.710649

Latitude			
DD	MM	SS	Position
2	48	12.87	S
2	48	12.78	S
2	48	12.59	S
2	48	11.80	S
2	47	7.66	S
2	47	7.57	S
2	47	7.48	S
2	47	6.80	S
2	47	6.70	S
2	47	6.60	S
2	47	6.49	S
2	44	56.08	S
2	44	55.98	S
2	43	50.87	S
2	42	46.38	S
2	42	46.28	S
2	42	45.87	S
2	42	45.77	S
2	41	41.46	S
2	41	41.37	S
2	41	41.27	S
2	41	41.17	S
2	41	41.07	S
2	41	40.77	S
2	41	40.67	S
2	40	36.45	S
2	40	36.35	S
2	40	35.97	S
2	40	35.87	S
2	40	35.57	S
2	39	31.43	S
2	39	31.34	S
2	39	30.77	S
2	39	30.66	S
2	39	30.46	S
2	38	26.23	S
2	38	26.14	S
2	38	26.04	S
2	38	25.95	S
2	38	25.85	S
2	38	25.36	S
2	38	25.26	S
2	37	21.12	S
2	37	20.75	S
2	37	20.65	S
2	37	20.26	S
2	36	15.26	S
2	34	4.95	S
2	33	0.42	S
2	33	0.33	S
2	33	0.23	S
2	32	59.85	S
2	31	55.22	S
2	31	55.13	S
2	31	54.84	S
2	31	54.75	S
2	30	50.12	S
2	30	49.74	S
2	29	44.64	S
2	27	36.19	S
2	27	36.12	S
2	26	31.30	S
2	26	31.23	S
2	26	31.15	S
2	26	31.08	S
2	26	31.00	S
2	26	30.62	S
2	26	30.38	S
2	26	30.29	S
2	25	26.25	S
2	25	26.18	S
2	25	25.96	S
2	25	25.89	S
2	25	25.81	S
2	25	25.74	S
2	25	25.50	S
2	25	25.42	S
2	25	25.35	S
2	25	25.27	S
2	25	25.18	S

Longitude			
DD	MM	SS	Position
106	38	21.17	E
106	39	25.93	E
106	41	35.43	E
106	50	13.44	E
106	39	25.84	E
106	40	30.59	E
106	41	35.34	E
106	49	8.59	E
106	50	13.34	E
106	51	18.09	E
106	52	22.83	E
106	54	32.11	E
106	55	36.85	E
106	55	36.75	E
106	49	8.20	E
106	50	12.94	E
106	54	31.91	E
106	55	36.65	E
106	46	58.61	E
106	48	3.36	E
106	49	8.10	E
106	50	12.84	E
106	51	17.59	E
106	54	31.81	E
106	55	36.54	E
106	45	53.78	E
106	46	58.52	E
106	51	17.49	E
106	52	22.23	E
106	55	36.44	E
106	44	48.94	E
106	45	53.68	E
106	52	22.13	E
106	53	26.87	E
106	55	36.34	E
106	45	53.59	E
106	46	58.33	E
106	48	3.07	E
106	49	7.81	E
106	50	12.55	E
106	55	36.24	E
106	56	40.98	E
106	45	53.50	E
106	50	12.46	E
106	51	17.20	E
106	55	36.14	E
106	54	31.31	E
106	55	35.85	E
106	49	7.35	E
106	50	12.08	E
106	51	16.82	E
106	55	35.75	E
106	50	11.99	E
106	51	16.73	E
106	54	30.92	E
106	55	35.65	E
106	50	11.90	E
106	54	30.83	E
106	54	30.73	E
106	31	51.12	E
106	32	55.86	E
106	28	36.83	E
106	29	41.57	E
106	30	46.31	E
106	31	51.05	E
106	32	55.79	E
106	38	19.48	E
106	41	33.68	E
106	42	38.42	E
106	27	32.01	E
106	28	36.76	E
106	31	50.98	E
106	32	55.72	E
106	34	0.45	E
106	35	5.19	E
106	38	19.40	E
106	39	24.13	E
106	40	28.87	E
106	41	33.60	E
106	42	38.34	E

CATATAN : BERLAKU MULAI 5 JUNI 2020 HINGGA 9 JUNI 2020

80	-2.40587	106.458874	2	24	21.13	S	106	27	31.95	E
81	-2.40585	106.476857	2	24	21.06	S	106	28	36.69	E
82	-2.40579	106.530806	2	24	20.84	S	106	31	50.90	E
83	-2.40577	106.548789	2	24	20.77	S	106	32	55.64	E
84	-2.405729	106.584754	2	24	20.62	S	106	35	5.11	E
85	-2.405707	106.602736	2	24	20.55	S	106	36	9.85	E
86	-2.405664	106.6387	2	24	20.39	S	106	38	19.32	E
87	-2.405643	106.656682	2	24	20.31	S	106	39	24.06	E
88	-2.405621	106.674664	2	24	20.24	S	106	40	28.79	E
89	-2.405598	106.692645	2	24	20.15	S	106	41	33.52	E
90	-2.387892	106.350954	2	23	16.41	S	106	21	3.43	E
91	-2.387874	106.368937	2	23	16.35	S	106	22	8.17	E
92	-2.387762	106.476838	2	23	15.94	S	106	28	36.62	E
93	-2.387682	106.548769	2	23	15.66	S	106	32	55.57	E
94	-2.387662	106.566751	2	23	15.58	S	106	34	0.30	E
95	-2.38762	106.602715	2	23	15.43	S	106	36	9.77	E
96	-2.387599	106.620697	2	23	15.36	S	106	37	14.51	E
97	-2.387578	106.638679	2	23	15.28	S	106	38	19.24	E
98	-2.387556	106.65666	2	23	15.20	S	106	39	23.98	E
99	-2.387534	106.674642	2	23	15.12	S	106	40	28.71	E
100	-2.387512	106.692623	2	23	15.04	S	106	41	33.44	E
101	-2.369785	106.36892	2	22	11.23	S	106	22	8.11	E
102	-2.369574	106.566731	2	22	10.47	S	106	34	0.23	E
103	-2.369554	106.584713	2	22	10.39	S	106	35	4.97	E
104	-2.369533	106.602694	2	22	10.32	S	106	36	9.70	E
105	-2.369512	106.620676	2	22	10.24	S	106	37	14.43	E
106	-2.369491	106.638657	2	22	10.17	S	106	38	19.17	E
107	-2.369469	106.656639	2	22	10.09	S	106	39	23.90	E
108	-2.369447	106.67462	2	22	10.01	S	106	40	28.63	E
109	-2.369425	106.692601	2	22	9.93	S	106	41	33.36	E
110	-2.369403	106.710582	2	22	9.85	S	106	42	38.10	E
111	-2.351696	106.368902	2	21	6.11	S	106	22	8.05	E
112	-2.351678	106.386885	2	21	6.04	S	106	23	12.79	E
113	-2.35166	106.404868	2	21	5.98	S	106	24	17.52	E
114	-2.351466	106.584692	2	21	5.28	S	106	35	4.89	E
115	-2.351446	106.602674	2	21	5.21	S	106	36	9.63	E
116	-2.351425	106.620655	2	21	5.13	S	106	37	14.36	E
117	-2.351404	106.638636	2	21	5.05	S	106	38	19.09	E
118	-2.351382	106.656617	2	21	4.98	S	106	39	23.82	E
119	-2.351361	106.674598	2	21	4.90	S	106	40	28.55	E
120	-2.333589	106.386867	2	20	0.92	S	106	23	12.72	E
121	-2.333571	106.40485	2	20	0.86	S	106	24	17.46	E
122	-2.333317	106.638615	2	19	59.94	S	106	38	19.01	E
123	-2.333296	106.656596	2	19	59.87	S	106	39	23.75	E
124	-2.315482	106.404832	2	18	55.74	S	106	24	17.40	E
125	-2.315464	106.422815	2	18	55.67	S	106	25	22.13	E
126	-2.297376	106.422797	2	17	50.55	S	106	25	22.07	E
127	-2.278746	106.890259	2	16	43.49	S	106	53	24.93	E
128	-2.278674	106.944192	2	16	43.23	S	106	56	39.09	E
129	-2.260754	106.818324	2	15	38.71	S	106	49	5.97	E
130	-2.260614	106.926191	2	15	38.21	S	106	55	34.29	E
131	-2.26059	106.944168	2	15	38.12	S	106	56	39.00	E
132	-2.260491	107.016074	2	15	37.77	S	107	0	57.87	E
133	-2.242757	106.746388	2	14	33.93	S	106	44	47.00	E
134	-2.242735	106.764367	2	14	33.85	S	106	45	51.72	E
135	-2.242669	106.818302	2	14	33.61	S	106	49	5.89	E
136	-2.242601	106.872235	2	14	33.36	S	106	52	20.05	E
137	-2.242577	106.890213	2	14	33.28	S	106	53	24.77	E
138	-2.24253	106.926167	2	14	33.11	S	106	55	34.20	E
139	-2.242458	106.980097	2	14	32.85	S	106	58	48.35	E
140	-2.242433	106.998073	2	14	32.76	S	106	59	53.06	E
141	-2.242408	107.016049	2	14	32.67	S	107	0	57.78	E
142	-2.224692	106.728388	2	13	28.89	S	106	43	42.20	E
143	-2.224671	106.746367	2	13	28.82	S	106	44	46.92	E
144	-2.22465	106.764345	2	13	28.74	S	106	45	51.64	E
145	-2.224584	106.81828	2	13	28.50	S	106	49	5.81	E
146	-2.224561	106.836257	2	13	28.42	S	106	50	10.53	E
147	-2.224539	106.854235	2	13	28.34	S	106	51	15.25	E
148	-2.224446	106.926143	2	13	28.01	S	106	55	34.11	E
149	-2.224374	106.980073	2	13	27.75	S	106	58	48.26	E
150	-2.206709	106.638473	2	12	24.15	S	106	38	18.50	E
151	-2.206689	106.656452	2	12	24.08	S	106	39	23.23	E
152	-2.206668	106.674431	2	12	24.00	S	106	40	27.95	E
153	-2.206648	106.69241	2	12	23.93	S	106	41	32.68	E
154	-2.206627	106.710389	2	12	23.86	S	106	42	37.40	E
155	-2.206606	106.728367	2	12	23.78	S	106	43	42.12	E
156	-2.206585	106.746346	2	12	23.71	S	106	44	46.85	E
157	-2.206564	106.764324	2	12	23.63	S	106	45	51.57	E
158	-2.206542	106.782302	2	12	23.55	S	106	46	56.29	E
159	-2.206521	106.80028	2	12	23.48	S	106	48	1.01	E
160	-2.206499	106.818258	2	12	23.40	S	106	49	5.73	E
161	-2.206362	106.92612	2	12	22.90	S	106	55	34.03	E
162	-2.206291	106.980049	2	12	22.65	S	106	58	48.18	E

CATATAN : BERLAKU MULAI 5 JUNI 2020 HINGGA 9 JUNI 2020

163	-2.188499	106.746325	2	11	18.60	S	106	44	46.77	E
164	-2.188478	106.764303	2	11	18.52	S	106	45	51.49	E
165	-2.188457	106.782281	2	11	18.45	S	106	46	56.21	E
166	-2.188278	106.926097	2	11	17.80	S	106	55	33.95	E
167	-2.188255	106.944073	2	11	17.72	S	106	56	38.66	E
168	-2.188231	106.962049	2	11	17.63	S	106	57	43.38	E
169	-2.188207	106.980025	2	11	17.55	S	106	58	48.09	E
170	-2.17072	106.458636	2	10	14.59	S	106	27	31.09	E
171	-2.170703	106.476617	2	10	14.53	S	106	28	35.82	E
172	-2.170554	106.620454	2	10	13.99	S	106	37	13.63	E
173	-2.170535	106.638433	2	10	13.93	S	106	38	18.36	E
174	-2.170515	106.656412	2	10	13.85	S	106	39	23.08	E
175	-2.170495	106.674391	2	10	13.78	S	106	40	27.81	E
176	-2.170392	106.764282	2	10	13.41	S	106	45	51.42	E
177	-2.170371	106.782259	2	10	13.34	S	106	46	56.13	E
178	-2.152632	106.458619	2	9	9.48	S	106	27	31.03	E
179	-2.152614	106.476599	2	9	9.41	S	106	28	35.76	E
180	-2.152579	106.512559	2	9	9.28	S	106	30	45.21	E
181	-2.152561	106.530539	2	9	9.22	S	106	31	49.94	E
182	-2.152486	106.602456	2	9	8.95	S	106	36	8.84	E
183	-2.152467	106.620435	2	9	8.88	S	106	37	13.57	E
184	-2.152409	106.674371	2	9	8.67	S	106	40	27.74	E
185	-2.152389	106.692349	2	9	8.60	S	106	41	32.46	E
186	-2.152369	106.710327	2	9	8.53	S	106	42	37.18	E
187	-2.152307	106.764261	2	9	8.31	S	106	45	51.34	E
188	-2.152286	106.782238	2	9	8.23	S	106	46	56.06	E
189	-2.152017	106.997953	2	9	7.26	S	106	59	52.63	E
190	-2.134526	106.476582	2	8	4.29	S	106	28	35.70	E
191	-2.134508	106.494562	2	8	4.23	S	106	29	40.42	E
192	-2.134491	106.512541	2	8	4.17	S	106	30	45.15	E
193	-2.134302	106.692329	2	8	3.49	S	106	41	32.38	E
194	-2.134262	106.728285	2	8	3.34	S	106	43	41.83	E
195	-2.1342	106.782217	2	8	3.12	S	106	46	55.98	E
196	-2.134071	106.890077	2	8	2.66	S	106	53	24.28	E
197	-2.134048	106.908053	2	8	2.57	S	106	54	28.99	E
198	-2.133933	106.99793	2	8	2.16	S	106	59	52.55	E
199	-2.13391	107.015904	2	8	2.08	S	107	0	57.25	E
200	-2.116176	106.728265	2	6	58.23	S	106	43	41.75	E
201	-2.116115	106.782196	2	6	58.01	S	106	46	55.91	E
202	-2.116073	106.81815	2	6	57.86	S	106	49	5.34	E
203	-2.116051	106.836126	2	6	57.78	S	106	50	10.05	E
204	-2.116008	106.872079	2	6	57.63	S	106	52	19.48	E
205	-2.115986	106.890055	2	6	57.55	S	106	53	24.20	E
206	-2.115964	106.90803	2	6	57.47	S	106	54	28.91	E
207	-2.115942	106.926006	2	6	57.39	S	106	55	33.62	E
208	-2.115827	107.015881	2	6	56.98	S	107	0	57.17	E
209	-2.098129	106.69229	2	5	53.26	S	106	41	32.24	E
210	-2.09811	106.710268	2	5	53.20	S	106	42	36.96	E
211	-2.09809	106.728245	2	5	53.12	S	106	43	41.68	E
212	-2.098008	106.800153	2	5	52.83	S	106	48	0.55	E
213	-2.097987	106.818129	2	5	52.75	S	106	49	5.26	E
214	-2.097966	106.836105	2	5	52.68	S	106	50	9.98	E
215	-2.097923	106.872057	2	5	52.52	S	106	52	19.41	E
216	-2.09788	106.908008	2	5	52.37	S	106	54	28.83	E
217	-2.09779	106.979909	2	5	52.04	S	106	58	47.67	E
218	-2.097767	106.997883	2	5	51.96	S	106	59	52.38	E
219	-2.079881	106.836084	2	4	47.57	S	106	50	9.90	E
220	-2.07986	106.85406	2	4	47.50	S	106	51	14.62	E
221	-2.079817	106.890011	2	4	47.34	S	106	53	24.04	E
222	-2.079795	106.907987	2	4	47.26	S	106	54	28.75	E
223	-2.079706	106.979886	2	4	46.94	S	106	58	47.59	E
224	-2.079684	106.99786	2	4	46.86	S	106	59	52.30	E
225	-2.061796	106.836063	2	3	42.47	S	106	50	9.83	E
226	-2.061623	106.979864	2	3	41.84	S	106	58	47.51	E
227	-2.0616	106.997838	2	3	41.76	S	106	59	52.22	E
228	-2.061577	107.015812	2	3	41.68	S	107	0	56.92	E