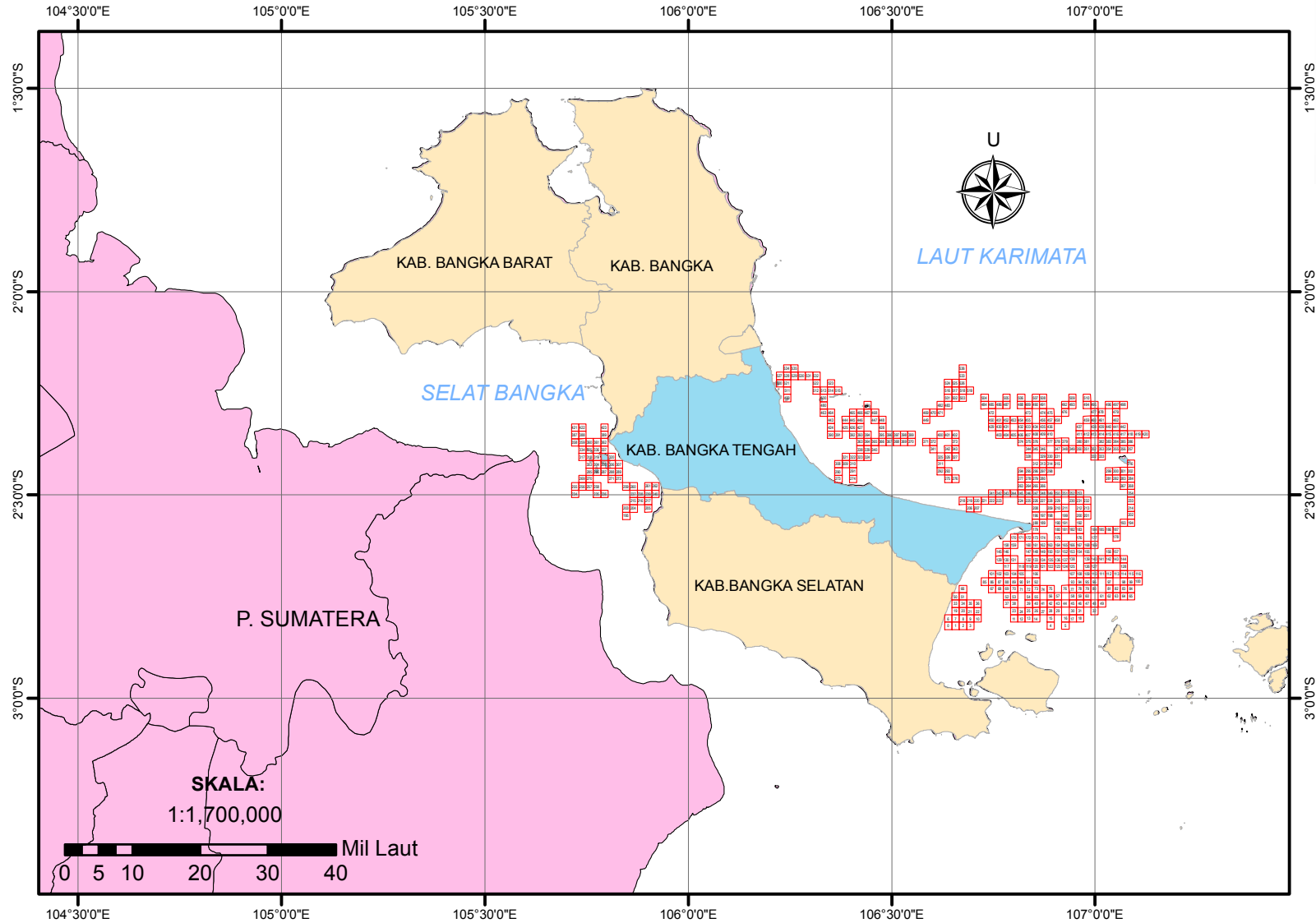
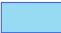
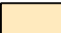




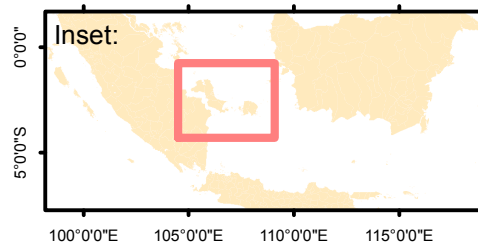


SISTEM INFORMASI DAERAH POTENSIAL PENANGKAPAN IKAN PERAIRAN KABUPATEN BANGKA TENGAH TANGGAL 7 JULI 2020



Legenda:

-  Kab. Bangka Tengah
-  Prov. Bangka Belitung
-  P. Sumatera
-  Daerah Potensial Penangkapan Ikan



Dibuat oleh:
**Dinas Perikanan
Kabupaten Bangka Tengah**

- Sumber Data:
1. Data Ocean Color
 2. Data NCEP
 3. Peta RBI Dijital

CATATAN : BERLAKU MULAI 7 JULI 2020 HINGGA 10 JULI 2020

NO	Lat	Lon
	Dec	Dec
0	-2.821661	106.63924
1	-2.821635	106.657228
2	-2.821609	106.675215
3	-2.821583	106.693203
4	-2.821277	106.891052
5	-2.821217	106.927022
6	-2.803574	106.639215
7	-2.803549	106.657202
8	-2.803523	106.675189
9	-2.803497	106.693176
10	-2.803471	106.711163
11	-2.803335	106.801095
12	-2.803307	106.819081
13	-2.803279	106.837067
14	-2.80325	106.855052
15	-2.803192	106.891023
16	-2.803133	106.926992
17	-2.803104	106.944977
18	-2.803073	106.962961
19	-2.785462	106.657177
20	-2.785436	106.675164
21	-2.785411	106.693151
22	-2.785384	106.711137
23	-2.78525	106.801068
24	-2.785222	106.819053
25	-2.785194	106.837039
26	-2.785166	106.855024
27	-2.785137	106.873009
28	-2.785108	106.890994
29	-2.785079	106.908978
30	-2.78502	106.944947
31	-2.78499	106.962931
32	-2.784929	106.998899
33	-2.767375	106.657152
34	-2.76735	106.675138
35	-2.767324	106.693125
36	-2.767298	106.711111
37	-2.767192	106.783055
38	-2.767165	106.80104
39	-2.767109	106.837011
40	-2.767081	106.854996
41	-2.767053	106.87298
42	-2.767024	106.890965
43	-2.766995	106.908949
44	-2.766966	106.926933
45	-2.766936	106.944917
46	-2.766906	106.962901
47	-2.766876	106.980885
48	-2.766846	106.998868
49	-2.766815	107.016851
50	-2.749289	106.657127
51	-2.749264	106.675113
52	-2.749166	106.783028
53	-2.749079	106.801013
54	-2.749024	106.836983
55	-2.748996	106.854968
56	-2.74894	106.890936
57	-2.748911	106.90892
58	-2.748852	106.944888
59	-2.748823	106.962872
60	-2.748793	106.980855
61	-2.748732	107.016821
62	-2.748702	107.034804
63	-2.748671	107.052786
64	-2.74864	107.070769
65	-2.748608	107.088751
66	-2.731177	106.675088
67	-2.731074	106.747031
68	-2.731048	106.765016
69	-2.731021	106.783001
70	-2.730994	106.800986
71	-2.730967	106.818971
72	-2.730939	106.836955
73	-2.730912	106.85494
74	-2.730884	106.872924
75	-2.730855	106.890908
76	-2.730798	106.926875
77	-2.730769	106.944859
78	-2.730739	106.962842
79	-2.73071	106.980825
80	-2.73068	106.998808
81	-2.730619	107.034773
82	-2.730588	107.052755
83	-2.730557	107.070738
84	-2.730526	107.088719
85	-2.713014	106.729019
86	-2.712988	106.747005

Latitude			
DD	MM	SS	Position
2	49	17.98	S
2	49	17.89	S
2	49	17.79	S
2	49	17.70	S
2	49	16.60	S
2	49	16.38	S
2	48	12.87	S
2	48	12.78	S
2	48	12.68	S
2	48	12.59	S
2	48	12.50	S
2	48	12.01	S
2	48	11.91	S
2	48	11.80	S
2	48	11.70	S
2	48	11.49	S
2	48	11.28	S
2	48	11.17	S
2	48	11.06	S
2	47	7.66	S
2	47	7.57	S
2	47	7.48	S
2	47	7.38	S
2	47	6.90	S
2	47	6.80	S
2	47	6.70	S
2	47	6.60	S
2	47	6.49	S
2	47	6.39	S
2	47	6.28	S
2	47	6.07	S
2	47	5.96	S
2	47	5.74	S
2	46	2.55	S
2	46	2.46	S
2	46	2.37	S
2	46	2.27	S
2	46	1.89	S
2	46	1.79	S
2	46	1.59	S
2	46	1.49	S
2	46	1.39	S
2	46	1.29	S
2	46	1.18	S
2	46	1.08	S
2	46	0.97	S
2	46	0.86	S
2	46	0.75	S
2	46	0.65	S
2	46	0.53	S
2	44	57.44	S
2	44	57.35	S
2	44	56.78	S
2	44	56.68	S
2	44	56.49	S
2	44	56.39	S
2	44	56.18	S
2	44	56.08	S
2	44	55.87	S
2	44	55.76	S
2	44	55.65	S
2	44	55.44	S
2	44	55.33	S
2	44	55.22	S
2	44	55.10	S
2	44	54.99	S
2	43	52.24	S
2	43	51.87	S
2	43	51.77	S
2	43	51.68	S
2	43	51.58	S
2	43	51.48	S
2	43	51.38	S
2	43	51.28	S
2	43	51.18	S
2	43	51.08	S
2	43	50.87	S
2	43	50.77	S
2	43	50.66	S
2	43	50.56	S
2	43	50.45	S
2	43	50.23	S
2	43	50.12	S
2	43	50.01	S
2	43	49.89	S
2	42	46.85	S
2	42	46.76	S

Longitude			
DD	MM	SS	Position
106	38	21.26	E
106	39	26.02	E
106	40	30.77	E
106	41	35.53	E
106	53	27.79	E
106	55	37.28	E
106	38	21.17	E
106	39	25.93	E
106	40	30.68	E
106	41	35.43	E
106	42	40.19	E
106	48	3.94	E
106	49	8.69	E
106	50	13.44	E
106	51	18.19	E
106	53	27.68	E
106	55	37.17	E
106	56	41.92	E
106	57	46.66	E
106	39	25.84	E
106	40	30.59	E
106	41	35.34	E
106	42	40.09	E
106	48	3.84	E
106	49	8.59	E
106	50	13.34	E
106	51	18.09	E
106	52	22.83	E
106	53	27.58	E
106	54	32.32	E
106	56	41.81	E
106	57	46.55	E
106	59	56.04	E
106	39	25.75	E
106	40	30.50	E
106	41	35.25	E
106	42	40.00	E
106	46	59.00	E
106	48	3.74	E
106	50	13.24	E
106	51	17.99	E
106	52	22.73	E
106	53	27.47	E
106	54	32.22	E
106	55	36.96	E
106	56	41.70	E
106	57	46.44	E
106	58	51.19	E
106	59	55.92	E
107	1	0.66	E
106	39	25.66	E
106	40	30.41	E
106	46	58.90	E
106	48	3.65	E
106	50	13.14	E
106	51	17.88	E
106	53	27.37	E
106	54	32.11	E
106	56	41.60	E
106	57	46.34	E
106	58	51.08	E
107	1	0.56	E
107	2	5.29	E
107	3	10.03	E
107	4	14.77	E
107	5	19.50	E
106	40	30.32	E
106	44	49.31	E
106	45	54.06	E
106	46	58.80	E
106	48	3.55	E
106	49	8.30	E
106	50	13.04	E
106	51	17.78	E
106	52	22.53	E
106	53	27.27	E
106	55	36.75	E
106	56	41.49	E
106	57	46.23	E
106	58	50.97	E
106	59	55.71	E
107	2	5.18	E
107	3	9.92	E
107	4	14.66	E
107	5	19.39	E
106	43	44.47	E
106	44	49.22	E

CATATAN : BERLAKU MULAI 7 JULI 2020 HINGGA 10 JULI 2020

87	-2.712962	106.76499	2	42	46.66	S	106	45	53.96	E
88	-2.712936	106.782974	2	42	46.57	S	106	46	58.71	E
89	-2.712909	106.800959	2	42	46.47	S	106	48	3.45	E
90	-2.712882	106.818944	2	42	46.38	S	106	49	8.20	E
91	-2.712855	106.836928	2	42	46.28	S	106	50	12.94	E
92	-2.712827	106.854912	2	42	46.18	S	106	51	17.68	E
93	-2.712685	106.94483	2	42	45.67	S	106	56	41.39	E
94	-2.712656	106.962813	2	42	45.56	S	106	57	46.13	E
95	-2.712626	106.980796	2	42	45.45	S	106	58	50.87	E
96	-2.712597	106.998778	2	42	45.35	S	106	59	55.60	E
97	-2.712536	107.034743	2	42	45.13	S	107	2	5.07	E
98	-2.712475	107.070707	2	42	44.91	S	107	4	14.55	E
99	-2.712444	107.088688	2	42	44.80	S	107	5	19.28	E
100	-2.712413	107.106667	2	42	44.69	S	107	6	24.01	E
101	-2.694903	106.746979	2	41	41.65	S	106	44	49.12	E
102	-2.694877	106.764963	2	41	41.56	S	106	45	53.87	E
103	-2.69485	106.782948	2	41	41.46	S	106	46	58.61	E
104	-2.694824	106.800932	2	41	41.37	S	106	48	3.36	E
105	-2.694797	106.818917	2	41	41.27	S	106	49	8.10	E
106	-2.694742	106.854885	2	41	41.07	S	106	51	17.59	E
107	-2.694601	106.944801	2	41	40.56	S	106	56	41.28	E
108	-2.694572	106.962784	2	41	40.46	S	106	57	46.02	E
109	-2.694543	106.980766	2	41	40.35	S	106	58	50.76	E
110	-2.694513	106.998749	2	41	40.25	S	106	59	55.50	E
111	-2.694484	107.016731	2	41	40.14	S	107	1	0.23	E
112	-2.694454	107.034713	2	41	40.03	S	107	2	4.97	E
113	-2.694423	107.052694	2	41	39.92	S	107	3	9.70	E
114	-2.694393	107.070676	2	41	39.81	S	107	4	14.43	E
115	-2.694362	107.088657	2	41	39.70	S	107	5	19.17	E
116	-2.694331	107.106638	2	41	39.59	S	107	6	23.90	E
117	-2.676765	106.782922	2	40	36.35	S	106	46	58.52	E
118	-2.676712	106.81889	2	40	36.16	S	106	49	8.00	E
119	-2.676685	106.836874	2	40	36.07	S	106	50	12.75	E
120	-2.676658	106.854857	2	40	35.97	S	106	51	17.49	E
121	-2.67663	106.872841	2	40	35.87	S	106	52	22.23	E
122	-2.676602	106.890824	2	40	35.77	S	106	53	26.97	E
123	-2.676574	106.908807	2	40	35.67	S	106	54	31.71	E
124	-2.676546	106.92679	2	40	35.57	S	106	55	36.44	E
125	-2.676518	106.944772	2	40	35.46	S	106	56	41.18	E
126	-2.67646	106.980737	2	40	35.26	S	106	58	50.65	E
127	-2.67643	106.998719	2	40	35.15	S	106	59	55.39	E
128	-2.67631	107.070646	2	40	34.72	S	107	4	14.33	E
129	-2.658705	106.764912	2	39	31.34	S	106	45	53.68	E
130	-2.658679	106.782896	2	39	31.24	S	106	46	58.43	E
131	-2.658653	106.80088	2	39	31.15	S	106	48	3.17	E
132	-2.6586	106.836847	2	39	30.96	S	106	50	12.65	E
133	-2.658573	106.85483	2	39	30.86	S	106	51	17.39	E
134	-2.658546	106.872813	2	39	30.77	S	106	52	22.13	E
135	-2.658518	106.890796	2	39	30.66	S	106	53	26.87	E
136	-2.65849	106.908779	2	39	30.56	S	106	54	31.60	E
137	-2.658462	106.926762	2	39	30.46	S	106	55	36.34	E
138	-2.658434	106.944744	2	39	30.36	S	106	56	41.08	E
139	-2.658376	106.980708	2	39	30.15	S	106	58	50.55	E
140	-2.658347	106.99869	2	39	30.05	S	106	59	55.28	E
141	-2.658318	107.016672	2	39	29.94	S	107	1	0.02	E
142	-2.658288	107.034653	2	39	29.84	S	107	2	4.75	E
143	-2.658258	107.052634	2	39	29.73	S	107	3	9.48	E
144	-2.658228	107.070615	2	39	29.62	S	107	4	14.21	E
145	-2.64062	106.764886	2	38	26.23	S	106	45	53.59	E
146	-2.640594	106.78287	2	38	26.14	S	106	46	58.33	E
147	-2.640515	106.83682	2	38	25.85	S	106	50	12.55	E
148	-2.640488	106.854803	2	38	25.76	S	106	51	17.29	E
149	-2.640461	106.872786	2	38	25.66	S	106	52	22.03	E
150	-2.640434	106.890769	2	38	25.56	S	106	53	26.77	E
151	-2.640406	106.908751	2	38	25.46	S	106	54	31.50	E
152	-2.640378	106.926734	2	38	25.36	S	106	55	36.24	E
153	-2.64035	106.944716	2	38	25.26	S	106	56	40.98	E
154	-2.640322	106.962698	2	38	25.16	S	106	57	45.71	E
155	-2.640293	106.98068	2	38	25.05	S	106	58	50.45	E
156	-2.640205	107.034624	2	38	24.74	S	107	2	4.65	E
157	-2.640176	107.052605	2	38	24.63	S	107	3	9.38	E
158	-2.622509	106.782844	2	37	21.03	S	106	46	58.24	E
159	-2.622483	106.800828	2	37	20.94	S	106	48	2.98	E
160	-2.62243	106.836794	2	37	20.75	S	106	50	12.46	E
161	-2.622403	106.854777	2	37	20.65	S	106	51	17.20	E
162	-2.622377	106.872759	2	37	20.56	S	106	52	21.93	E
163	-2.622349	106.890742	2	37	20.46	S	106	53	26.67	E
164	-2.622322	106.908724	2	37	20.36	S	106	54	31.41	E
165	-2.622294	106.926706	2	37	20.26	S	106	55	36.14	E
166	-2.622266	106.944688	2	37	20.16	S	106	56	40.88	E

167	-2.622238	106.962669	2	37	20.06	S	106	57	45.61	E
168	-2.62221	106.980651	2	37	19.96	S	106	58	50.34	E
169	-2.622181	106.998632	2	37	19.85	S	106	59	55.08	E
170	-2.604397	106.800802	2	36	15.83	S	106	48	2.89	E
171	-2.604371	106.818785	2	36	15.74	S	106	49	7.63	E
172	-2.604345	106.836767	2	36	15.64	S	106	50	12.36	E
173	-2.604319	106.85475	2	36	15.55	S	106	51	17.10	E
174	-2.604292	106.872732	2	36	15.45	S	106	52	21.84	E
175	-2.604238	106.908697	2	36	15.26	S	106	54	31.31	E
176	-2.604154	106.962641	2	36	14.95	S	106	57	45.51	E
177	-2.604098	106.998604	2	36	14.75	S	106	59	54.97	E
178	-2.60401	107.052546	2	36	14.44	S	107	3	9.17	E
179	-2.586234	106.854724	2	35	10.44	S	106	51	17.01	E
180	-2.586154	106.908669	2	35	10.15	S	106	54	31.21	E
181	-2.586126	106.926651	2	35	10.05	S	106	55	35.94	E
182	-2.586099	106.944632	2	35	9.96	S	106	56	40.68	E
183	-2.586071	106.962614	2	35	9.86	S	106	57	45.41	E
184	-2.586014	106.998575	2	35	9.65	S	106	59	54.87	E
185	-2.585986	107.016556	2	35	9.55	S	107	0	59.60	E
186	-2.585957	107.034536	2	35	9.45	S	107	2	4.33	E
187	-2.585928	107.052516	2	35	9.34	S	107	3	9.06	E
188	-2.568149	106.854697	2	34	5.34	S	106	51	16.91	E
189	-2.568123	106.872679	2	34	5.24	S	106	52	21.64	E
190	-2.568069	106.908642	2	34	5.05	S	106	54	31.11	E
191	-2.568042	106.926624	2	34	4.95	S	106	55	35.85	E
192	-2.567987	106.962586	2	34	4.75	S	106	57	45.31	E
193	-2.567816	107.070467	2	34	4.14	S	107	4	13.68	E
194	-2.567787	107.088447	2	34	4.03	S	107	5	18.41	E
195	-2.551128	105.847459	2	33	4.06	S	105	50	50.85	E
196	-2.550065	106.854671	2	33	0.23	S	106	51	16.82	E
197	-2.550038	106.872653	2	33	0.14	S	106	52	21.55	E
198	-2.550012	106.890634	2	33	0.04	S	106	53	26.28	E
199	-2.549958	106.926597	2	32	59.85	S	106	55	35.75	E
200	-2.549904	106.962558	2	32	59.65	S	106	57	45.21	E
201	-2.549876	106.980539	2	32	59.55	S	106	58	49.94	E
202	-2.549705	107.088417	2	32	58.94	S	107	5	18.30	E
203	-2.533036	105.847447	2	31	58.93	S	105	50	50.81	E
204	-2.533024	105.865436	2	31	58.89	S	105	51	55.57	E
205	-2.532999	105.901414	2	31	58.80	S	105	54	5.09	E
206	-2.532203	106.692805	2	31	55.93	S	106	41	34.10	E
207	-2.532179	106.710788	2	31	55.84	S	106	42	38.84	E
208	-2.53198	106.854646	2	31	55.13	S	106	51	16.73	E
209	-2.531928	106.890608	2	31	54.94	S	106	53	26.19	E
210	-2.531901	106.908589	2	31	54.84	S	106	54	30.92	E
211	-2.531874	106.92657	2	31	54.75	S	106	55	35.65	E
212	-2.53182	106.962531	2	31	54.55	S	106	57	45.11	E
213	-2.531793	106.980511	2	31	54.45	S	106	58	49.84	E
214	-2.531622	107.088388	2	31	53.84	S	107	5	18.20	E
215	-2.514931	105.865424	2	30	53.75	S	105	51	55.53	E
216	-2.514919	105.883413	2	30	53.71	S	105	53	0.29	E
217	-2.514907	105.901402	2	30	53.67	S	105	54	5.05	E
218	-2.51414	106.674799	2	30	50.90	S	106	40	29.28	E
219	-2.514116	106.692782	2	30	50.82	S	106	41	34.02	E
220	-2.514093	106.710765	2	30	50.73	S	106	42	38.75	E
221	-2.514069	106.728747	2	30	50.65	S	106	43	43.49	E
222	-2.514045	106.74673	2	30	50.56	S	106	44	48.23	E
223	-2.51402	106.764712	2	30	50.47	S	106	45	52.96	E
224	-2.513946	106.818657	2	30	50.21	S	106	49	7.17	E
225	-2.513921	106.836639	2	30	50.12	S	106	50	11.90	E
226	-2.513895	106.85462	2	30	50.02	S	106	51	16.63	E
227	-2.513869	106.872601	2	30	49.93	S	106	52	21.36	E
228	-2.513843	106.890582	2	30	49.83	S	106	53	26.10	E
229	-2.513817	106.908563	2	30	49.74	S	106	54	30.83	E
230	-2.513764	106.944524	2	30	49.55	S	106	56	40.29	E
231	-2.513737	106.962504	2	30	49.45	S	106	57	45.01	E
232	-2.513709	106.980484	2	30	49.35	S	106	58	49.74	E
233	-2.51354	107.088359	2	30	48.74	S	107	5	18.09	E
234	-2.496927	105.721503	2	29	48.94	S	105	43	17.41	E

CATATAN : BERLAKU MULAI 7 JULI 2020 HINGGA 10 JULI 2020

235	-2.496896	105.77547	2	29	48.83	S	105	46	31.69	E
236	-2.496885	105.793458	2	29	48.79	S	105	47	36.45	E
237	-2.496839	105.865413	2	29	48.62	S	105	51	55.49	E
238	-2.496827	105.883401	2	29	48.58	S	105	53	0.24	E
239	-2.496815	105.901389	2	29	48.53	S	105	54	5.00	E
240	-2.496802	105.919377	2	29	48.49	S	105	55	9.76	E
241	-2.495959	106.746706	2	29	45.45	S	106	44	48.14	E
242	-2.495935	106.764687	2	29	45.37	S	106	45	52.87	E
243	-2.49591	106.782669	2	29	45.28	S	106	46	57.61	E
244	-2.495886	106.800651	2	29	45.19	S	106	48	2.34	E
245	-2.495861	106.818632	2	29	45.10	S	106	49	7.08	E
246	-2.495836	106.836614	2	29	45.01	S	106	50	11.81	E
247	-2.49581	106.854595	2	29	44.92	S	106	51	16.54	E
248	-2.495785	106.872575	2	29	44.83	S	106	52	21.27	E
249	-2.495759	106.890556	2	29	44.73	S	106	53	26.00	E
250	-2.495733	106.908537	2	29	44.64	S	106	54	30.73	E
251	-2.495706	106.926517	2	29	44.54	S	106	55	35.46	E
252	-2.49568	106.944497	2	29	44.45	S	106	56	40.19	E
253	-2.495653	106.962477	2	29	44.35	S	106	57	44.92	E
254	-2.495458	107.088331	2	29	43.65	S	107	5	17.99	E
255	-2.478834	105.721493	2	28	43.80	S	105	43	17.37	E
256	-2.478824	105.739482	2	28	43.77	S	105	44	22.14	E
257	-2.478814	105.75747	2	28	43.73	S	105	45	26.89	E
258	-2.478803	105.775459	2	28	43.69	S	105	46	31.65	E
259	-2.478759	105.847413	2	28	43.53	S	105	50	50.69	E
260	-2.478747	105.865401	2	28	43.49	S	105	51	55.44	E
261	-2.478723	105.901377	2	28	43.40	S	105	54	4.96	E
262	-2.47871	105.919365	2	28	43.36	S	105	55	9.71	E
263	-2.477776	106.818607	2	28	39.99	S	106	49	6.99	E
264	-2.477751	106.836588	2	28	39.90	S	106	50	11.72	E
265	-2.477726	106.854569	2	28	39.81	S	106	51	16.45	E
266	-2.4777	106.87255	2	28	39.72	S	106	52	21.18	E
267	-2.477404	107.070324	2	28	38.65	S	107	4	13.17	E
268	-2.477376	107.088302	2	28	38.55	S	107	5	17.89	E
269	-2.460731	105.739472	2	27	38.63	S	105	44	22.10	E
270	-2.460721	105.75746	2	27	38.60	S	105	45	26.86	E
271	-2.460689	105.811425	2	27	38.48	S	105	48	41.13	E
272	-2.460678	105.829413	2	27	38.44	S	105	49	45.89	E
273	-2.460231	106.36901	2	27	36.83	S	106	22	8.44	E
274	-2.460193	106.404979	2	27	36.69	S	106	24	17.92	E
275	-2.459925	106.638766	2	27	35.73	S	106	38	19.56	E
276	-2.459903	106.656748	2	27	35.65	S	106	39	24.29	E
277	-2.459691	106.818583	2	27	34.89	S	106	49	6.90	E
278	-2.459666	106.836564	2	27	34.80	S	106	50	11.63	E
279	-2.459641	106.854544	2	27	34.71	S	106	51	16.36	E
280	-2.459616	106.872525	2	27	34.62	S	106	52	21.09	E
281	-2.459377	107.034339	2	27	33.76	S	107	2	3.62	E
282	-2.45935	107.052318	2	27	33.66	S	107	3	8.34	E
283	-2.459322	107.070296	2	27	33.56	S	107	4	13.07	E
284	-2.459294	107.088274	2	27	33.46	S	107	5	17.79	E
285	-2.442628	105.75745	2	26	33.46	S	105	45	26.82	E
286	-2.442618	105.775438	2	26	33.42	S	105	46	31.58	E
287	-2.442607	105.793426	2	26	33.39	S	105	47	36.33	E
288	-2.442596	105.811414	2	26	33.35	S	105	48	41.09	E
289	-2.442585	105.829402	2	26	33.31	S	105	49	45.85	E
290	-2.442142	106.368992	2	26	31.71	S	106	22	8.37	E
291	-2.442104	106.404961	2	26	31.57	S	106	24	17.86	E
292	-2.44186	106.620761	2	26	30.70	S	106	37	14.74	E
293	-2.441838	106.638744	2	26	30.62	S	106	38	19.48	E
294	-2.441606	106.818558	2	26	29.78	S	106	49	6.81	E
295	-2.441581	106.836539	2	26	29.69	S	106	50	11.54	E
296	-2.441556	106.854519	2	26	29.60	S	106	51	16.27	E
297	-2.441531	106.872499	2	26	29.51	S	106	52	21.00	E
298	-2.441506	106.890479	2	26	29.42	S	106	53	25.72	E
299	-2.441295	107.034312	2	26	28.66	S	107	2	3.52	E
300	-2.441267	107.05229	2	26	28.56	S	107	3	8.24	E
301	-2.441239	107.070268	2	26	28.46	S	107	4	12.96	E
302	-2.441211	107.088246	2	26	28.36	S	107	5	17.69	E

303	-2.424535	105.75744	2	25	28.33	S	105	45	26.78	E
304	-2.424525	105.775428	2	25	28.29	S	105	46	31.54	E
305	-2.424515	105.793416	2	25	28.25	S	105	47	36.30	E
306	-2.424504	105.811403	2	25	28.21	S	105	48	41.05	E
307	-2.424493	105.829391	2	25	28.17	S	105	49	45.81	E
308	-2.424053	106.368974	2	25	26.59	S	106	22	8.31	E
309	-2.424034	106.386958	2	25	26.52	S	106	23	13.05	E
310	-2.424015	106.404942	2	25	26.45	S	106	24	17.79	E
311	-2.423773	106.62074	2	25	25.58	S	106	37	14.66	E
312	-2.423471	106.854495	2	25	24.50	S	106	51	16.18	E
313	-2.423447	106.872475	2	25	24.41	S	106	52	20.91	E
314	-2.423421	106.890454	2	25	24.32	S	106	53	25.63	E
315	-2.423396	106.908434	2	25	24.23	S	106	54	30.36	E
316	-2.423129	107.088218	2	25	23.26	S	107	5	17.58	E
317	-2.406453	105.739442	2	24	23.23	S	105	44	21.99	E
318	-2.406443	105.75743	2	24	23.19	S	105	45	26.75	E
319	-2.406433	105.775417	2	24	23.16	S	105	46	31.50	E
320	-2.406411	105.811393	2	24	23.08	S	105	48	41.01	E
321	-2.405945	106.386939	2	24	21.40	S	106	23	12.98	E
322	-2.405927	106.404923	2	24	21.34	S	106	24	17.72	E
323	-2.405908	106.422907	2	24	21.27	S	106	25	22.47	E
324	-2.405889	106.440891	2	24	21.20	S	106	26	27.21	E
325	-2.405686	106.620718	2	24	20.47	S	106	37	14.58	E
326	-2.405664	106.6387	2	24	20.39	S	106	38	19.32	E
327	-2.405643	106.656682	2	24	20.31	S	106	39	24.06	E
328	-2.405411	106.83649	2	24	19.48	S	106	50	11.36	E
329	-2.405362	106.87245	2	24	19.30	S	106	52	20.82	E
330	-2.405337	106.890429	2	24	19.21	S	106	53	25.54	E
331	-2.405312	106.908409	2	24	19.12	S	106	54	30.27	E
332	-2.405182	106.998302	2	24	18.66	S	106	59	53.89	E
333	-2.405156	107.01628	2	24	18.56	S	107	0	58.61	E
334	-2.38836	105.739432	2	23	18.10	S	105	44	21.96	E
335	-2.38835	105.75742	2	23	18.06	S	105	45	26.71	E
336	-2.38834	105.775407	2	23	18.02	S	105	46	31.47	E
337	-2.38833	105.793395	2	23	17.99	S	105	47	36.22	E
338	-2.387819	106.422888	2	23	16.15	S	106	25	22.40	E
339	-2.3878	106.440872	2	23	16.08	S	106	26	27.14	E
340	-2.387781	106.458855	2	23	16.01	S	106	27	31.88	E
341	-2.38762	106.602715	2	23	15.43	S	106	36	9.77	E
342	-2.387578	106.638679	2	23	15.28	S	106	38	19.24	E
343	-2.387556	106.65666	2	23	15.20	S	106	39	23.98	E
344	-2.387326	106.836466	2	23	14.37	S	106	50	11.28	E
345	-2.387302	106.854446	2	23	14.29	S	106	51	16.01	E
346	-2.387277	106.872425	2	23	14.20	S	106	52	20.73	E
347	-2.387228	106.908383	2	23	14.02	S	106	54	30.18	E
348	-2.387202	106.926362	2	23	13.93	S	106	55	34.90	E
349	-2.387177	106.944341	2	23	13.84	S	106	56	39.63	E
350	-2.387151	106.962319	2	23	13.74	S	106	57	44.35	E
351	-2.387125	106.980298	2	23	13.65	S	106	58	49.07	E
352	-2.387099	106.998276	2	23	13.56	S	106	59	53.79	E
353	-2.387073	107.016254	2	23	13.46	S	107	0	58.51	E
354	-2.387046	107.034231	2	23	13.37	S	107	2	3.23	E
355	-2.387019	107.052209	2	23	13.27	S	107	3	7.95	E
356	-2.386992	107.070186	2	23	13.17	S	107	4	12.67	E
357	-2.386965	107.088163	2	23	13.07	S	107	5	17.39	E
358	-2.370277	105.721435	2	22	13.00	S	105	43	17.17	E
359	-2.370267	105.739423	2	22	12.96	S	105	44	21.92	E
360	-2.370257	105.75741	2	22	12.93	S	105	45	26.68	E
361	-2.370247	105.775397	2	22	12.89	S	105	46	31.43	E
362	-2.370237	105.793384	2	22	12.85	S	105	47	36.18	E
363	-2.369731	106.42287	2	22	11.03	S	106	25	22.33	E
364	-2.369712	106.440853	2	22	10.96	S	106	26	27.07	E
365	-2.369693	106.458836	2	22	10.89	S	106	27	31.81	E
366	-2.369674	106.476819	2	22	10.83	S	106	28	36.55	E
367	-2.369654	106.494801	2	22	10.75	S	106	29	41.28	E
368	-2.369635	106.512784	2	22	10.69	S	106	30	46.02	E
369	-2.369615	106.530766	2	22	10.61	S	106	31	50.76	E

CATATAN : BERLAKU MULAI 7 JULI 2020 HINGGA 10 JULI 2020

370	-2.369595	106.548749	2	22	10.54	S	106	32	55.50	E
371	-2.369554	106.584713	2	22	10.39	S	106	35	4.97	E
372	-2.369533	106.602694	2	22	10.32	S	106	36	9.70	E
373	-2.369469	106.656639	2	22	10.09	S	106	39	23.90	E
374	-2.369265	106.818463	2	22	9.35	S	106	49	6.47	E
375	-2.369241	106.836442	2	22	9.27	S	106	50	11.19	E
376	-2.369217	106.854422	2	22	9.18	S	106	51	15.92	E
377	-2.369168	106.89038	2	22	9.00	S	106	53	25.37	E
378	-2.369143	106.908359	2	22	8.91	S	106	54	30.09	E
379	-2.369118	106.926337	2	22	8.82	S	106	55	34.81	E
380	-2.369068	106.962294	2	22	8.64	S	106	57	44.26	E
381	-2.369042	106.980272	2	22	8.55	S	106	58	48.98	E
382	-2.36899	107.016227	2	22	8.36	S	107	0	58.42	E
383	-2.368963	107.034205	2	22	8.27	S	107	2	3.14	E
384	-2.368937	107.052182	2	22	8.17	S	107	3	7.86	E
385	-2.36891	107.070159	2	22	8.08	S	107	4	12.57	E
386	-2.368883	107.088136	2	22	7.98	S	107	5	17.29	E
387	-2.352184	105.721426	2	21	7.86	S	105	43	17.13	E
388	-2.352174	105.739413	2	21	7.83	S	105	44	21.89	E
389	-2.352144	105.793374	2	21	7.72	S	105	47	36.15	E
390	-2.351714	106.350918	2	21	6.17	S	106	21	3.30	E
391	-2.351696	106.368902	2	21	6.11	S	106	22	8.05	E
392	-2.35166	106.404868	2	21	5.98	S	106	24	17.52	E
393	-2.351642	106.422851	2	21	5.91	S	106	25	22.26	E
394	-2.351623	106.440834	2	21	5.84	S	106	26	27.00	E
395	-2.351585	106.4768	2	21	5.71	S	106	28	36.48	E
396	-2.351566	106.494782	2	21	5.64	S	106	29	41.22	E
397	-2.351547	106.512764	2	21	5.57	S	106	30	45.95	E
398	-2.351527	106.530747	2	21	5.50	S	106	31	50.69	E
399	-2.351507	106.548729	2	21	5.43	S	106	32	55.42	E
400	-2.351425	106.620655	2	21	5.13	S	106	37	14.36	E
401	-2.351404	106.638636	2	21	5.05	S	106	38	19.09	E
402	-2.351382	106.656617	2	21	4.98	S	106	39	23.82	E
403	-2.35125	106.7645	2	21	4.50	S	106	45	52.20	E
404	-2.351227	106.78248	2	21	4.42	S	106	46	56.93	E
405	-2.351203	106.80046	2	21	4.33	S	106	48	1.66	E
406	-2.35118	106.818439	2	21	4.25	S	106	49	6.38	E
407	-2.351156	106.836418	2	21	4.16	S	106	50	11.10	E
408	-2.351132	106.854398	2	21	4.08	S	106	51	15.83	E
409	-2.351108	106.872377	2	21	3.99	S	106	52	20.56	E
410	-2.351084	106.890355	2	21	3.90	S	106	53	25.28	E
411	-2.350984	106.962269	2	21	3.54	S	106	57	44.17	E
412	-2.350958	106.980246	2	21	3.45	S	106	58	48.89	E
413	-2.350933	106.998224	2	21	3.36	S	106	59	53.61	E
414	-2.350907	107.016201	2	21	3.27	S	107	0	58.32	E
415	-2.350881	107.034179	2	21	3.17	S	107	2	3.04	E
416	-2.350854	107.052156	2	21	3.07	S	107	3	7.76	E
417	-2.350827	107.070132	2	21	2.98	S	107	4	12.48	E
418	-2.3508	107.088109	2	21	2.88	S	107	5	17.19	E
419	-2.350773	107.106085	2	21	2.78	S	107	6	21.91	E
420	-2.350746	107.124062	2	21	2.69	S	107	7	26.62	E
421	-2.334091	105.721417	2	20	2.73	S	105	43	17.10	E
422	-2.334081	105.739404	2	20	2.69	S	105	44	21.85	E
423	-2.334052	105.793364	2	20	2.59	S	105	47	36.11	E
424	-2.333624	106.350901	2	20	1.05	S	106	21	3.24	E
425	-2.333589	106.386867	2	20	0.92	S	106	23	12.72	E
426	-2.333571	106.40485	2	20	0.86	S	106	24	17.46	E
427	-2.333553	106.422833	2	20	0.79	S	106	25	22.20	E
428	-2.333497	106.476781	2	20	0.59	S	106	28	36.41	E
429	-2.333186	106.746498	2	19	59.47	S	106	44	47.39	E
430	-2.333164	106.764477	2	19	59.39	S	106	45	52.12	E
431	-2.333141	106.782457	2	19	59.31	S	106	46	56.85	E
432	-2.333095	106.818416	2	19	59.14	S	106	49	6.30	E
433	-2.333071	106.836395	2	19	59.06	S	106	50	11.02	E
434	-2.333048	106.854374	2	19	58.97	S	106	51	15.75	E
435	-2.333024	106.872353	2	19	58.89	S	106	52	20.47	E
436	-2.332999	106.890331	2	19	58.80	S	106	53	25.19	E

437	-2.3329	106.962243	2	19	58.44	S	106	57	44.07	E
438	-2.332849	106.998198	2	19	58.26	S	106	59	53.51	E
439	-2.332824	107.016176	2	19	58.17	S	107	0	58.23	E
440	-2.332798	107.034153	2	19	58.07	S	107	2	2.95	E
441	-2.332771	107.052129	2	19	57.98	S	107	3	7.66	E
442	-2.332745	107.070106	2	19	57.88	S	107	4	12.38	E
443	-2.315535	106.350884	2	18	55.93	S	106	21	3.18	E
444	-2.3155	106.38685	2	18	55.80	S	106	23	12.66	E
445	-2.315482	106.404832	2	18	55.74	S	106	24	17.40	E
446	-2.315464	106.422815	2	18	55.67	S	106	25	22.13	E
447	-2.315428	106.45878	2	18	55.54	S	106	27	31.61	E
448	-2.315409	106.476762	2	18	55.47	S	106	28	36.34	E
449	-2.315292	106.584652	2	18	55.05	S	106	35	4.75	E
450	-2.315101	106.746475	2	18	54.36	S	106	44	47.31	E
451	-2.315078	106.764455	2	18	54.28	S	106	45	52.04	E
452	-2.315056	106.782434	2	18	54.20	S	106	46	56.76	E
453	-2.315033	106.800414	2	18	54.12	S	106	48	1.49	E
454	-2.31501	106.818393	2	18	54.04	S	106	49	6.21	E
455	-2.314986	106.836372	2	18	53.95	S	106	50	10.94	E
456	-2.314939	106.872329	2	18	53.78	S	106	52	20.38	E
457	-2.314915	106.890307	2	18	53.69	S	106	53	25.11	E
458	-2.314891	106.908285	2	18	53.61	S	106	54	29.83	E
459	-2.314792	106.980196	2	18	53.25	S	106	58	48.71	E
460	-2.314766	106.998173	2	18	53.16	S	106	59	53.42	E
461	-2.314741	107.01615	2	18	53.07	S	107	0	58.14	E
462	-2.314689	107.052103	2	18	52.88	S	107	3	7.57	E
463	-2.297463	106.332884	2	17	50.87	S	106	19	58.38	E
464	-2.297446	106.350867	2	17	50.81	S	106	21	3.12	E
465	-2.297394	106.404815	2	17	50.62	S	106	24	17.33	E
466	-2.297376	106.422797	2	17	50.55	S	106	25	22.07	E
467	-2.297358	106.440779	2	17	50.49	S	106	26	26.80	E
468	-2.297339	106.458761	2	17	50.42	S	106	27	31.54	E
469	-2.297204	106.584632	2	17	49.93	S	106	35	4.68	E
470	-2.297184	106.602612	2	17	49.86	S	106	36	9.40	E
471	-2.297164	106.620593	2	17	49.79	S	106	37	14.13	E
472	-2.297015	106.746453	2	17	49.25	S	106	44	47.23	E
473	-2.296901	106.836348	2	17	48.84	S	106	50	10.85	E
474	-2.296854	106.872305	2	17	48.67	S	106	52	20.30	E
475	-2.296831	106.890283	2	17	48.59	S	106	53	25.02	E
476	-2.296782	106.926239	2	17	48.42	S	106	55	34.46	E
477	-2.296683	106.998148	2	17	48.06	S	106	59	53.33	E
478	-2.296658	107.016124	2	17	47.97	S	107	0	58.05	E
479	-2.296606	107.052077	2	17	47.78	S	107	3	7.48	E
480	-2.279373	106.332867	2	16	45.74	S	106	19	58.32	E
481	-2.279269	106.440761	2	16	45.37	S	106	26	26.74	E
482	-2.279077	106.620573	2	16	44.68	S	106	37	14.06	E
483	-2.279056	106.638553	2	16	44.60	S	106	38	18.79	E
484	-2.278951	106.728452	2	16	44.22	S	106	43	42.43	E
485	-2.278929	106.746431	2	16	44.14	S	106	44	47.15	E
486	-2.278907	106.764411	2	16	44.07	S	106	45	51.88	E
487	-2.278884	106.78239	2	16	43.98	S	106	46	56.60	E
488	-2.278839	106.818347	2	16	43.82	S	106	49	6.05	E
489	-2.278816	106.836325	2	16	43.74	S	106	50	10.77	E
490	-2.278793	106.854304	2	16	43.65	S	106	51	15.49	E
491	-2.27877	106.872282	2	16	43.57	S	106	52	20.22	E
492	-2.278698	106.926215	2	16	43.31	S	106	55	34.37	E
493	-2.278674	106.944192	2	16	43.23	S	106	56	39.09	E
494	-2.278625	106.980146	2	16	43.05	S	106	58	48.53	E
495	-2.2786	106.998123	2	16	42.96	S	106	59	53.24	E
496	-2.278549	107.034075	2	16	42.78	S	107	2	2.67	E
497	-2.278523	107.052052	2	16	42.68	S	107	3	7.39	E
498	-2.278498	107.070028	2	16	42.59	S	107	4	12.10	E
499	-2.261364	106.242937	2	15	40.91	S	106	14	34.57	E
500	-2.261284	106.332851	2	15	40.62	S	106	19	58.26	E
501	-2.260969	106.638533	2	15	39.49	S	106	38	18.72	E
502	-2.260949	106.656513	2	15	39.42	S	106	39	23.45	E
503	-2.260928	106.674492	2	15	39.34	S	106	40	28.17	E
504	-2.260865	106.728431	2	15	39.11	S	106	43	42.35	E

CATATAN : BERLAKU MULAI 7 JULI 2020 HINGGA 10 JULI 2020

505	-2.260799	106.782367	2	15	38.88	S	106	46	56.52	E
506	-2.260754	106.818324	2	15	38.71	S	106	49	5.97	E
507	-2.260708	106.854281	2	15	38.55	S	106	51	15.41	E
508	-2.260685	106.872258	2	15	38.47	S	106	52	20.13	E
509	-2.26059	106.944168	2	15	38.12	S	106	56	39.00	E
510	-2.260541	106.980121	2	15	37.95	S	106	58	48.44	E
511	-2.243274	106.242921	2	14	35.79	S	106	14	34.52	E
512	-2.243211	106.314852	2	14	35.56	S	106	18	53.47	E
513	-2.243195	106.332834	2	14	35.50	S	106	19	58.20	E
514	-2.243178	106.350816	2	14	35.44	S	106	21	2.94	E
515	-2.243161	106.368799	2	14	35.38	S	106	22	7.68	E
516	-2.242883	106.638513	2	14	34.38	S	106	38	18.65	E
517	-2.242862	106.656492	2	14	34.30	S	106	39	23.37	E
518	-2.242842	106.674472	2	14	34.23	S	106	40	28.10	E
519	-2.242821	106.692451	2	14	34.16	S	106	41	32.82	E
520	-2.225199	106.224923	2	13	30.72	S	106	13	29.72	E
521	-2.225184	106.242906	2	13	30.66	S	106	14	34.46	E
522	-2.225121	106.314836	2	13	30.44	S	106	18	53.41	E
523	-2.225089	106.3508	2	13	30.32	S	106	21	2.88	E
524	-2.224796	106.638492	2	13	29.27	S	106	38	18.57	E
525	-2.224775	106.656472	2	13	29.19	S	106	39	23.30	E
526	-2.224755	106.674451	2	13	29.12	S	106	40	28.02	E
527	-2.207109	106.224908	2	12	25.59	S	106	13	29.67	E
528	-2.207094	106.242891	2	12	25.54	S	106	14	34.41	E
529	-2.207079	106.260873	2	12	25.48	S	106	15	39.14	E
530	-2.207063	106.278856	2	12	25.43	S	106	16	43.88	E
531	-2.207048	106.296838	2	12	25.37	S	106	17	48.62	E
532	-2.207032	106.31482	2	12	25.32	S	106	18	53.35	E
533	-2.206668	106.674431	2	12	24.00	S	106	40	27.95	E
534	-2.189004	106.242876	2	11	20.41	S	106	14	34.35	E
535	-2.188989	106.260858	2	11	20.36	S	106	15	39.09	E
536	-2.188582	106.674411	2	11	18.90	S	106	40	27.88	E