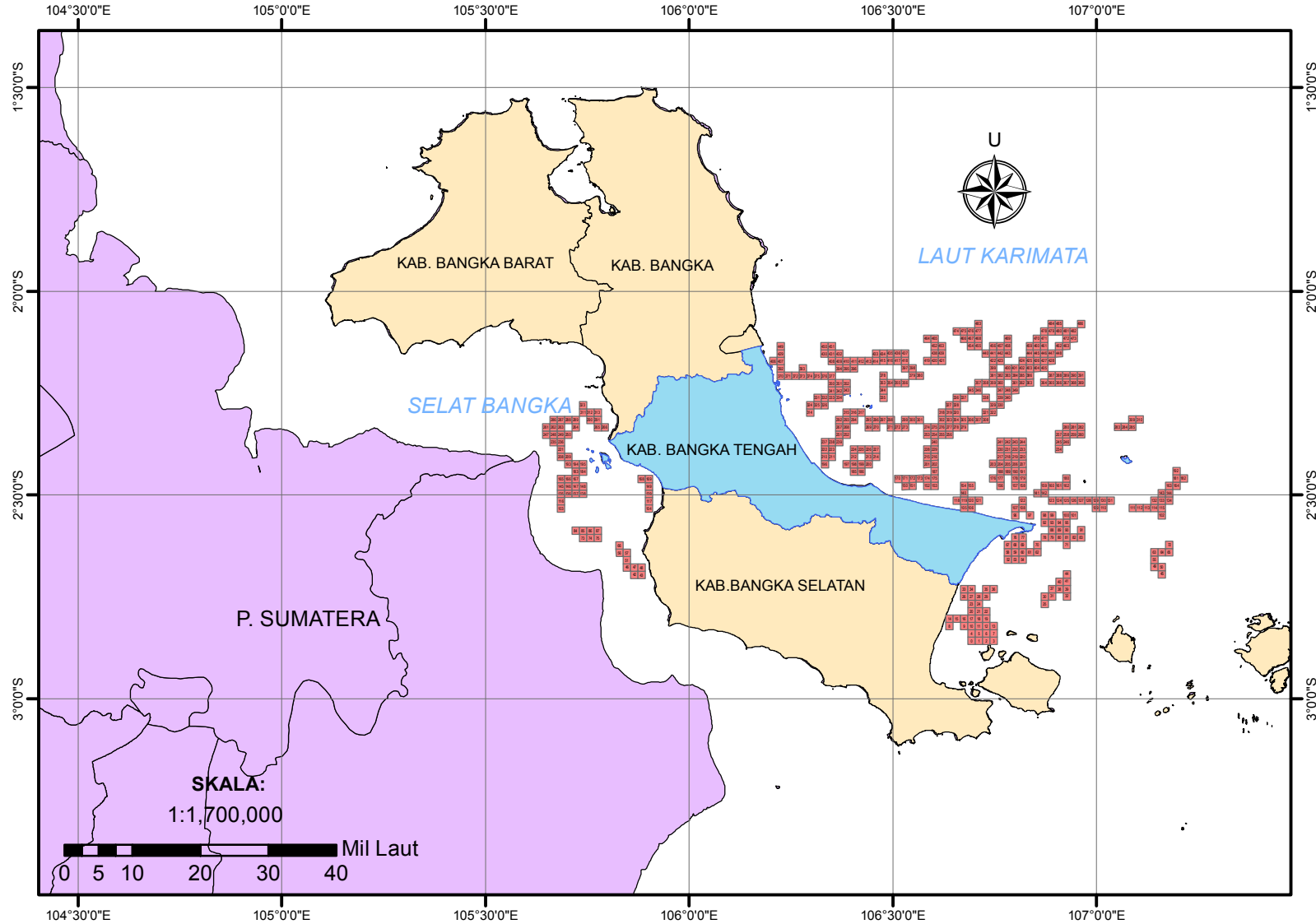
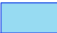





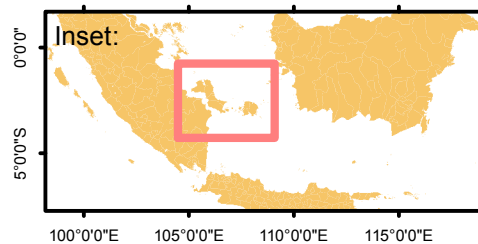


SISTEM INFORMASI DAERAH POTENSIAL PENANGKAPAN IKAN PERAIRAN KABUPATEN BANGKA TENGAH TANGGAL 10 JANUARI 2020



Legenda:

-  Kab. Bangka Tengah
-  Prov. Bangka Belitung
-  P. Sumatera
-  Daerah Potensial Penangkapan Ikan



Dibuat oleh:
**Dinas Perikanan
Kabupaten Bangka Tengah**

- Sumber Data:
1. Data Ocean Color
 2. Data NCEP
 3. Peta RBI Dijital

NO	Lat	Lon
	Dec	Dec
0	-2.857756	106.693255
1	-2.857729	106.711243
2	-2.857702	106.729231
3	-2.857674	106.747218
4	-2.839669	106.693229
5	-2.839643	106.711216
6	-2.839616	106.729204
7	-2.839589	106.747191
8	-2.821661	106.63924
9	-2.821609	106.675215
10	-2.821583	106.693203
11	-2.821557	106.71119
12	-2.82153	106.729177
13	-2.821503	106.747164
14	-2.803574	106.639215
15	-2.803549	106.657202
16	-2.803523	106.675189
17	-2.803497	106.693176
18	-2.803471	106.711163
19	-2.803444	106.72915
20	-2.785411	106.693151
21	-2.785384	106.711137
22	-2.785358	106.729124
23	-2.767324	106.693125
24	-2.767298	106.711111
25	-2.767053	106.87298
26	-2.749264	106.675113
27	-2.749238	106.693099
28	-2.749212	106.711085
29	-2.749186	106.729071
30	-2.748968	106.872952
31	-2.74894	106.890936
32	-2.748882	106.926904
33	-2.731177	106.675088
34	-2.731152	106.693074
35	-2.7311	106.729045
36	-2.731074	106.747031
37	-2.730855	106.890908
38	-2.730827	106.908892
39	-2.730798	106.926875
40	-2.712743	106.908863
41	-2.712714	106.926847
42	-2.695853	105.865548
43	-2.69584	105.883539
44	-2.69463	106.926818
45	-2.694236	107.160581
46	-2.677774	105.847544
47	-2.677761	105.865535
48	-2.677748	105.883526
49	-2.676186	107.142569
50	-2.676154	107.160549
51	-2.659681	105.847532
52	-2.659679	106.782896
53	-2.658653	106.80088
54	-2.658627	106.818863
55	-2.658105	107.142537
56	-2.641601	105.829529
57	-2.641589	105.84752
58	-2.640594	106.78287
59	-2.640568	106.800854

Latitude			
DD	MM	SS	Position
2	51	27.92	S
2	51	27.82	S
2	51	27.73	S
2	51	27.63	S
2	50	22.81	S
2	50	22.71	S
2	50	22.62	S
2	50	22.52	S
2	49	17.98	S
2	49	17.79	S
2	49	17.70	S
2	49	17.61	S
2	49	17.51	S
2	49	17.41	S
2	48	12.87	S
2	48	12.78	S
2	48	12.68	S
2	48	12.59	S
2	48	12.50	S
2	48	12.40	S
2	47	7.48	S
2	47	7.38	S
2	47	7.29	S
2	46	2.37	S
2	46	2.27	S
2	46	1.39	S
2	44	57.35	S
2	44	57.26	S
2	44	57.16	S
2	44	57.07	S
2	44	56.28	S
2	44	56.18	S
2	44	55.98	S
2	43	52.24	S
2	43	52.15	S
2	43	51.96	S
2	43	51.87	S
2	43	51.08	S
2	43	50.98	S
2	43	50.87	S
2	42	45.87	S
2	42	45.77	S
2	41	45.07	S
2	41	45.02	S
2	41	40.67	S
2	41	39.25	S
2	40	39.99	S
2	40	39.94	S
2	40	39.89	S
2	40	34.27	S
2	40	34.15	S
2	39	34.85	S
2	39	31.24	S
2	39	31.15	S
2	39	31.06	S
2	39	29.18	S
2	38	29.76	S
2	38	29.72	S
2	38	26.14	S
2	38	26.04	S

Longitude			
DD	MM	SS	Position
106	41	35.72	E
106	42	40.47	E
106	43	45.23	E
106	44	49.98	E
106	41	35.62	E
106	42	40.38	E
106	43	45.13	E
106	44	49.89	E
106	38	21.26	E
106	40	30.77	E
106	41	35.53	E
106	42	40.28	E
106	43	45.04	E
106	44	49.79	E
106	38	21.17	E
106	39	25.93	E
106	40	30.68	E
106	41	35.43	E
106	42	40.19	E
106	43	44.94	E
106	41	35.34	E
106	42	40.09	E
106	43	44.85	E
106	41	35.25	E
106	42	40.00	E
106	52	22.73	E
106	40	30.41	E
106	41	35.16	E
106	42	39.91	E
106	43	44.66	E
106	52	22.63	E
106	53	27.37	E
106	55	36.85	E
106	40	30.32	E
106	41	35.07	E
106	43	44.56	E
106	44	49.31	E
106	53	27.27	E
106	54	32.01	E
106	55	36.75	E
106	54	31.91	E
106	55	36.65	E
105	51	55.97	E
105	53	0.74	E
106	55	36.54	E
107	9	38.09	E
105	50	51.16	E
105	51	55.93	E
105	53	0.69	E
107	8	33.25	E
107	9	37.98	E
105	50	51.12	E
106	46	58.43	E
106	48	3.17	E
106	49	7.91	E
107	8	33.13	E
105	49	46.30	E
105	50	51.07	E
106	46	58.33	E
106	48	3.07	E

60	-2.640542	106.818837
61	-2.640515	106.83682
62	-2.640488	106.854803
63	-2.640023	107.142506
64	-2.639992	107.160486
65	-2.63996	107.178465
66	-2.623509	105.829517
67	-2.622509	106.782844
68	-2.622483	106.800828
69	-2.622457	106.818811
70	-2.622403	106.854777
71	-2.622294	106.926706
72	-2.621879	107.178434
73	-2.605473	105.739554
74	-2.605462	105.757544
75	-2.605451	105.775535
76	-2.604397	106.800802
77	-2.604371	106.818785
78	-2.604292	106.872732
79	-2.604265	106.890715
80	-2.604238	106.908697
81	-2.60421	106.926678
82	-2.604183	106.94466
83	-2.604154	106.962641
84	-2.587391	105.721553
85	-2.58738	105.739543
86	-2.58737	105.757533
87	-2.587359	105.775524
88	-2.586181	106.890688
89	-2.586154	106.908669
90	-2.586126	106.926651
91	-2.586071	106.962614
92	-2.568123	106.872679
93	-2.568096	106.890661
94	-2.568069	106.908642
95	-2.568042	106.926624
96	-2.550142	106.800726
97	-2.550091	106.83669
98	-2.550038	106.872653
99	-2.550012	106.890634
100	-2.549958	106.926597
101	-2.549931	106.944578
102	-2.549585	107.160332
103	-2.533132	105.685543
104	-2.532999	105.901414
105	-2.532226	106.674822
106	-2.532203	106.692805
107	-2.532056	106.8007
108	-2.532031	106.818682
109	-2.531765	106.938491
110	-2.531737	107.016471
111	-2.531622	107.088388
112	-2.531593	107.106367
113	-2.531564	107.124346
114	-2.531534	107.142324
115	-2.531504	107.160302
116	-2.515039	105.685534
117	-2.514907	105.901402
118	-2.514163	106.656816
119	-2.51414	106.674799
120	-2.514116	106.692782
121	-2.514093	106.710765
122	-2.513946	106.818657
123	-2.513843	106.890582

2	38	25.95	S
2	38	25.85	S
2	38	25.76	S
2	38	24.08	S
2	38	23.97	S
2	38	23.86	S
2	37	24.63	S
2	37	21.03	S
2	37	20.94	S
2	37	20.85	S
2	37	20.65	S
2	37	20.26	S
2	37	18.76	S
2	36	19.70	S
2	36	19.66	S
2	36	19.62	S
2	36	15.83	S
2	36	15.74	S
2	36	15.45	S
2	36	15.35	S
2	36	15.26	S
2	36	15.16	S
2	36	15.06	S
2	36	14.95	S
2	35	14.61	S
2	35	14.57	S
2	35	14.53	S
2	35	14.49	S
2	35	10.25	S
2	35	10.15	S
2	35	10.05	S
2	35	9.86	S
2	34	5.24	S
2	34	5.15	S
2	34	5.05	S
2	34	4.95	S
2	33	0.51	S
2	33	0.33	S
2	33	0.14	S
2	33	0.04	S
2	32	59.85	S
2	32	59.75	S
2	32	58.51	S
2	31	59.28	S
2	31	58.80	S
2	31	56.01	S
2	31	55.93	S
2	31	55.40	S
2	31	55.31	S
2	31	54.35	S
2	31	54.25	S
2	31	53.84	S
2	31	53.73	S
2	31	53.63	S
2	31	53.52	S
2	31	53.41	S
2	30	54.14	S
2	30	53.67	S
2	30	50.99	S
2	30	50.90	S
2	30	50.82	S
2	30	50.73	S
2	30	50.21	S
2	30	49.83	S

106	49	7.81	E
106	50	12.55	E
106	51	17.29	E
107	8	33.02	E
107	9	37.75	E
107	10	42.47	E
105	49	46.26	E
106	46	58.24	E
106	48	2.98	E
106	49	7.72	E
106	51	17.20	E
106	55	36.14	E
107	10	42.36	E
105	44	22.39	E
105	45	27.16	E
105	46	31.93	E
106	48	2.89	E
106	49	7.63	E
106	52	21.84	E
106	53	26.57	E
106	54	31.31	E
106	55	36.04	E
106	56	40.78	E
106	57	45.51	E
105	43	17.59	E
105	44	22.35	E
105	45	27.12	E
105	46	31.89	E
106	53	26.48	E
106	54	31.21	E
106	55	35.94	E
106	57	45.41	E
106	52	21.64	E
106	53	26.38	E
106	54	31.11	E
106	55	35.85	E
106	48	2.61	E
106	50	12.08	E
106	52	21.55	E
106	53	26.28	E
106	55	35.75	E
106	56	40.48	E
107	9	37.20	E
105	41	7.95	E
105	54	5.09	E
106	40	29.36	E
106	41	34.10	E
106	48	2.52	E
106	49	7.26	E
106	59	54.57	E
107	0	59.30	E
107	5	18.20	E
107	6	22.92	E
107	7	27.65	E
107	8	32.37	E
107	9	37.09	E
105	41	7.92	E
105	54	5.05	E
106	39	24.54	E
106	40	29.28	E
106	41	34.02	E
106	42	38.75	E
106	49	7.17	E
106	53	26.10	E

124	-2.513817	106.908563
125	-2.51379	106.926543
126	-2.513764	106.944524
127	-2.513737	106.962504
128	-2.513709	106.980484
129	-2.513682	106.998464
130	-2.513654	107.016443
131	-2.513626	107.034423
132	-2.513452	107.142294
133	-2.513423	107.160272
134	-2.513393	107.17825
135	-2.496946	105.685525
136	-2.496936	105.703514
137	-2.496927	105.721503
138	-2.496916	105.739492
139	-2.496815	105.901389
140	-2.496053	106.674776
141	-2.49581	106.854595
142	-2.495785	106.872575
143	-2.495341	107.160243
144	-2.495311	107.17822
145	-2.478853	105.685515
146	-2.478843	105.703504
147	-2.478834	105.721493
148	-2.478824	105.739482
149	-2.478723	105.901377
150	-2.478142	106.530888
151	-2.478121	106.548872
152	-2.478078	106.584839
153	-2.478056	106.602822
154	-2.477967	106.674753
155	-2.477944	106.692736
156	-2.477849	106.764663
157	-2.477801	106.800626
158	-2.477776	106.818607
159	-2.4777	106.87255
160	-2.477675	106.89053
161	-2.477649	106.908511
162	-2.477622	106.926491
163	-2.47723	107.178191
164	-2.4772	107.196168
165	-2.46076	105.685506
166	-2.460751	105.703495
167	-2.460741	105.721483
168	-2.460643	105.883377
169	-2.460631	105.901365
170	-2.460074	106.512884
171	-2.460054	106.530868
172	-2.460033	106.548851
173	-2.460012	106.566834
174	-2.459991	106.584817
175	-2.459969	106.6028
176	-2.459787	106.746658
177	-2.459764	106.76464
178	-2.459715	106.800602
179	-2.459691	106.818583
180	-2.459538	106.926465
181	-2.45912	107.196138
182	-2.45909	107.214114
183	-2.442648	105.721474
184	-2.442638	105.739462
185	-2.442104	106.404961
186	-2.442085	106.422945
187	-2.441882	106.602779

2	30	49.74	S
2	30	49.64	S
2	30	49.55	S
2	30	49.45	S
2	30	49.35	S
2	30	49.26	S
2	30	49.15	S
2	30	49.05	S
2	30	48.43	S
2	30	48.32	S
2	30	48.21	S
2	29	49.01	S
2	29	48.97	S
2	29	48.94	S
2	29	48.90	S
2	29	48.53	S
2	29	45.79	S
2	29	44.92	S
2	29	44.83	S
2	29	43.23	S
2	29	43.12	S
2	28	43.87	S
2	28	43.83	S
2	28	43.80	S
2	28	43.77	S
2	28	43.40	S
2	28	41.31	S
2	28	41.24	S
2	28	41.08	S
2	28	41.00	S
2	28	40.68	S
2	28	40.60	S
2	28	40.26	S
2	28	40.08	S
2	28	39.99	S
2	28	39.72	S
2	28	39.63	S
2	28	39.54	S
2	28	39.44	S
2	28	38.03	S
2	28	37.92	S
2	27	38.74	S
2	27	38.70	S
2	27	38.67	S
2	27	38.31	S
2	27	38.27	S
2	27	36.27	S
2	27	36.19	S
2	27	36.12	S
2	27	36.04	S
2	27	35.97	S
2	27	35.89	S
2	27	35.23	S
2	27	35.15	S
2	27	34.97	S
2	27	34.89	S
2	27	34.34	S
2	27	32.83	S
2	27	32.72	S
2	26	33.53	S
2	26	33.50	S
2	26	31.57	S
2	26	31.51	S
2	26	30.78	S

106	54	30.83	E
106	55	35.55	E
106	56	40.29	E
106	57	45.01	E
106	58	49.74	E
106	59	54.47	E
107	0	59.19	E
107	2	3.92	E
107	8	32.26	E
107	9	36.98	E
107	10	41.70	E
105	41	7.89	E
105	42	12.65	E
105	43	17.41	E
105	44	22.17	E
105	54	5.00	E
106	40	29.19	E
106	51	16.54	E
106	52	21.27	E
107	9	36.87	E
107	10	41.59	E
105	41	7.85	E
105	42	12.61	E
105	43	17.37	E
105	44	22.14	E
105	54	4.96	E
106	31	51.20	E
106	32	55.94	E
106	35	5.42	E
106	36	10.16	E
106	40	29.11	E
106	41	33.85	E
106	45	52.79	E
106	48	2.25	E
106	49	6.99	E
106	52	21.18	E
106	53	25.91	E
106	54	30.64	E
106	55	35.37	E
107	10	41.49	E
107	11	46.20	E
105	41	7.82	E
105	42	12.58	E
105	43	17.34	E
105	53	0.16	E
105	54	4.91	E
106	30	46.38	E
106	31	51.12	E
106	32	55.86	E
106	34	0.60	E
106	35	5.34	E
106	36	10.08	E
106	44	47.97	E
106	45	52.70	E
106	48	2.17	E
106	49	6.90	E
106	55	35.27	E
107	11	46.10	E
107	12	50.81	E
105	43	17.31	E
105	44	22.06	E
106	24	17.86	E
106	25	22.60	E
106	36	10.00	E

188	-2.441678	106.764616
189	-2.441654	106.782597
190	-2.44163	106.800578
191	-2.441606	106.818558
192	-2.441039	107.196108
193	-2.424565	105.703476
194	-2.424555	105.721464
195	-2.424545	105.739452
196	-2.424089	106.333005
197	-2.424034	106.386958
198	-2.424015	106.404942
199	-2.423997	106.422926
200	-2.423977	106.44091
201	-2.423816	106.584775
202	-2.423795	106.602757
203	-2.423616	106.746611
204	-2.423592	106.764592
205	-2.423569	106.782573
206	-2.423545	106.800554
207	-2.42352	106.818534
208	-2.406481	105.685479
209	-2.406472	105.703466
210	-2.405999	106.332987
211	-2.405981	106.350971
212	-2.405927	106.404923
213	-2.405889	106.440891
214	-2.40587	106.458874
215	-2.405729	106.584754
216	-2.405707	106.602736
217	-2.405507	106.764569
218	-2.405483	106.78255
219	-2.405459	106.80053
220	-2.405435	106.81851
221	-2.388388	105.68547
222	-2.38791	106.332969
223	-2.387892	106.350954
224	-2.387838	106.404905
225	-2.387819	106.422888
226	-2.3878	106.440872
227	-2.387781	106.458855
228	-2.387641	106.584733
229	-2.38762	106.602715
230	-2.387421	106.764546
231	-2.387398	106.782526
232	-2.387374	106.800506
233	-2.38735	106.818486
234	-2.387228	106.908383
235	-2.370304	105.667473
236	-2.370295	105.685461
237	-2.36982	106.332952
238	-2.369803	106.350936
239	-2.369785	106.36892
240	-2.369533	106.602694
241	-2.369335	106.764523
242	-2.369312	106.782503
243	-2.369289	106.800483
244	-2.369265	106.818463
245	-2.369143	106.908359
246	-2.369118	106.926337
247	-2.352219	105.649477
248	-2.352211	105.667464
249	-2.352202	105.685452
250	-2.352193	105.703439
251	-2.351696	106.368902

2	26	30.04	S
2	26	29.95	S
2	26	29.87	S
2	26	29.78	S
2	26	27.74	S
2	25	28.43	S
2	25	28.40	S
2	25	28.36	S
2	25	26.72	S
2	25	26.52	S
2	25	26.45	S
2	25	26.39	S
2	25	26.32	S
2	25	25.74	S
2	25	25.66	S
2	25	25.02	S
2	25	24.93	S
2	25	24.85	S
2	25	24.76	S
2	25	24.67	S
2	24	23.33	S
2	24	23.30	S
2	24	21.60	S
2	24	21.53	S
2	24	21.34	S
2	24	21.20	S
2	24	21.13	S
2	24	20.62	S
2	24	20.55	S
2	24	19.83	S
2	24	19.74	S
2	24	19.65	S
2	24	19.57	S
2	23	18.20	S
2	23	16.48	S
2	23	16.41	S
2	23	16.22	S
2	23	16.15	S
2	23	16.08	S
2	23	16.01	S
2	23	15.51	S
2	23	15.43	S
2	23	14.72	S
2	23	14.63	S
2	23	14.55	S
2	23	14.46	S
2	23	14.02	S
2	22	13.09	S
2	22	13.06	S
2	22	11.35	S
2	22	11.29	S
2	22	11.23	S
2	22	10.32	S
2	22	9.61	S
2	22	9.52	S
2	22	9.44	S
2	22	9.35	S
2	22	8.91	S
2	22	8.82	S
2	21	7.99	S
2	21	7.96	S
2	21	7.93	S
2	21	7.89	S
2	21	6.11	S

106	45	52.62	E
106	46	57.35	E
106	48	2.08	E
106	49	6.81	E
107	11	45.99	E
105	42	12.51	E
105	43	17.27	E
105	44	22.03	E
106	19	58.82	E
106	23	13.05	E
106	24	17.79	E
106	25	22.53	E
106	26	27.28	E
106	35	5.19	E
106	36	9.93	E
106	44	47.80	E
106	45	52.53	E
106	46	57.26	E
106	48	1.99	E
106	49	6.72	E
105	41	7.72	E
105	42	12.48	E
106	19	58.75	E
106	21	3.50	E
106	24	17.72	E
106	26	27.21	E
106	27	31.95	E
106	35	5.11	E
106	36	9.85	E
106	45	52.45	E
106	46	57.18	E
106	48	1.91	E
106	49	6.64	E
105	41	7.69	E
106	19	58.69	E
106	21	3.43	E
106	24	17.66	E
106	25	22.40	E
106	26	27.14	E
106	27	31.88	E
106	35	5.04	E
106	36	9.77	E
106	45	52.37	E
106	46	57.09	E
106	48	1.82	E
106	49	6.55	E
106	54	30.18	E
105	40	2.90	E
105	41	7.66	E
106	19	58.63	E
106	21	3.37	E
106	22	8.11	E
106	36	9.70	E
106	45	52.28	E
106	46	57.01	E
106	48	1.74	E
106	49	6.47	E
106	54	30.09	E
106	55	34.81	E
105	38	58.12	E
105	40	2.87	E
105	41	7.63	E
105	42	12.38	E
106	22	8.05	E

252	-2.351678	106.386885
253	-2.351466	106.584692
254	-2.351446	106.602674
255	-2.351425	106.620655
256	-2.351404	106.638636
257	-2.351059	106.908334
258	-2.351034	106.926312
259	-2.351009	106.944291
260	-2.350984	106.962269
261	-2.334126	105.649469
262	-2.334118	105.667456
263	-2.334109	105.685443
264	-2.334091	105.721417
265	-2.334062	105.775377
266	-2.334052	105.793364
267	-2.333607	106.368884
268	-2.333589	106.386867
269	-2.333535	106.440816
270	-2.333516	106.458798
271	-2.333478	106.494763
272	-2.333459	106.512745
273	-2.333439	106.530727
274	-2.333379	106.584672
275	-2.333359	106.602653
276	-2.333338	106.620634
277	-2.333317	106.638615
278	-2.333296	106.656596
279	-2.333274	106.674577
280	-2.33295	106.926288
281	-2.332925	106.944266
282	-2.3329	106.962243
283	-2.332771	107.052129
284	-2.332745	107.070106
285	-2.332718	107.088082
286	-2.316025	105.667447
287	-2.316016	105.685434
288	-2.316007	105.703421
289	-2.315998	105.721408
290	-2.315979	105.757381
291	-2.315969	105.775367
292	-2.315518	106.368867
293	-2.3155	106.38685
294	-2.315482	106.404832
295	-2.315446	106.440797
296	-2.315428	106.458778
297	-2.315409	106.476762
298	-2.31539	106.494744
299	-2.315351	106.530707
300	-2.315332	106.548689
301	-2.315312	106.56667
302	-2.315251	106.620614
303	-2.31523	106.638594
304	-2.315209	106.656575
305	-2.315188	106.674555
306	-2.315166	106.692536
307	-2.315145	106.710516
308	-2.315123	106.728496
309	-2.314636	107.088056
310	-2.314609	107.106032
311	-2.297896	105.739385
312	-2.297886	105.757371
313	-2.297877	105.775358
314	-2.297496	106.296918
315	-2.297411	106.386832

2	21	6.04	S
2	21	5.28	S
2	21	5.21	S
2	21	5.13	S
2	21	5.05	S
2	21	3.81	S
2	21	3.72	S
2	21	3.63	S
2	21	3.54	S
2	20	2.85	S
2	20	2.82	S
2	20	2.79	S
2	20	2.73	S
2	20	2.62	S
2	20	2.59	S
2	20	0.99	S
2	20	0.92	S
2	20	0.73	S
2	20	0.66	S
2	20	0.52	S
2	20	0.45	S
2	20	0.38	S
2	20	0.16	S
2	20	0.09	S
2	20	0.02	S
2	19	59.94	S
2	19	59.87	S
2	19	59.79	S
2	19	58.62	S
2	19	58.53	S
2	19	58.44	S
2	19	57.98	S
2	19	57.88	S
2	19	57.78	S
2	18	57.69	S
2	18	57.66	S
2	18	57.63	S
2	18	57.59	S
2	18	57.52	S
2	18	57.49	S
2	18	55.86	S
2	18	55.80	S
2	18	55.74	S
2	18	55.61	S
2	18	55.54	S
2	18	55.47	S
2	18	55.40	S
2	18	55.26	S
2	18	55.20	S
2	18	55.12	S
2	18	54.90	S
2	18	54.83	S
2	18	54.75	S
2	18	54.68	S
2	18	54.60	S
2	18	54.52	S
2	18	54.44	S
2	18	52.69	S
2	18	52.59	S
2	17	52.43	S
2	17	52.39	S
2	17	52.36	S
2	17	50.99	S
2	17	50.68	S

106	23	12.79	E
106	35	4.89	E
106	36	9.63	E
106	37	14.36	E
106	38	19.09	E
106	54	30.00	E
106	55	34.72	E
106	56	39.45	E
106	57	44.17	E
105	38	58.09	E
105	40	2.84	E
105	41	7.59	E
105	43	17.10	E
105	46	31.36	E
105	47	36.11	E
106	22	7.98	E
106	23	12.72	E
106	26	26.94	E
106	27	31.67	E
106	29	41.15	E
106	30	45.88	E
106	31	50.62	E
106	35	4.82	E
106	36	9.55	E
106	37	14.28	E
106	38	19.01	E
106	39	23.75	E
106	40	28.48	E
106	55	34.64	E
106	56	39.36	E
106	57	44.07	E
107	3	7.66	E
107	4	12.38	E
107	5	17.10	E
105	40	2.81	E
105	41	7.56	E
105	42	12.32	E
105	43	17.07	E
105	45	26.57	E
105	46	31.32	E
106	22	7.92	E
106	23	12.66	E
106	24	17.40	E
106	26	26.87	E
106	27	31.61	E
106	28	36.34	E
106	29	41.08	E
106	31	50.55	E
106	32	55.28	E
106	34	0.01	E
106	37	14.21	E
106	38	18.94	E
106	39	23.67	E
106	40	28.40	E
106	41	33.13	E
106	42	37.86	E
106	43	42.59	E
107	5	17.00	E
107	6	21.72	E
105	44	21.79	E
105	45	26.54	E
105	46	31.29	E
106	17	48.90	E
106	23	12.60	E

316	-2.297394	106.404815
317	-2.297376	106.422797
318	-2.297164	106.620593
319	-2.297143	106.638574
320	-2.297122	106.656554
321	-2.297037	106.728474
322	-2.297015	106.746453
323	-2.279803	105.739376
324	-2.279407	106.296902
325	-2.27939	106.314884
326	-2.279373	106.332867
327	-2.279056	106.638553
328	-2.279036	106.656533
329	-2.278929	106.746431
330	-2.278907	106.764411
331	-2.261301	106.314868
332	-2.261284	106.332851
333	-2.261267	106.350833
334	-2.26125	106.368815
335	-2.261144	106.476706
336	-2.260949	106.656513
337	-2.260928	106.674492
338	-2.260865	106.728431
339	-2.260821	106.764389
340	-2.260799	106.782367
341	-2.243178	106.350816
342	-2.243161	106.368799
343	-2.243144	106.386781
344	-2.243056	106.476688
345	-2.242821	106.692451
346	-2.2428	106.71043
347	-2.242735	106.764367
348	-2.242713	106.782345
349	-2.242691	106.800324
350	-2.225089	106.3508
351	-2.225072	106.368782
352	-2.225055	106.386764
353	-2.224967	106.47667
354	-2.224949	106.494651
355	-2.224931	106.512632
356	-2.224912	106.530612
357	-2.224714	106.710409
358	-2.224692	106.728388
359	-2.224671	106.746367
360	-2.22465	106.764345
361	-2.224606	106.800302
362	-2.224584	106.81828
363	-2.224561	106.836257
364	-2.224516	106.872212
365	-2.224493	106.89019
366	-2.22447	106.908167
367	-2.224446	106.926143
368	-2.224422	106.94412
369	-2.224398	106.962096
370	-2.207109	106.224908
371	-2.207094	106.242891
372	-2.207079	106.260873
373	-2.207063	106.278856
374	-2.207048	106.296838
375	-2.207032	106.31482
376	-2.207016	106.332802
377	-2.206999	106.350784
378	-2.206879	106.476652
379	-2.206806	106.548574

2	17	50.62	S
2	17	50.55	S
2	17	49.79	S
2	17	49.71	S
2	17	49.64	S
2	17	49.33	S
2	17	49.25	S
2	16	47.29	S
2	16	45.87	S
2	16	45.80	S
2	16	45.74	S
2	16	44.60	S
2	16	44.53	S
2	16	44.14	S
2	16	44.07	S
2	15	40.68	S
2	15	40.62	S
2	15	40.56	S
2	15	40.50	S
2	15	40.12	S
2	15	39.42	S
2	15	39.34	S
2	15	39.11	S
2	15	38.96	S
2	15	38.88	S
2	14	35.44	S
2	14	35.38	S
2	14	35.32	S
2	14	35.00	S
2	14	34.16	S
2	14	34.08	S
2	14	33.85	S
2	14	33.77	S
2	14	33.69	S
2	13	30.32	S
2	13	30.26	S
2	13	30.20	S
2	13	29.88	S
2	13	29.82	S
2	13	29.75	S
2	13	29.68	S
2	13	28.97	S
2	13	28.89	S
2	13	28.82	S
2	13	28.74	S
2	13	28.58	S
2	13	28.50	S
2	13	28.42	S
2	13	28.26	S
2	13	28.17	S
2	13	28.09	S
2	13	28.01	S
2	13	27.92	S
2	13	27.83	S
2	12	25.59	S
2	12	25.54	S
2	12	25.48	S
2	12	25.43	S
2	12	25.37	S
2	12	25.32	S
2	12	25.26	S
2	12	25.20	S
2	12	24.76	S
2	12	24.50	S

106	24	17.33	E
106	25	22.07	E
106	37	14.13	E
106	38	18.87	E
106	39	23.59	E
106	43	42.51	E
106	44	47.23	E
105	44	21.75	E
106	17	48.85	E
106	18	53.58	E
106	19	58.32	E
106	38	18.79	E
106	39	23.52	E
106	44	47.15	E
106	45	51.88	E
106	18	53.52	E
106	19	58.26	E
106	21	3.00	E
106	22	7.73	E
106	28	36.14	E
106	39	23.45	E
106	40	28.17	E
106	43	42.35	E
106	45	51.80	E
106	46	56.52	E
106	21	2.94	E
106	22	7.68	E
106	23	12.41	E
106	28	36.08	E
106	41	32.82	E
106	42	37.55	E
106	45	51.72	E
106	46	56.44	E
106	48	1.17	E
106	21	2.88	E
106	22	7.62	E
106	23	12.35	E
106	28	36.01	E
106	29	40.74	E
106	30	45.48	E
106	31	50.20	E
106	42	37.47	E
106	43	42.20	E
106	44	46.92	E
106	45	51.64	E
106	48	1.09	E
106	49	5.81	E
106	50	10.53	E
106	52	19.96	E
106	53	24.68	E
106	54	29.40	E
106	55	34.11	E
106	56	38.83	E
106	57	43.55	E
106	13	29.67	E
106	14	34.41	E
106	15	39.14	E
106	16	43.88	E
106	17	48.62	E
106	18	53.35	E
106	19	58.09	E
106	21	2.82	E
106	28	35.95	E
106	32	54.87	E

380	-2.206787	106.566554
381	-2.206585	106.746346
382	-2.206564	106.764324
383	-2.206542	106.782302
384	-2.206521	106.80028
385	-2.206499	106.818258
386	-2.206476	106.836235
387	-2.206408	106.890167
388	-2.206385	106.908143
389	-2.206362	106.92612
390	-2.206338	106.944096
391	-2.206315	106.962073
392	-2.189019	106.224894
393	-2.188974	106.27884
394	-2.188894	106.368749
395	-2.188877	106.38673
396	-2.18886	106.404711
397	-2.188736	106.530575
398	-2.188718	106.548555
399	-2.188499	106.746325
400	-2.188457	106.782281
401	-2.188435	106.800258
402	-2.188413	106.818236
403	-2.188391	106.836213
404	-2.188369	106.85419
405	-2.188347	106.872167
406	-2.170943	106.206897
407	-2.170929	106.224879
408	-2.170821	106.350751
409	-2.170805	106.368732
410	-2.170788	106.386713
411	-2.170771	106.404694
412	-2.170755	106.422675
413	-2.170737	106.440656
414	-2.17072	106.458636
415	-2.170703	106.476617
416	-2.170685	106.494597
417	-2.170667	106.512577
418	-2.170649	106.530557
419	-2.170593	106.584496
420	-2.170574	106.602475
421	-2.170554	106.620454
422	-2.170413	106.746304
423	-2.170392	106.764282
424	-2.170328	106.818214
425	-2.170306	106.836191
426	-2.170284	106.854168
427	-2.170262	106.872145
428	-2.17024	106.890121
429	-2.152839	106.224864
430	-2.152747	106.332754
431	-2.152732	106.350735
432	-2.152715	106.368716
433	-2.152632	106.458619
434	-2.152614	106.476599
435	-2.152597	106.494579
436	-2.152579	106.512559
437	-2.152561	106.530539
438	-2.152486	106.602456
439	-2.152467	106.620435
440	-2.152348	106.728305
441	-2.152328	106.746283
442	-2.152307	106.764261
443	-2.152286	106.782238

2	12	24.43	S
2	12	23.71	S
2	12	23.63	S
2	12	23.55	S
2	12	23.48	S
2	12	23.40	S
2	12	23.31	S
2	12	23.07	S
2	12	22.99	S
2	12	22.90	S
2	12	22.82	S
2	12	22.73	S
2	11	20.47	S
2	11	20.31	S
2	11	20.02	S
2	11	19.96	S
2	11	19.90	S
2	11	19.45	S
2	11	19.38	S
2	11	18.60	S
2	11	18.45	S
2	11	18.37	S
2	11	18.29	S
2	11	18.21	S
2	11	18.13	S
2	11	18.05	S
2	10	15.39	S
2	10	15.34	S
2	10	14.96	S
2	10	14.90	S
2	10	14.84	S
2	10	14.78	S
2	10	14.72	S
2	10	14.65	S
2	10	14.59	S
2	10	14.53	S
2	10	14.47	S
2	10	14.40	S
2	10	14.34	S
2	10	14.13	S
2	10	14.07	S
2	10	13.99	S
2	10	13.49	S
2	10	13.41	S
2	10	13.18	S
2	10	13.10	S
2	10	13.02	S
2	10	12.94	S
2	10	12.86	S
2	9	10.22	S
2	9	9.89	S
2	9	9.84	S
2	9	9.77	S
2	9	9.48	S
2	9	9.41	S
2	9	9.35	S
2	9	9.28	S
2	9	9.22	S
2	9	8.95	S
2	9	8.88	S
2	9	8.45	S
2	9	8.38	S
2	9	8.31	S
2	9	8.23	S

106	33	59.59	E
106	44	46.85	E
106	45	51.57	E
106	46	56.29	E
106	48	1.01	E
106	49	5.73	E
106	50	10.45	E
106	53	24.60	E
106	54	29.31	E
106	55	34.03	E
106	56	38.75	E
106	57	43.46	E
106	13	29.62	E
106	16	43.82	E
106	22	7.50	E
106	23	12.23	E
106	24	16.96	E
106	31	50.07	E
106	32	54.80	E
106	44	46.77	E
106	46	56.21	E
106	48	0.93	E
106	49	5.65	E
106	50	10.37	E
106	51	15.08	E
106	52	19.80	E
106	12	24.83	E
106	13	29.56	E
106	21	2.70	E
106	22	7.44	E
106	23	12.17	E
106	24	16.90	E
106	25	21.63	E
106	26	26.36	E
106	27	31.09	E
106	28	35.82	E
106	29	40.55	E
106	30	45.28	E
106	31	50.01	E
106	35	4.19	E
106	36	8.91	E
106	37	13.63	E
106	44	46.69	E
106	45	51.42	E
106	49	5.57	E
106	50	10.29	E
106	51	15.00	E
106	52	19.72	E
106	53	24.44	E
106	13	29.51	E
106	19	57.91	E
106	21	2.65	E
106	22	7.38	E
106	27	31.03	E
106	28	35.76	E
106	29	40.48	E
106	30	45.21	E
106	31	49.94	E
106	36	8.84	E
106	37	13.57	E
106	43	41.90	E
106	44	46.62	E
106	45	51.34	E
106	46	56.06	E

444	-2.152221	106.836169	2	9	8.00	S	106	50	10.21	E
445	-2.152199	106.854146	2	9	7.92	S	106	51	14.93	E
446	-2.152177	106.872123	2	9	7.84	S	106	52	19.64	E
447	-2.152155	106.890099	2	9	7.76	S	106	53	24.36	E
448	-2.152133	106.908075	2	9	7.68	S	106	54	29.07	E
449	-2.134748	106.22485	2	8	5.09	S	106	13	29.46	E
450	-2.134658	106.332738	2	8	4.77	S	106	19	57.86	E
451	-2.134642	106.350719	2	8	4.71	S	106	21	2.59	E
452	-2.134399	106.602437	2	8	3.84	S	106	36	8.77	E
453	-2.13438	106.620416	2	8	3.77	S	106	37	13.50	E
454	-2.134302	106.692329	2	8	3.49	S	106	41	32.38	E
455	-2.134282	106.710307	2	8	3.42	S	106	42	37.11	E
456	-2.134242	106.746263	2	8	3.27	S	106	44	46.55	E
457	-2.134221	106.76424	2	8	3.20	S	106	45	51.26	E
458	-2.1342	106.782217	2	8	3.12	S	106	46	55.98	E
459	-2.134136	106.836148	2	8	2.89	S	106	50	10.13	E
460	-2.134115	106.854124	2	8	2.81	S	106	51	14.85	E
461	-2.134093	106.872101	2	8	2.73	S	106	52	19.56	E
462	-2.134048	106.908053	2	8	2.57	S	106	54	28.99	E
463	-2.134026	106.926028	2	8	2.49	S	106	55	33.70	E
464	-2.11633	106.58444	2	6	58.79	S	106	35	3.98	E
465	-2.116312	106.602419	2	6	58.72	S	106	36	8.71	E
466	-2.116235	106.674332	2	6	58.45	S	106	40	27.60	E
467	-2.116216	106.69231	2	6	58.38	S	106	41	32.32	E
468	-2.116196	106.710287	2	6	58.31	S	106	42	37.03	E
469	-2.116115	106.782196	2	6	58.01	S	106	46	55.91	E
470	-2.11603	106.854103	2	6	57.71	S	106	51	14.77	E
471	-2.116008	106.872079	2	6	57.63	S	106	52	19.48	E
472	-2.115942	106.926006	2	6	57.39	S	106	55	33.62	E
473	-2.115919	106.943981	2	6	57.31	S	106	56	38.33	E
474	-2.098168	106.656335	2	5	53.40	S	106	39	22.81	E
475	-2.098149	106.674313	2	5	53.34	S	106	40	27.53	E
476	-2.098129	106.69229	2	5	53.26	S	106	41	32.24	E
477	-2.09811	106.710268	2	5	53.20	S	106	42	36.96	E
478	-2.097923	106.872057	2	5	52.52	S	106	52	19.41	E
479	-2.097902	106.890033	2	5	52.45	S	106	53	24.12	E
480	-2.09788	106.908008	2	5	52.37	S	106	54	28.83	E
481	-2.097858	106.925984	2	5	52.29	S	106	55	33.54	E
482	-2.097835	106.943959	2	5	52.21	S	106	56	38.25	E
483	-2.080023	106.710248	2	4	48.08	S	106	42	36.89	E
484	-2.079817	106.890011	2	4	47.34	S	106	53	24.04	E
485	-2.079795	106.907987	2	4	47.26	S	106	54	28.75	E
486	-2.079729	106.961911	2	4	47.02	S	106	57	42.88	E

CATATAN :

BERLAKU MULAI JUMAT 10 JANUARI 2020 HINGGA SELASA TANGGAL 14 JANUARI 2020