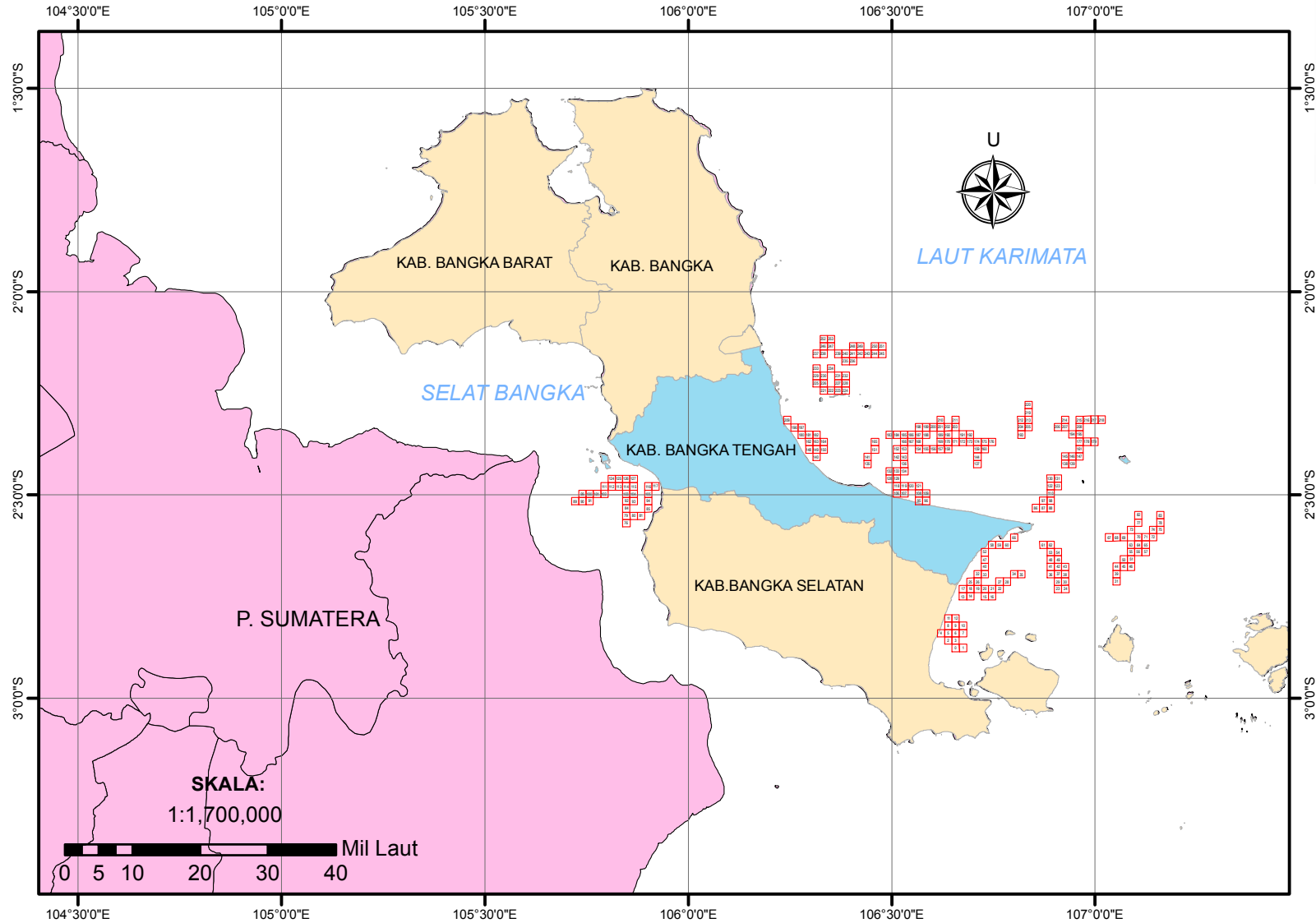
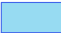





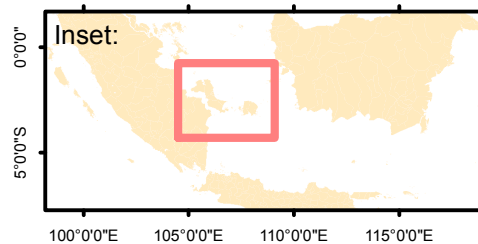


# SISTEM INFORMASI DAERAH POTENSIAL PENANGKAPAN IKAN PERAIRAN KABUPATEN BANGKA TENGAH TANGGAL 11 AGUSTUS 2020



### Legenda:

-  Kab. Bangka Tengah
-  Prov. Bangka Belitung
-  P. Sumatera
-  Daerah Potensial Penangkapan Ikan



Dibuat oleh:  
**Dinas Perikanan  
Kabupaten Bangka Tengah**

- Sumber Data:
1. Data Ocean Color
  2. Data NCEP
  3. Peta RBI Dijital

CATATAN : BERLAKU MULAI **11 AGUSTUS 2020** HINGGA **14 AGUSTUS 2020**

NO	Lat		Latitude				Longitude			
	Dec	Dec	DD	MM	SS	Position	DD	MM	SS	Position
0	-2.875895	106.657305	2	52	33.22	S	106	39	26.30	E
1	-2.875868	106.675294	2	52	33.12	S	106	40	31.06	E
2	-2.857834	106.639291	2	51	28.20	S	106	38	21.45	E
3	-2.857808	106.657279	2	51	28.11	S	106	39	26.20	E
4	-2.839773	106.621277	2	50	23.18	S	106	37	16.60	E
5	-2.839747	106.639265	2	50	23.09	S	106	38	21.35	E
6	-2.839722	106.657253	2	50	23.00	S	106	39	26.11	E
7	-2.839696	106.675241	2	50	22.91	S	106	40	30.87	E
8	-2.821661	106.63924	2	49	17.98	S	106	38	21.26	E
9	-2.821635	106.657228	2	49	17.89	S	106	39	26.02	E
10	-2.821609	106.675215	2	49	17.79	S	106	40	30.77	E
11	-2.803574	106.639215	2	48	12.87	S	106	38	21.17	E
12	-2.803549	106.657202	2	48	12.78	S	106	39	25.93	E
13	-2.749264	106.675113	2	44	57.35	S	106	40	30.41	E
14	-2.749238	106.693099	2	44	57.26	S	106	41	35.16	E
15	-2.749186	106.729071	2	44	57.07	S	106	43	44.66	E
16	-2.74916	106.747057	2	44	56.98	S	106	44	49.41	E
17	-2.731177	106.675088	2	43	52.24	S	106	40	30.32	E
18	-2.731152	106.693074	2	43	52.15	S	106	41	35.07	E
19	-2.731126	106.71106	2	43	52.05	S	106	42	39.82	E
20	-2.7311	106.729045	2	43	51.96	S	106	43	44.56	E
21	-2.731074	106.747031	2	43	51.87	S	106	44	49.31	E
22	-2.731048	106.765016	2	43	51.77	S	106	45	54.06	E
23	-2.730827	106.908892	2	43	50.98	S	106	54	32.01	E
24	-2.730798	106.926875	2	43	50.87	S	106	55	36.75	E
25	-2.713066	106.693049	2	42	47.04	S	106	41	34.98	E
26	-2.71304	106.711034	2	42	46.94	S	106	42	39.72	E
27	-2.712962	106.76499	2	42	46.66	S	106	45	53.96	E
28	-2.712936	106.782974	2	42	46.57	S	106	46	58.71	E
29	-2.712743	106.908863	2	42	45.87	S	106	54	31.91	E
30	-2.712714	106.926847	2	42	45.77	S	106	55	36.65	E
31	-2.712506	107.052725	2	42	45.02	S	107	3	9.81	E
32	-2.694954	106.711009	2	41	41.83	S	106	42	39.63	E
33	-2.694928	106.728994	2	41	41.74	S	106	43	44.38	E
34	-2.694824	106.800932	2	41	41.37	S	106	48	3.36	E
35	-2.694797	106.818917	2	41	41.27	S	106	49	8.10	E
36	-2.694687	106.890852	2	41	40.87	S	106	53	27.07	E
37	-2.694658	106.908835	2	41	40.77	S	106	54	31.81	E
38	-2.69463	106.926818	2	41	40.67	S	106	55	36.54	E
39	-2.694423	107.052694	2	41	39.92	S	107	3	9.70	E
40	-2.676843	106.728968	2	40	36.63	S	106	43	44.28	E
41	-2.676602	106.890824	2	40	35.77	S	106	53	26.97	E
42	-2.676574	106.908807	2	40	35.67	S	106	54	31.71	E
43	-2.676546	106.92679	2	40	35.57	S	106	55	36.44	E
44	-2.676341	107.052664	2	40	34.83	S	107	3	9.59	E
45	-2.67631	107.070646	2	40	34.72	S	107	4	14.33	E
46	-2.67628	107.088627	2	40	34.61	S	107	5	19.06	E
47	-2.658757	106.728943	2	39	31.53	S	106	43	44.19	E
48	-2.658518	106.890796	2	39	30.66	S	106	53	26.87	E
49	-2.65849	106.908779	2	39	30.56	S	106	54	31.60	E
50	-2.658228	107.070615	2	39	29.62	S	107	4	14.21	E
51	-2.658198	107.088596	2	39	29.51	S	107	5	18.95	E
52	-2.640671	106.728918	2	38	26.42	S	106	43	44.10	E
53	-2.640434	106.890769	2	38	25.56	S	106	53	26.77	E
54	-2.640406	106.908751	2	38	25.46	S	106	54	31.50	E
55	-2.640115	107.088566	2	38	24.41	S	107	5	18.84	E
56	-2.640085	107.106546	2	38	24.31	S	107	6	23.57	E
57	-2.640054	107.124526	2	38	24.19	S	107	7	28.29	E
58	-2.62256	106.746877	2	37	21.22	S	106	44	48.76	E
59	-2.622534	106.764861	2	37	21.12	S	106	45	53.50	E
60	-2.622509	106.782844	2	37	21.03	S	106	46	58.24	E
61	-2.622377	106.872759	2	37	20.56	S	106	52	21.93	E
62	-2.622349	106.890742	2	37	20.46	S	106	53	26.67	E
63	-2.622033	107.088536	2	37	19.32	S	107	5	18.73	E
64	-2.622003	107.106516	2	37	19.21	S	107	6	23.46	E
65	-2.621972	107.124496	2	37	19.10	S	107	7	28.19	E
66	-2.604397	106.800802	2	36	15.83	S	106	48	2.89	E
67	-2.60404	107.034565	2	36	14.54	S	107	2	4.43	E
68	-2.60401	107.052546	2	36	14.44	S	107	3	9.17	E
69	-2.603981	107.070526	2	36	14.33	S	107	4	13.89	E
70	-2.603921	107.106486	2	36	14.12	S	107	6	23.35	E
71	-2.603891	107.124465	2	36	14.01	S	107	7	28.07	E
72	-2.60386	107.142445	2	36	13.90	S	107	8	32.80	E
73	-2.585869	107.088476	2	35	9.13	S	107	5	18.51	E
74	-2.585779	107.142414	2	35	8.80	S	107	8	32.69	E
75	-2.585748	107.160393	2	35	8.69	S	107	9	37.41	E
76	-2.56922	105.847471	2	34	9.19	S	105	50	50.90	E
77	-2.567757	107.106426	2	34	3.93	S	107	6	23.13	E
78	-2.567667	107.160363	2	34	3.60	S	107	9	37.31	E
79	-2.551128	105.847459	2	33	4.06	S	105	50	50.85	E
80	-2.551116	105.865448	2	33	4.02	S	105	51	55.61	E
81	-2.551104	105.883438	2	33	3.97	S	105	53	0.38	E
82	-2.549675	107.106396	2	32	58.83	S	107	6	23.03	E
83	-2.549585	107.160332	2	32	58.51	S	107	9	37.20	E
84	-2.533036	105.847447	2	31	58.93	S	105	50	50.81	E
85	-2.532999	105.901414	2	31	58.80	S	105	54	5.09	E
86	-2.53198	106.854646	2	31	55.13	S	106	51	16.73	E
87	-2.531954	106.872627	2	31	55.03	S	106	52	21.46	E
88	-2.531928	106.890608	2	31	54.94	S	106	53	26.19	E
89	-2.515019	105.721513	2	30	54.07	S	105	43	17.45	E
90	-2.515009	105.739502	2	30	54.03	S	105	44	22.21	E
91	-2.514999	105.757491	2	30	54.00	S	105	45	26.97	E
92	-2.514943	105.847436	2	30	53.79	S	105	50	50.77	E
93	-2.514931	105.865424	2	30	53.75	S	105	51	55.53	E
94	-2.514907	105.901402	2	30	53.67	S	105	54	5.05	E
95	-2.514274	106.566898	2	30	51.39	S	106	34	0.83	E
96	-2.514252	106.584882	2	30	51.31	S	106	35	5.58	E
97	-2.513869	106.872601	2	30	49.93	S	106	52	21.36	E
98	-2.513843	106.890582	2	30	49.83	S	106	53	26.10	E
99	-2.496916	105.739492	2	29	48.90	S	105	44	22.17	E
100	-2.496906	105.757481	2	29	48.86	S	105	45	26.93	E
101	-2.496896	105.77547	2	29	48.83	S	105	46	31.69	E
102	-2.496885	105.793458	2	29	48.79	S	105	47	36.45	E
103	-2.496851	105.847424	2	29	48.66	S	105	50	50.73	E
104	-2.496839	105.865413	2	29	48.62	S	105	51	55.49	E
105	-2.496815	105.901389	2	29	48.53	S	105	54	5.00	E
106	-2.49625	106.512925	2	29	46.50	S	106	30	46.53	E
107	-2.496229	106.530909	2	29	46.42	S	106	31	51.27	E
108	-2.496187	106.566877	2	29	46.27	S	106	34	0.76	E
109	-2.496165	106.58486	2	29	46.19	S	106	35	5.50	E
110	-2.495759	106.890556	2	29	44.73	S	106	53	26.00	E
111	-2.478792	105.793447	2	28	43.65	S	105	47	36.41	E
112	-2.478781	105.811436	2	28	43.61	S	105	48	41.17	E

**CATATAN : BERLAKU MULAI 11 AGUSTUS 2020 HINGGA 14 AGUSTUS 2020**

113	-2.47877	105.829424	2	28	43.57	S	105	49	45.93	E
114	-2.478759	105.847413	2	28	43.53	S	105	50	50.69	E
115	-2.478747	105.865401	2	28	43.49	S	105	51	55.44	E
116	-2.478723	105.901377	2	26	43.40	S	105	54	4.96	E
117	-2.47871	105.919365	2	28	43.36	S	105	55	9.71	E
118	-2.478162	106.512904	2	28	41.38	S	106	30	46.45	E
119	-2.478142	106.530888	2	28	41.31	S	106	31	51.20	E
120	-2.478121	106.548872	2	28	41.24	S	106	32	55.94	E
121	-2.478099	106.566855	2	26	41.16	S	106	34	0.68	E
122	-2.477675	106.89053	2	28	39.63	S	106	53	25.91	E
123	-2.477649	106.908511	2	28	39.54	S	106	54	30.64	E
124	-2.460689	105.811425	2	27	38.48	S	105	48	41.13	E
125	-2.460678	105.829413	2	27	38.44	S	105	49	45.89	E
126	-2.460666	105.847401	2	27	38.40	S	105	50	50.64	E
127	-2.460655	105.865389	2	27	38.36	S	105	51	55.40	E
128	-2.460095	106.4949	2	27	36.34	S	106	29	41.64	E
129	-2.460074	106.512884	2	27	36.27	S	106	30	46.38	E
130	-2.45959	106.890505	2	27	34.52	S	106	53	25.82	E
131	-2.459564	106.908485	2	27	34.43	S	106	54	30.55	E
132	-2.442007	106.49488	2	26	31.23	S	106	29	41.57	E
133	-2.441987	106.512864	2	26	31.15	S	106	30	46.31	E
134	-2.441966	106.530847	2	26	31.08	S	106	31	51.05	E
135	-2.423977	106.44091	2	25	26.32	S	106	26	27.28	E
136	-2.423878	106.530827	2	25	25.96	S	106	31	50.98	E
137	-2.423662	106.710649	2	25	25.18	S	106	42	38.34	E
138	-2.42337	106.926413	2	25	24.13	S	106	55	35.09	E
139	-2.423345	106.944392	2	25	24.04	S	106	56	39.81	E
140	-2.406017	106.315003	2	24	21.66	S	106	18	54.01	E
141	-2.405889	106.440891	2	24	21.20	S	106	26	27.21	E
142	-2.405811	106.512824	2	24	20.92	S	106	30	46.17	E
143	-2.40579	106.530806	2	24	20.84	S	106	31	50.90	E
144	-2.405576	106.710626	2	24	20.07	S	106	42	38.25	E
145	-2.405286	106.926388	2	24	19.03	S	106	55	35.00	E
146	-2.405261	106.944367	2	24	18.94	S	106	56	39.72	E
147	-2.405235	106.962345	2	24	18.85	S	106	57	44.44	E
148	-2.387944	106.297001	2	23	16.60	S	106	17	49.20	E
149	-2.387927	106.314985	2	23	16.54	S	106	18	53.95	E
150	-2.38791	106.332969	2	23	16.48	S	106	19	58.69	E
151	-2.387781	106.458855	2	23	16.01	S	106	27	31.88	E
152	-2.387723	106.512804	2	23	15.80	S	106	30	46.09	E
153	-2.387703	106.530786	2	23	15.73	S	106	31	50.83	E
154	-2.387662	106.566751	2	23	15.58	S	106	34	0.30	E
155	-2.387641	106.584733	2	23	15.51	S	106	35	5.04	E
156	-2.38762	106.602715	2	23	15.43	S	106	36	9.77	E
157	-2.387599	106.620697	2	23	15.36	S	106	37	14.51	E
158	-2.387578	106.638679	2	23	15.28	S	106	38	19.24	E
159	-2.387489	106.710604	2	23	14.96	S	106	42	38.17	E
160	-2.387467	106.728585	2	23	14.88	S	106	43	42.91	E
161	-2.387151	106.962319	2	23	13.74	S	106	57	44.35	E
162	-2.369855	106.296984	2	22	11.48	S	106	17	49.14	E
163	-2.369838	106.314968	2	22	11.42	S	106	18	53.88	E
164	-2.36982	106.332952	2	22	11.35	S	106	19	58.63	E
165	-2.369803	106.458836	2	22	10.89	S	106	27	31.81	E
166	-2.369615	106.530766	2	22	10.61	S	106	31	50.76	E
167	-2.369595	106.548749	2	22	10.54	S	106	32	55.50	E
168	-2.369574	106.566731	2	22	10.47	S	106	34	0.23	E
169	-2.369512	106.620676	2	22	10.24	S	106	37	14.43	E
170	-2.369491	106.638657	2	22	10.17	S	106	38	19.17	E
171	-2.369469	106.656639	2	22	10.09	S	106	39	23.90	E
172	-2.369447	106.67462	2	22	10.01	S	106	40	28.63	E
173	-2.369425	106.692601	2	22	9.93	S	106	41	33.36	E
174	-2.369403	106.710582	2	22	9.85	S	106	42	38.10	E
175	-2.369381	106.728562	2	22	9.77	S	106	43	42.82	E
176	-2.369358	106.746543	2	22	9.69	S	106	44	47.55	E
177	-2.369068	106.962294	2	22	8.64	S	106	57	44.26	E
178	-2.369042	106.980272	2	22	8.55	S	106	58	48.98	E
179	-2.369016	106.99825	2	22	8.46	S	106	59	53.70	E
180	-2.351782	106.278983	2	21	6.42	S	106	16	44.34	E
181	-2.351765	106.296967	2	21	6.35	S	106	17	49.08	E
182	-2.351748	106.314951	2	21	6.29	S	106	18	53.82	E
183	-2.351566	106.494782	2	21	5.64	S	106	29	41.22	E
184	-2.351547	106.512764	2	21	5.57	S	106	30	45.95	E
185	-2.351527	106.530747	2	21	5.50	S	106	31	50.69	E
186	-2.351507	106.548729	2	21	5.43	S	106	32	55.42	E
187	-2.351487	106.56671	2	21	5.35	S	106	34	0.16	E
188	-2.351466	106.584692	2	21	5.28	S	106	35	4.89	E
189	-2.351425	106.620655	2	21	5.13	S	106	37	14.36	E
190	-2.351404	106.638636	2	21	5.05	S	106	38	19.09	E
191	-2.351361	106.674598	2	21	4.90	S	106	40	28.55	E
192	-2.351339	106.692579	2	21	4.82	S	106	41	33.28	E
193	-2.35118	106.818439	2	21	4.25	S	106	49	6.38	E
194	-2.351009	106.944291	2	21	3.63	S	106	56	39.45	E
195	-2.350984	106.962269	2	21	3.54	S	106	57	44.17	E
196	-2.333708	106.260983	2	20	1.35	S	106	15	39.54	E
197	-2.333692	106.278967	2	20	1.29	S	106	16	44.28	E
198	-2.333399	106.56669	2	20	0.24	S	106	34	0.08	E
199	-2.333379	106.584672	2	20	0.16	S	106	35	4.82	E
200	-2.333359	106.602653	2	20	0.09	S	106	36	9.55	E
201	-2.333338	106.620634	2	20	0.02	S	106	37	14.28	E
202	-2.333317	106.638615	2	19	59.94	S	106	38	19.01	E
203	-2.333296	106.656596	2	19	59.87	S	106	39	23.75	E
204	-2.333095	106.818416	2	19	59.14	S	106	49	6.30	E
205	-2.333071	106.836395	2	19	59.06	S	106	50	11.02	E
206	-2.332975	106.908309	2	19	58.71	S	106	54	29.91	E
207	-2.33295	106.926288	2	19	58.62	S	106	55	34.64	E
208	-2.3329	106.962243	2	19	58.44	S	106	57	44.07	E
209	-2.315634	106.242983	2	18	56.28	S	106	14	34.74	E
210	-2.315251	106.620614	2	18	54.90	S	106	37	14.21	E
211	-2.315209	106.656575	2	18	54.75	S	106	39	23.67	E
212	-2.31501	106.818393	2	18	54.04	S	106	49	6.21	E
213	-2.314986	106.836372	2	18	53.95	S	106	50	10.94	E
214	-2.314866	106.926263	2	18	53.52	S	106	55	34.55	E
215	-2.314817	106.962218	2	18	53.34	S	106	57	43.98	E
216	-2.314792	106.980196	2	18	53.25	S	106	58	48.71	E
217	-2.314766	106.998173	2	18	53.16	S	106	59	53.42	E
218	-2.314741	107.016115	2	18	53.07	S	107	0	58.14	E
219	-2.296901	106.836348	2	17	48.84	S	106	50	10.85	E
220	-2.278816	106.836325	2	16	43.74	S	106	50	10.77	E
221	-2.243195	106.332834	2	14	35.50	S	106	19	58.20	E
222	-2.243178	106.350816	2	14	35.44	S	106	21	2.94	E
223	-2.243161	106.368799	2	14	35.38	S	106	22	7.68	E
224	-2.243144	106.386781	2	14	35.32	S	106	23	12.41	E
225	-2.225121	106.314836	2	13	30.44	S	106	18	53.41	E
226	-2.225105	106.332818	2	13	30.38	S	106	19	58.14	E
227	-2.225072	106.368782	2	13	30.26	S	106	22	7.62	E
228	-2.225055	106.386764	2	13	30.20	S	106	23	12.35	E

**CATATAN : BERLAKU MULAI 11 AGUSTUS 2020 HINGGA 14 AGUSTUS 2020**

229	-2.207032	106.31482	2	12	25.32	S	106	18	53.35	E
230	-2.207016	106.332802	2	12	25.26	S	106	19	58.09	E
231	-2.206983	106.368765	2	12	25.14	S	106	22	7.55	E
232	-2.206966	106.386747	2	12	25.08	S	106	23	12.29	E
233	-2.188942	106.314804	2	11	20.19	S	106	18	53.29	E
234	-2.18891	106.350767	2	11	20.08	S	106	21	2.76	E
235	-2.170788	106.386713	2	10	14.84	S	106	23	12.17	E
236	-2.170771	106.404694	2	10	14.78	S	106	24	16.90	E
237	-2.152763	106.314773	2	9	9.95	S	106	18	53.18	E
238	-2.152747	106.332754	2	9	9.89	S	106	19	57.91	E
239	-2.152715	106.368716	2	9	9.77	S	106	22	7.38	E
240	-2.152699	106.386697	2	9	9.72	S	106	23	12.11	E
241	-2.152683	106.404678	2	9	9.66	S	106	24	16.84	E
242	-2.152666	106.422658	2	9	9.60	S	106	25	21.57	E
243	-2.152649	106.440639	2	9	9.54	S	106	26	26.30	E
244	-2.152632	106.458619	2	9	9.48	S	106	27	31.03	E
245	-2.152614	106.476599	2	9	9.41	S	106	28	35.76	E
246	-2.134658	106.332738	2	8	4.77	S	106	19	57.86	E
247	-2.134642	106.350719	2	8	4.71	S	106	21	2.59	E
248	-2.134594	106.404661	2	8	4.54	S	106	24	16.78	E
249	-2.134577	106.422642	2	8	4.48	S	106	25	21.51	E
250	-2.134543	106.458602	2	8	4.35	S	106	27	30.97	E
251	-2.134526	106.476582	2	8	4.29	S	106	28	35.70	E
252	-2.116569	106.332723	2	6	59.65	S	106	19	57.80	E
253	-2.116553	106.350704	2	6	59.59	S	106	21	2.53	E