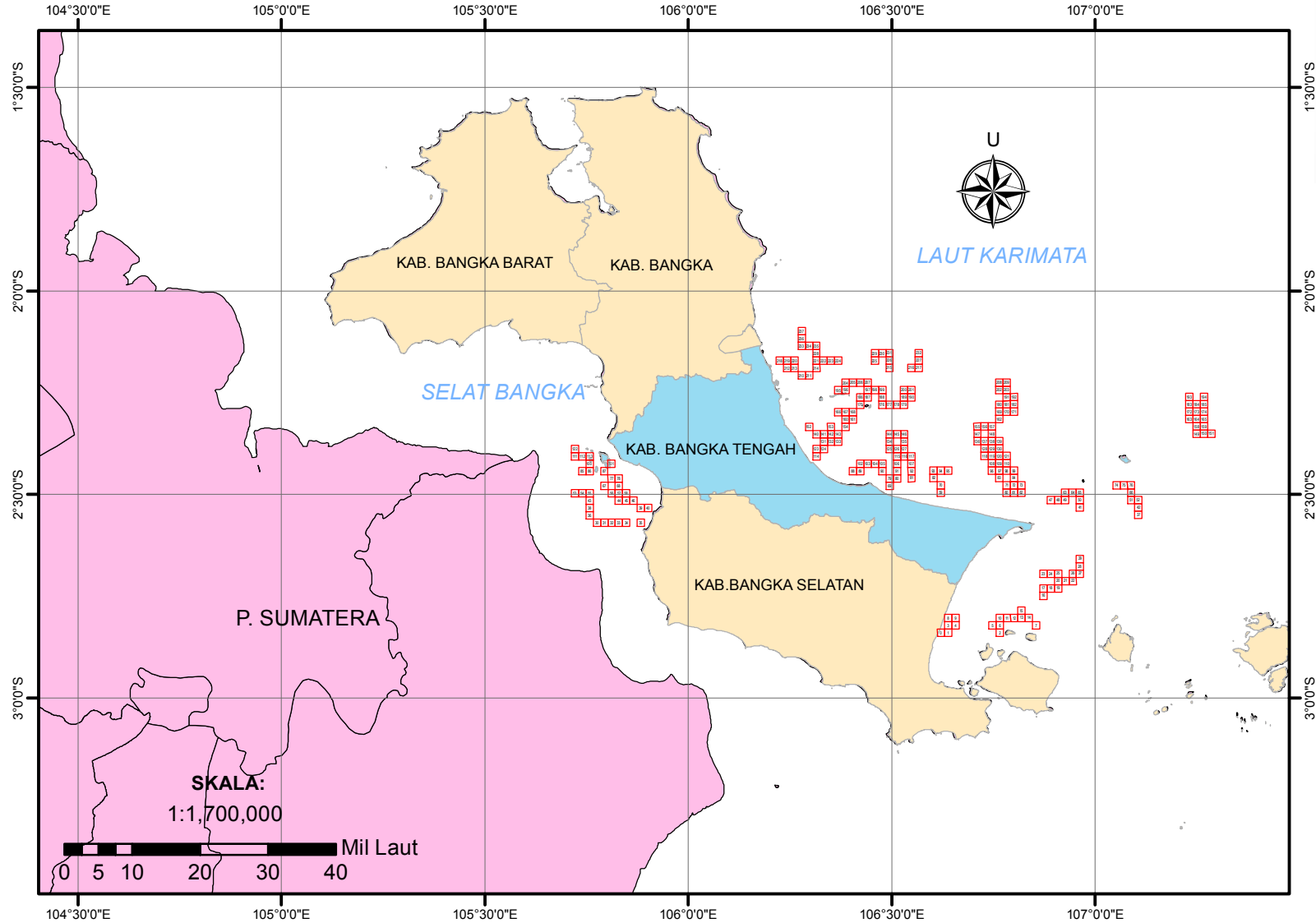
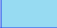





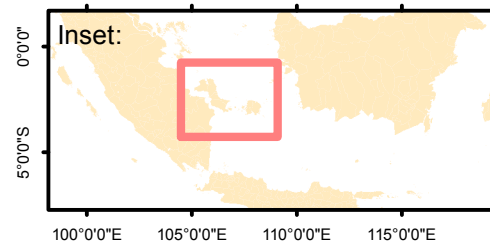


# SISTEM INFORMASI DAERAH POTENSIAL PENANGKAPAN IKAN PERAIRAN KABUPATEN BANGKA TENGAH TANGGAL 14 APRIL 2020



### Legenda:

-  Kab. Bangka Tengah
-  Prov. Bangka Belitung
-  P. Sumatera
-  Daerah Potensial Penangkapan Ikan



Dibuat oleh:  
**Dinas Perikanan  
Kabupaten Bangka Tengah**

- Sumber Data:
1. Data Ocean Color
  2. Data NCEP
  3. Peta RBI Digital

CATATAN : BERLAKU MULAI 14 APRIL 2020 HINGGA 17 APRIL 2020

NO	Lat	Lon	Latitude				Longitude			
	Dec	Dec	DD	MM	SS	Position	DD	MM	SS	Position
0	-2.839773	106.747218	2	50	23.18	S	106	44	49.98	E
1	-2.839747	106.765205	2	50	23.09	S	106	45	54.74	E
2	-2.839561	106.765178	2	50	22.42	S	106	45	54.64	E
3	-2.821661	106.85511	2	49	17.98	S	106	51	18.40	E
4	-2.821635	106.873095	2	49	17.89	S	106	52	23.14	E
5	-2.821503	106.891081	2	49	17.41	S	106	53	27.89	E
6	-2.821476	106.909067	2	49	17.31	S	106	54	32.64	E
7	-2.821335	106.927052	2	49	16.81	S	106	55	37.39	E
8	-2.803574	106.801123	2	48	12.87	S	106	48	4.04	E
9	-2.803549	106.819109	2	48	12.78	S	106	49	8.79	E
10	-2.80339	106.837095	2	48	12.20	S	106	50	13.54	E
11	-2.803363	106.855081	2	48	12.11	S	106	51	18.29	E
12	-2.803335	106.927022	2	48	12.01	S	106	55	37.28	E
13	-2.803307	106.945007	2	48	11.91	S	106	56	42.03	E
14	-2.803279	106.801095	2	48	11.80	S	106	48	3.94	E
15	-2.785222	106.819081	2	47	6.80	S	106	49	8.69	E
16	-2.748968	106.837067	2	44	56.28	S	106	50	13.44	E
17	-2.730884	106.855052	2	43	51.18	S	106	51	18.19	E
18	-2.730855	106.909008	2	43	51.08	S	106	54	32.43	E
19	-2.730827	106.926992	2	43	50.98	S	106	55	37.17	E
20	-2.712743	106.657177	2	42	45.87	S	106	39	25.84	E
21	-2.712714	106.675164	2	42	45.77	S	106	40	30.59	E
22	-2.712685	106.693151	2	42	45.67	S	106	41	35.34	E
23	-2.694715	106.926963	2	41	40.97	S	106	55	37.07	E
24	-2.694687	106.944947	2	41	40.87	S	106	56	41.81	E
25	-2.694658	106.962931	2	41	40.77	S	106	57	46.55	E
26	-2.694601	106.657152	2	41	40.56	S	106	39	25.75	E
27	-2.694572	106.693125	2	41	40.46	S	106	41	35.25	E
28	-2.676489	106.711111	2	40	35.36	S	106	42	40.00	E
29	-2.658405	106.729097	2	39	30.26	S	106	43	44.75	E
30	-2.569266	106.944917	2	34	9.36	S	106	56	41.70	E
31	-2.569255	106.711085	2	34	9.32	S	106	42	39.91	E
32	-2.569244	106.729071	2	34	9.28	S	106	43	44.66	E
33	-2.569232	106.747057	2	34	9.24	S	106	44	49.41	E
34	-2.56922	106.675088	2	34	9.19	S	106	40	30.32	E
35	-2.569196	106.693074	2	34	9.11	S	106	41	35.07	E
36	-2.551184	106.711106	2	33	4.26	S	106	42	39.82	E
37	-2.549675	106.729045	2	32	58.83	S	106	43	44.56	E
38	-2.533092	106.747031	2	31	59.13	S	106	44	49.31	E
39	-2.533011	106.711034	2	31	58.84	S	106	42	39.72	E
40	-2.532999	106.729019	2	31	58.80	S	106	43	44.47	E
41	-2.53182	106.747005	2	31	54.55	S	106	44	49.22	E
42	-2.531593	106.693023	2	31	53.73	S	106	41	34.88	E
43	-2.514999	106.764912	2	30	54.00	S	106	45	53.68	E
44	-2.514955	106.746902	2	30	53.84	S	106	44	48.85	E
45	-2.514943	106.764886	2	30	53.79	S	106	45	53.59	E
46	-2.514931	106.78287	2	30	53.75	S	106	46	58.33	E
47	-2.513843	106.800854	2	30	49.83	S	106	48	3.07	E
48	-2.513817	106.818837	2	30	49.74	S	106	49	7.81	E
49	-2.51379	106.746877	2	30	49.64	S	106	44	48.76	E
50	-2.513737	106.764861	2	30	49.45	S	106	45	53.50	E
51	-2.51354	106.782844	2	30	48.74	S	106	46	58.24	E
52	-2.513511	106.800828	2	30	48.64	S	106	48	2.98	E
53	-2.496927	106.818811	2	29	48.94	S	106	49	7.72	E
54	-2.496916	106.890742	2	29	48.90	S	106	53	26.67	E
55	-2.496906	106.908724	2	29	48.86	S	106	54	31.41	E
56	-2.496874	106.926706	2	29	48.75	S	106	55	36.14	E
57	-2.496863	106.944688	2	29	48.71	S	106	56	40.88	E
58	-2.496851	106.962669	2	29	48.66	S	106	57	45.61	E
59	-2.496121	106.800802	2	29	46.04	S	106	48	2.89	E
60	-2.49591	106.818785	2	29	45.28	S	106	49	7.63	E
61	-2.495886	106.854475	2	29	45.19	S	106	51	17.10	E
62	-2.495861	106.890715	2	29	45.10	S	106	53	26.57	E
63	-2.495706	106.908697	2	29	44.54	S	106	54	31.31	E
64	-2.49568	106.962641	2	29	44.45	S	106	57	45.51	E
65	-2.495653	106.890688	2	29	44.35	S	106	53	26.48	E
66	-2.495458	106.908669	2	29	43.65	S	106	54	31.21	E
67	-2.478792	106.926651	2	28	43.65	S	106	55	35.94	E
68	-2.47877	106.944632	2	28	43.57	S	106	56	40.68	E
69	-2.478183	106.962614	2	28	41.46	S	106	57	45.41	E
70	-2.478034	106.980594	2	28	40.92	S	106	58	50.14	E
71	-2.477825	106.854697	2	28	40.17	S	106	51	16.91	E
72	-2.477801	106.872679	2	28	40.08	S	106	52	21.64	E
73	-2.477776	106.800726	2	28	39.99	S	106	48	2.61	E
74	-2.477432	106.818708	2	28	38.76	S	106	49	7.35	E
75	-2.477404	106.83669	2	28	38.65	S	106	50	12.08	E
76	-2.477376	106.854671	2	28	38.55	S	106	51	16.82	E
77	-2.460689	106.872653	2	27	38.48	S	106	52	21.55	E
78	-2.460678	107.034479	2	27	38.44	S	107	2	4.12	E
79	-2.460095	107.052459	2	27	36.34	S	107	3	8.85	E
80	-2.460074	107.070438	2	27	36.27	S	107	4	13.58	E
81	-2.460033	106.818682	2	27	36.12	S	106	49	7.26	E
82	-2.459969	106.836664	2	27	35.89	S	106	50	11.99	E
83	-2.459764	106.854646	2	27	35.15	S	106	51	16.73	E
84	-2.459715	106.890608	2	27	34.97	S	106	53	26.19	E
85	-2.442638	107.034451	2	26	33.50	S	107	2	4.02	E
86	-2.442628	107.05243	2	26	33.46	S	107	3	8.75	E
87	-2.442607	107.070409	2	26	33.39	S	107	4	13.47	E
88	-2.442104	107.088388	2	26	31.57	S	107	5	18.20	E
89	-2.442085	107.106367	2	26	31.51	S	107	6	22.92	E
90	-2.442027	107.124346	2	26	31.30	S	107	7	27.65	E
91	-2.441987	106.836639	2	26	31.15	S	106	50	11.90	E

CATATAN : BERLAKU MULAI 14 APRIL 2020 HINGGA 17 APRIL 2020

92	-2.441945	106.872601	2	26	31.00	S	106	52	21.36	E
93	-2.441882	106.890582	2	26	30.78	S	106	53	26.10	E
94	-2.44186	106.908563	2	26	30.70	S	106	54	30.83	E
95	-2.441838	107.034423	2	26	30.62	S	107	2	3.92	E
96	-2.441702	107.052402	2	26	30.13	S	107	3	8.65	E
97	-2.441678	107.106338	2	26	30.04	S	107	6	22.82	E
98	-2.441654	107.124316	2	26	29.95	S	107	7	27.54	E
99	-2.44163	107.142294	2	26	29.87	S	107	8	32.26	E
100	-2.424535	107.160272	2	25	28.33	S	107	9	36.98	E
101	-2.424504	106.782669	2	25	28.21	S	106	46	57.61	E
102	-2.423997	106.800651	2	25	26.39	S	106	48	2.34	E
103	-2.423977	106.872575	2	25	26.32	S	106	52	21.27	E
104	-2.423958	106.890556	2	25	26.25	S	106	53	26.00	E
105	-2.423939	106.908537	2	25	26.18	S	106	54	30.73	E
106	-2.423899	107.052374	2	25	26.04	S	107	3	8.55	E
107	-2.423858	107.070352	2	25	25.89	S	107	4	13.27	E
108	-2.423616	107.088331	2	25	25.02	S	107	5	17.99	E
109	-2.423592	107.160243	2	25	24.93	S	107	9	36.87	E
110	-2.423569	107.17822	2	25	24.85	S	107	10	41.59	E
111	-2.406462	106.746682	2	24	23.26	S	106	44	48.06	E
112	-2.406453	106.764663	2	24	23.23	S	106	45	52.79	E
113	-2.406443	106.800626	2	24	23.19	S	106	48	2.25	E
114	-2.406017	106.818607	2	24	21.66	S	106	49	6.99	E
115	-2.405811	106.87255	2	24	20.92	S	106	52	21.18	E
116	-2.40579	106.89053	2	24	20.84	S	106	53	25.91	E
117	-2.40577	107.178191	2	24	20.77	S	107	10	41.49	E
118	-2.405553	106.692713	2	24	19.99	S	106	41	33.77	E
119	-2.40553	106.710695	2	24	19.91	S	106	42	38.50	E
120	-2.405507	106.746658	2	24	19.83	S	106	44	47.97	E
121	-2.405483	106.76464	2	24	19.74	S	106	45	52.70	E
122	-2.388369	106.800602	2	23	18.13	S	106	48	2.17	E
123	-2.387927	106.818583	2	23	16.54	S	106	49	6.90	E
124	-2.38791	106.872525	2	23	16.48	S	106	52	21.09	E
125	-2.387742	107.178161	2	23	15.87	S	107	10	41.38	E
126	-2.387723	107.196138	2	23	15.80	S	107	11	46.10	E
127	-2.387703	106.674708	2	23	15.73	S	106	40	28.95	E
128	-2.387467	106.69269	2	23	14.88	S	106	41	33.68	E
129	-2.387444	106.710672	2	23	14.80	S	106	42	38.42	E
130	-2.387421	106.728653	2	23	14.72	S	106	43	43.15	E
131	-2.36982	106.746635	2	22	11.35	S	106	44	47.89	E
132	-2.369803	106.764616	2	22	11.29	S	106	45	52.62	E
133	-2.369785	106.818558	2	22	11.23	S	106	49	6.81	E
134	-2.369654	106.836539	2	22	10.75	S	106	50	11.54	E
135	-2.369615	106.854519	2	22	10.61	S	106	51	16.27	E
136	-2.369403	106.872499	2	22	9.85	S	106	52	21.00	E
137	-2.369381	106.890479	2	22	9.77	S	106	53	25.72	E
138	-2.369358	107.196108	2	22	9.69	S	107	11	45.99	E
139	-2.369335	107.214085	2	22	9.61	S	107	12	50.71	E
140	-2.351748	106.584775	2	21	6.29	S	106	35	5.19	E
141	-2.351731	106.674686	2	21	6.23	S	106	40	28.87	E
142	-2.351714	106.692667	2	21	6.17	S	106	41	33.60	E
143	-2.351696	106.710649	2	21	6.11	S	106	42	38.34	E
144	-2.351566	106.746611	2	21	5.64	S	106	44	47.80	E
145	-2.351547	106.836515	2	21	5.57	S	106	50	11.45	E
146	-2.351527	106.854495	2	21	5.50	S	106	51	16.18	E
147	-2.351317	107.088218	2	21	4.74	S	107	5	17.58	E
148	-2.351272	107.214055	2	21	4.58	S	107	12	50.60	E
149	-2.350548	106.584754	2	21	1.97	S	106	35	5.11	E
150	-2.350518	106.674664	2	21	1.86	S	106	40	28.79	E
151	-2.350489	106.692645	2	21	1.76	S	106	41	33.52	E
152	-2.333676	106.83649	2	20	1.23	S	106	50	11.36	E
153	-2.333624	106.85447	2	20	1.05	S	106	51	16.09	E
154	-2.333589	107.106168	2	20	0.92	S	107	6	22.20	E
155	-2.333231	107.214026	2	19	59.63	S	107	12	50.49	E
156	-2.333209	106.368937	2	19	59.55	S	106	22	8.17	E
157	-2.333186	106.386921	2	19	59.47	S	106	23	12.92	E
158	-2.332467	106.566751	2	19	56.88	S	106	34	0.30	E
159	-2.332438	107.070186	2	19	56.78	S	107	4	12.67	E
160	-2.3155	107.10614	2	18	55.80	S	107	6	22.10	E
161	-2.315482	107.178046	2	18	55.74	S	107	10	40.97	E
162	-2.315078	107.196021	2	18	54.28	S	107	11	45.68	E
163	-2.314416	107.213997	2	18	51.90	S	107	12	50.39	E
164	-2.314387	106.314968	2	18	51.79	S	106	18	53.88	E
165	-2.314358	106.350936	2	18	51.69	S	106	21	3.37	E
166	-2.297429	106.36892	2	17	50.74	S	106	22	8.11	E
167	-2.297411	106.386903	2	17	50.68	S	106	23	12.85	E
168	-2.297394	106.512784	2	17	50.62	S	106	30	46.02	E
169	-2.296992	106.530766	2	17	49.17	S	106	31	50.76	E
170	-2.29697	106.548749	2	17	49.09	S	106	32	55.50	E
171	-2.296947	106.566731	2	17	49.01	S	106	34	0.23	E
172	-2.296335	107.052182	2	17	46.81	S	107	3	7.86	E
173	-2.296307	107.106113	2	17	46.71	S	107	6	22.01	E
174	-2.296278	107.178017	2	17	46.60	S	107	10	40.86	E
175	-2.279287	107.195993	2	16	45.43	S	107	11	45.57	E
176	-2.279232	106.278983	2	16	45.24	S	106	16	44.34	E
177	-2.279214	106.296967	2	16	45.17	S	106	17	49.08	E
178	-2.279195	106.314951	2	16	45.10	S	106	18	53.82	E
179	-2.279176	106.332935	2	16	45.03	S	106	19	58.57	E
180	-2.278907	106.350918	2	16	44.07	S	106	21	3.30	E
181	-2.278884	106.368902	2	16	43.98	S	106	22	8.05	E
182	-2.278862	106.386885	2	16	43.90	S	106	23	12.79	E
183	-2.278255	106.512764	2	16	41.72	S	106	30	45.95	E
184	-2.278226	107.070132	2	16	41.61	S	107	4	12.48	E
185	-2.278198	107.106085	2	16	41.51	S	107	6	21.91	E
186	-2.261198	107.177989	2	15	40.31	S	107	10	40.76	E

CATATAN : BERLAKU MULAI 14 APRIL 2020 HINGGA 17 APRIL 2020

187	-2.26118	107.195964	2	15	40.25	S	107	11	45.47	E
188	-2.261144	107.231914	2	15	40.12	S	107	13	54.89	E
189	-2.261088	107.249889	2	15	39.92	S	107	14	59.60	E
190	-2.261069	106.260983	2	15	39.85	S	106	15	39.54	E
191	-2.260799	106.278967	2	15	38.88	S	106	16	44.28	E
192	-2.260777	106.296951	2	15	38.80	S	106	17	49.02	E
193	-2.260174	106.314934	2	15	36.63	S	106	18	53.76	E
194	-2.260118	106.368884	2	15	36.42	S	106	22	7.98	E
195	-2.243161	106.386867	2	14	35.38	S	106	23	12.72	E
196	-2.243144	106.494763	2	14	35.32	S	106	29	41.15	E
197	-2.243092	106.512745	2	14	35.13	S	106	30	45.88	E
198	-2.243074	107.070106	2	14	35.07	S	107	4	12.38	E
199	-2.243056	107.088082	2	14	35.00	S	107	5	17.10	E
200	-2.243	107.106058	2	14	34.80	S	107	6	21.81	E
201	-2.242981	107.159986	2	14	34.73	S	107	9	35.95	E
202	-2.242735	107.177961	2	14	33.85	S	107	10	40.66	E
203	-2.242713	107.231886	2	14	33.77	S	107	13	54.79	E
204	-2.225055	107.24986	2	13	30.20	S	107	14	59.50	E
205	-2.225038	106.260967	2	13	30.14	S	106	15	39.48	E
206	-2.225021	106.278951	2	13	30.08	S	106	16	44.22	E
207	-2.225003	106.296934	2	13	30.01	S	106	17	48.96	E
208	-2.22465	106.314918	2	13	28.74	S	106	18	53.70	E
209	-2.224628	106.332901	2	13	28.66	S	106	19	58.44	E
210	-2.207063	106.908285	2	12	25.43	S	106	54	29.83	E
211	-2.207048	106.926263	2	12	25.37	S	106	55	34.55	E
212	-2.189004	106.944241	2	11	20.41	S	106	56	39.27	E
213	-2.188989	106.962218	2	11	20.36	S	106	57	43.98	E
214	-2.188942	107.141983	2	11	20.19	S	107	8	31.14	E
215	-2.188773	107.159958	2	11	19.58	S	107	9	35.85	E
216	-2.188718	107.195908	2	11	19.38	S	107	11	45.27	E
217	-2.188699	107.213883	2	11	19.32	S	107	12	49.98	E
218	-2.170929	107.231857	2	10	15.34	S	107	13	54.69	E
219	-2.170914	107.249832	2	10	15.29	S	107	14	59.40	E
220	-2.170899	106.242968	2	10	15.24	S	106	14	34.68	E
221	-2.170853	106.260951	2	10	15.07	S	106	15	39.42	E
222	-2.170837	106.332884	2	10	15.01	S	106	19	58.38	E
223	-2.170821	106.890283	2	10	14.96	S	106	53	25.02	E
224	-2.170805	106.908261	2	10	14.90	S	106	54	29.74	E
225	-2.17072	106.926239	2	10	14.59	S	106	55	34.46	E
226	-2.170685	106.944216	2	10	14.47	S	106	56	39.18	E
227	-2.170612	107.123981	2	10	14.20	S	107	7	26.33	E
228	-2.152763	107.141956	2	9	9.95	S	107	8	31.04	E
229	-2.152632	107.195881	2	9	9.48	S	107	11	45.17	E
230	-2.152614	107.213855	2	9	9.41	S	107	12	49.88	E
231	-2.152597	107.231829	2	9	9.35	S	107	13	54.58	E
232	-2.152524	106.278918	2	9	9.09	S	106	16	44.10	E
233	-2.134704	106.296902	2	8	4.93	S	106	17	48.85	E
234	-2.134689	106.314884	2	8	4.88	S	106	18	53.58	E
235	-2.134674	106.332867	2	8	4.83	S	106	19	58.32	E
236	-2.116614	106.494706	2	6	59.81	S	106	29	40.94	E
237	-2.098524	106.638553	2	5	54.69	S	106	38	18.79	E