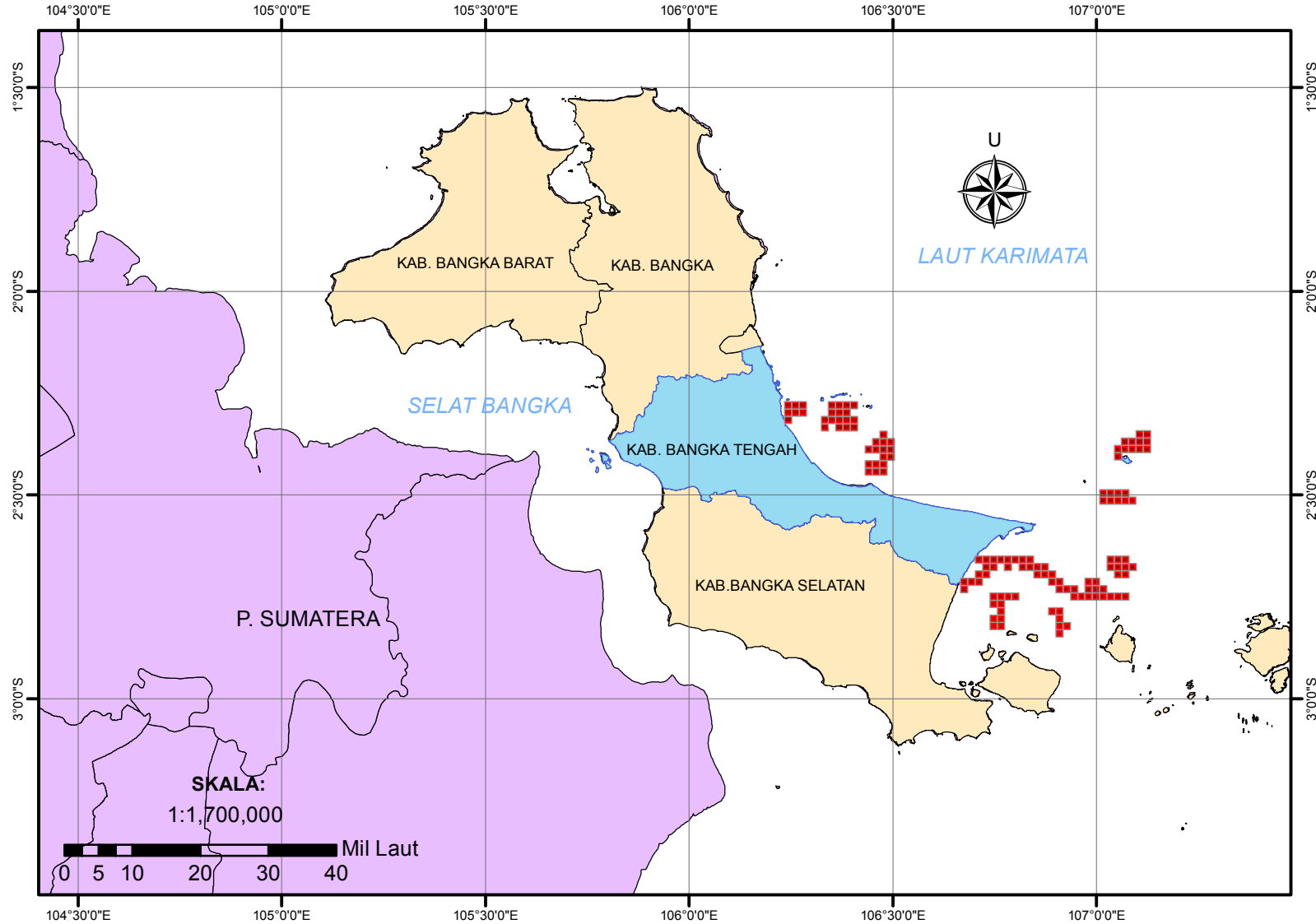




# SISTEM INFORMASI DAERAH POTENSIAL PENANGKAPAN IKAN PERAIRAN KABUPATEN BANGKA TENGAH TANGGAL 20 DESEMBER 2019



### Legenda:

- Kab. Bangka Tengah
- Prov. Bangka Belitung
- P. Sumatera
- Daerah Potensial Penangkapan Ikan



Dibuat oleh:  
**Dinas Perikanan  
Kabupaten Bangka Tengah**

- Sumber Data:
1. Data Ocean Color
  2. Data NCEP
  3. Peta RBI Dijital

NO	Lat(y)	Lon(x)	Latitude				Longitude			
	Dec	Dec	DD	MM	SS	Position	DD	MM	SS	Position
0	-2.839331	106.909067	2	50	21.59	S	106	54	32.64	E
1	-2.821503	106.747164	2	49	17.41	S	106	44	49.79	E
2	-2.821476	106.76515	2	49	17.31	S	106	45	54.54	E
3	-2.821247	106.909037	2	49	16.49	S	106	54	32.53	E
4	-2.821217	106.927022	2	49	16.38	S	106	55	37.28	E
5	-2.803417	106.747137	2	48	12.30	S	106	44	49.69	E
6	-2.80339	106.765123	2	48	12.20	S	106	45	54.44	E
7	-2.803163	106.909008	2	48	11.39	S	106	54	32.43	E
8	-2.785304	106.765096	2	47	7.09	S	106	45	54.35	E
9	-2.785108	106.890994	2	47	6.39	S	106	53	27.58	E
10	-2.785079	106.908978	2	47	6.28	S	106	54	32.32	E
11	-2.767246	106.747083	2	46	2.09	S	106	44	49.50	E
12	-2.767219	106.765069	2	46	1.99	S	106	45	54.25	E
13	-2.74916	106.747057	2	44	56.98	S	106	44	49.41	E
14	-2.749133	106.765042	2	44	56.88	S	106	45	54.15	E
15	-2.749106	106.783028	2	44	56.78	S	106	46	58.90	E
16	-2.749079	106.801013	2	44	56.68	S	106	48	3.65	E
17	-2.748852	106.944888	2	44	55.87	S	106	56	41.60	E
18	-2.748823	106.962872	2	44	55.76	S	106	57	46.34	E
19	-2.748793	106.980855	2	44	55.65	S	106	58	51.08	E
20	-2.748763	106.998838	2	44	55.55	S	106	59	55.82	E
21	-2.748732	107.016821	2	44	55.44	S	107	1	0.56	E
22	-2.748702	107.034804	2	44	55.33	S	107	2	5.29	E
23	-2.748671	107.052786	2	44	55.22	S	107	3	10.03	E
24	-2.74864	107.070769	2	44	55.10	S	107	4	14.77	E
25	-2.731177	106.675088	2	43	52.24	S	106	40	30.32	E
26	-2.730827	106.908892	2	43	50.98	S	106	54	32.01	E
27	-2.730798	106.926875	2	43	50.87	S	106	55	36.75	E
28	-2.730769	106.944859	2	43	50.77	S	106	56	41.49	E
29	-2.73071	106.980825	2	43	50.56	S	106	58	50.97	E
30	-2.73068	106.998808	2	43	50.45	S	106	59	55.71	E
31	-2.73065	107.016791	2	43	50.34	S	107	1	0.45	E
32	-2.713091	106.675063	2	42	47.13	S	106	40	30.23	E
33	-2.713066	106.693049	2	42	47.04	S	106	41	34.98	E
34	-2.71304	106.711034	2	42	46.94	S	106	42	39.72	E
35	-2.712771	106.89088	2	42	45.98	S	106	53	27.17	E
36	-2.712743	106.908863	2	42	45.87	S	106	54	31.91	E
37	-2.712626	106.980796	2	42	45.45	S	106	58	50.87	E
38	-2.712597	106.998778	2	42	45.35	S	106	59	55.60	E
39	-2.694954	106.711009	2	41	41.83	S	106	42	39.63	E
40	-2.694928	106.728994	2	41	41.74	S	106	43	44.38	E
41	-2.694742	106.854885	2	41	41.07	S	106	51	17.59	E
42	-2.694715	106.872868	2	41	40.97	S	106	52	22.32	E
43	-2.694687	106.890852	2	41	40.87	S	106	53	27.07	E
44	-2.694423	107.052694	2	41	39.92	S	107	3	9.70	E
45	-2.694393	107.070676	2	41	39.81	S	107	4	14.43	E
46	-2.676843	106.728968	2	40	36.63	S	106	43	44.28	E
47	-2.676817	106.746953	2	40	36.54	S	106	44	49.03	E
48	-2.676765	106.782922	2	40	36.35	S	106	46	58.52	E
49	-2.676712	106.81889	2	40	36.16	S	106	49	8.00	E
50	-2.676685	106.836874	2	40	36.07	S	106	50	12.75	E
51	-2.676658	106.854857	2	40	35.97	S	106	51	17.49	E
52	-2.67663	106.872841	2	40	35.87	S	106	52	22.23	E
53	-2.676371	107.034683	2	40	34.94	S	107	2	4.86	E
54	-2.676341	107.052664	2	40	34.83	S	107	3	9.59	E
55	-2.67631	107.070646	2	40	34.72	S	107	4	14.33	E
56	-2.67628	107.088627	2	40	34.61	S	107	5	19.06	E
57	-2.658782	106.710959	2	39	31.62	S	106	42	39.45	E
58	-2.658757	106.728943	2	39	31.53	S	106	43	44.19	E
59	-2.658731	106.746928	2	39	31.43	S	106	44	48.94	E
60	-2.658705	106.764912	2	39	31.34	S	106	45	53.68	E
61	-2.658679	106.782896	2	39	31.24	S	106	46	58.43	E
62	-2.658653	106.80088	2	39	31.15	S	106	48	3.17	E
63	-2.658627	106.818863	2	39	31.06	S	106	49	7.91	E

64	-2.6586	106.836847	2	39	30.96	S	106	50	12.65	E
65	-2.658288	107.034653	2	39	29.84	S	107	2	4.75	E
66	-2.658258	107.052634	2	39	29.73	S	107	3	9.48	E
67	-2.658228	107.070615	2	39	29.62	S	107	4	14.21	E
68	-2.513654	107.016443	2	30	49.15	S	107	0	59.19	E
69	-2.513626	107.034423	2	30	49.05	S	107	2	3.92	E
70	-2.513598	107.052402	2	30	48.95	S	107	3	8.65	E
71	-2.513569	107.070381	2	30	48.85	S	107	4	13.37	E
72	-2.51354	107.088359	2	30	48.74	S	107	5	18.09	E
73	-2.495571	107.016416	2	29	44.06	S	107	0	59.10	E
74	-2.495543	107.034395	2	29	43.95	S	107	2	3.82	E
75	-2.495515	107.052374	2	29	43.85	S	107	3	8.55	E
76	-2.495487	107.070352	2	29	43.75	S	107	4	13.27	E
77	-2.442066	106.440929	2	26	31.44	S	106	26	27.34	E
78	-2.442047	106.458913	2	26	31.37	S	106	27	32.09	E
79	-2.442027	106.476897	2	26	31.30	S	106	28	36.83	E
80	-2.423977	106.44091	2	25	26.32	S	106	26	27.28	E
81	-2.423958	106.458893	2	25	26.25	S	106	27	32.01	E
82	-2.423939	106.476877	2	25	26.18	S	106	28	36.76	E
83	-2.40585	106.476857	2	24	21.06	S	106	28	36.69	E
84	-2.405831	106.494841	2	24	20.99	S	106	29	41.43	E
85	-2.405102	107.052236	2	24	18.37	S	107	3	8.05	E
86	-2.3878	106.440872	2	23	16.08	S	106	26	27.14	E
87	-2.387781	106.458855	2	23	16.01	S	106	27	31.88	E
88	-2.387762	106.476838	2	23	15.94	S	106	28	36.62	E
89	-2.387742	106.494821	2	23	15.87	S	106	29	41.36	E
90	-2.387019	107.052209	2	23	13.27	S	107	3	7.95	E
91	-2.386992	107.070186	2	23	13.17	S	107	4	12.67	E
92	-2.386965	107.088163	2	23	13.07	S	107	5	17.39	E
93	-2.386937	107.10614	2	23	12.97	S	107	6	22.10	E
94	-2.386909	107.124117	2	23	12.87	S	107	7	26.82	E
95	-2.369693	106.458836	2	22	10.89	S	106	27	31.81	E
96	-2.369674	106.476819	2	22	10.83	S	106	28	36.55	E
97	-2.369654	106.494801	2	22	10.75	S	106	29	41.28	E
98	-2.36891	107.070159	2	22	8.08	S	107	4	12.57	E
99	-2.368883	107.088136	2	22	7.98	S	107	5	17.29	E
100	-2.368855	107.106113	2	22	7.88	S	107	6	22.01	E
101	-2.368828	107.124089	2	22	7.78	S	107	7	26.72	E
102	-2.351585	106.4768	2	21	5.71	S	106	28	36.48	E
103	-2.350773	107.106085	2	21	2.78	S	107	6	21.91	E
104	-2.350746	107.124062	2	21	2.69	S	107	7	26.62	E
105	-2.333642	106.332918	2	20	1.11	S	106	19	58.50	E
106	-2.333607	106.368884	2	20	0.99	S	106	22	7.98	E
107	-2.333589	106.386867	2	20	0.92	S	106	23	12.72	E
108	-2.333571	106.40485	2	20	0.86	S	106	24	17.46	E
109	-2.315634	106.242983	2	18	56.28	S	106	14	34.74	E
110	-2.315552	106.332901	2	18	55.99	S	106	19	58.44	E
111	-2.315535	106.350884	2	18	55.93	S	106	21	3.18	E
112	-2.315518	106.368867	2	18	55.86	S	106	22	7.92	E
113	-2.3155	106.38685	2	18	55.80	S	106	23	12.66	E
114	-2.315482	106.404832	2	18	55.74	S	106	24	17.40	E
115	-2.297544	106.242968	2	17	51.16	S	106	14	34.68	E
116	-2.297529	106.260951	2	17	51.10	S	106	15	39.42	E
117	-2.297512	106.278935	2	17	51.04	S	106	16	44.17	E
118	-2.297446	106.350867	2	17	50.81	S	106	21	3.12	E
119	-2.297429	106.36885	2	17	50.74	S	106	22	7.86	E
120	-2.297411	106.386832	2	17	50.68	S	106	23	12.60	E
121	-2.279454	106.242952	2	16	46.03	S	106	14	34.63	E
122	-2.279439	106.260935	2	16	45.98	S	106	15	39.37	E
123	-2.279423	106.278918	2	16	45.92	S	106	16	44.10	E
124	-2.279357	106.35085	2	16	45.69	S	106	21	3.06	E
125	-2.27934	106.368832	2	16	45.62	S	106	22	7.80	E
126	-2.279322	106.386815	2	16	45.56	S	106	23	12.53	E
127	-2.279305	106.404797	2	16	45.50	S	106	24	17.27	E

**CATATAN :**

BERLAKU MULAI TANGGAL 20 DESEMBER 2019 HINGGA 24 DESEMBER 2019