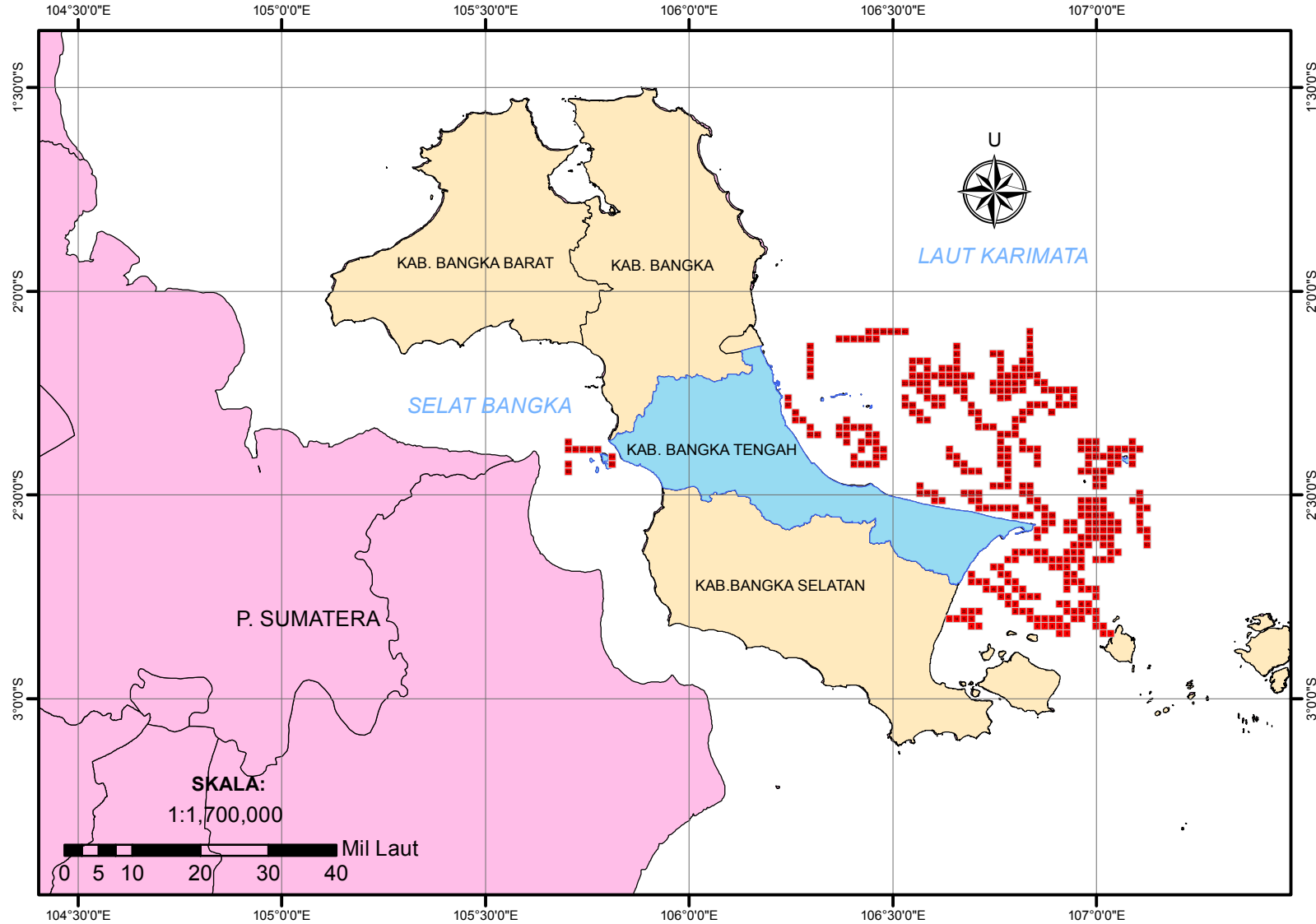
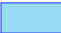
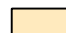
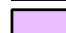



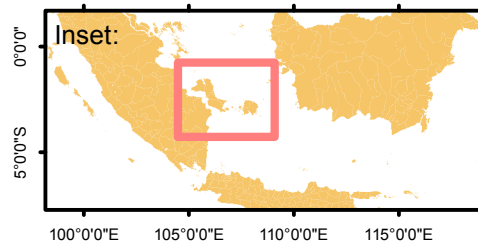


# SISTEM INFORMASI DAERAH POTENSIAL PENANGKAPAN IKAN PERAIRAN KABUPATEN BANGKA TENGAH TANGGAL 21 FEBRUARI 2020



### Legenda:

-  Kab. Bangka Tengah
-  Prov. Bangka Belitung
-  P. Sumatera
-  Daerah Potensial Penangkapan Ikan



Dibuat oleh:  
**Dinas Perikanan  
Kabupaten Bangka Tengah**

- Sumber Data:
1. Data Ocean Color
  2. Data NCEP
  3. Peta RBI Dijital

**CATATAN : BERLAKU MULAI 21 FEBRUARI 2020 HINGGA 25 FEBRUARI 2020**

NO	Lat	Lon	Latitude				Longitude			
	Dec	Dec	DD	MM	SS	Position	DD	MM	SS	Position
0	-2.839331	106.909067	2	50	21.59	S	106	54	32.64	E
1	-2.839301	106.927052	2	50	21.48	S	106	55	37.39	E
2	-2.839147	107.016975	2	50	20.93	S	107	1	1.11	E
3	-2.839115	107.034959	2	50	20.81	S	107	2	5.85	E
4	-2.821583	106.693203	2	49	17.70	S	106	41	35.53	E
5	-2.821557	106.71119	2	49	17.61	S	106	42	40.28	E
6	-2.821335	106.855081	2	49	16.81	S	106	51	18.29	E
7	-2.821306	106.873066	2	49	16.70	S	106	52	23.04	E
8	-2.821277	106.891052	2	49	16.60	S	106	53	27.79	E
9	-2.821247	106.909037	2	49	16.49	S	106	54	32.53	E
10	-2.821217	106.927022	2	49	16.38	S	106	55	37.28	E
11	-2.821095	106.99896	2	49	15.94	S	106	59	56.26	E
12	-2.821064	107.016944	2	49	15.83	S	107	1	1.00	E
13	-2.803574	106.639215	2	48	12.87	S	106	38	21.17	E
14	-2.803549	106.657202	2	48	12.78	S	106	39	25.93	E
15	-2.803523	106.675189	2	48	12.68	S	106	40	30.68	E
16	-2.803497	106.693176	2	48	12.59	S	106	41	35.43	E
17	-2.803279	106.837067	2	48	11.80	S	106	50	13.44	E
18	-2.80325	106.855052	2	48	11.70	S	106	51	18.19	E
19	-2.803221	106.873038	2	48	11.60	S	106	52	22.94	E
20	-2.803192	106.891023	2	48	11.49	S	106	53	27.68	E
21	-2.803163	106.909008	2	48	11.39	S	106	54	32.43	E
22	-2.803104	106.944977	2	48	11.17	S	106	56	41.92	E
23	-2.803073	106.962961	2	48	11.06	S	106	57	46.66	E
24	-2.803012	106.998929	2	48	10.84	S	106	59	56.14	E
25	-2.785436	106.675164	2	47	7.57	S	106	40	30.59	E
26	-2.785411	106.693151	2	47	7.48	S	106	41	35.34	E
27	-2.785384	106.711137	2	47	7.38	S	106	42	40.09	E
28	-2.78525	106.801068	2	47	6.90	S	106	48	3.84	E
29	-2.785222	106.819053	2	47	6.80	S	106	49	8.59	E
30	-2.785194	106.837039	2	47	6.70	S	106	50	13.34	E
31	-2.78505	106.926963	2	47	6.18	S	106	55	37.07	E
32	-2.78502	106.944947	2	47	6.07	S	106	56	41.81	E
33	-2.78499	106.962931	2	47	5.96	S	106	57	46.55	E
34	-2.78496	106.980915	2	47	5.86	S	106	58	51.29	E
35	-2.784929	106.998899	2	47	5.74	S	106	59	56.04	E
36	-2.767192	106.783055	2	46	1.89	S	106	46	59.00	E
37	-2.767165	106.80104	2	46	1.79	S	106	48	3.74	E
38	-2.766995	106.908949	2	46	1.18	S	106	54	32.22	E
39	-2.766966	106.926933	2	46	1.08	S	106	55	36.96	E
40	-2.766906	106.962901	2	46	0.86	S	106	57	46.44	E
41	-2.766876	106.980885	2	46	0.75	S	106	58	51.19	E
42	-2.749133	106.765042	2	44	56.88	S	106	45	54.15	E
43	-2.749106	106.783028	2	44	56.78	S	106	46	58.90	E
44	-2.749052	106.818998	2	44	56.59	S	106	49	8.39	E
45	-2.749024	106.836983	2	44	56.49	S	106	50	13.14	E
46	-2.748996	106.854968	2	44	56.39	S	106	51	17.88	E
47	-2.748763	106.998838	2	44	55.55	S	106	59	55.82	E
48	-2.7311	106.729045	2	43	51.96	S	106	43	44.56	E
49	-2.731074	106.747031	2	43	51.87	S	106	44	49.31	E
50	-2.731048	106.765016	2	43	51.77	S	106	45	54.06	E
51	-2.730994	106.800986	2	43	51.58	S	106	48	3.55	E
52	-2.730967	106.818971	2	43	51.48	S	106	49	8.30	E
53	-2.730798	106.926875	2	43	50.87	S	106	55	36.75	E
54	-2.730739	106.962842	2	43	50.66	S	106	57	46.23	E
55	-2.73071	106.980825	2	43	50.56	S	106	58	50.97	E
56	-2.73068	106.998808	2	43	50.45	S	106	59	55.71	E
57	-2.713066	106.693049	2	42	47.04	S	106	41	34.98	E
58	-2.71304	106.711034	2	42	46.94	S	106	42	39.72	E
59	-2.713014	106.729019	2	42	46.85	S	106	43	44.47	E
60	-2.712936	106.782974	2	42	46.57	S	106	46	58.71	E
61	-2.712909	106.800959	2	42	46.47	S	106	48	3.45	E
62	-2.712714	106.926847	2	42	45.77	S	106	55	36.65	E

**CATATAN : BERLAKU MULAI 21 FEBRUARI 2020 HINGGA 25 FEBRUARI 2020**

63	-2.712685	106.94483	2	42	45.67	S	106	56	41.39	E
64	-2.712656	106.962813	2	42	45.56	S	106	57	46.13	E
65	-2.694979	106.693023	2	41	41.92	S	106	41	34.88	E
66	-2.694877	106.764963	2	41	41.56	S	106	45	53.87	E
67	-2.69485	106.782948	2	41	41.46	S	106	46	58.61	E
68	-2.69463	106.926818	2	41	40.67	S	106	55	36.54	E
69	-2.694601	106.944801	2	41	40.56	S	106	56	41.28	E
70	-2.676817	106.746953	2	40	36.54	S	106	44	49.03	E
71	-2.676791	106.764938	2	40	36.45	S	106	45	53.78	E
72	-2.676602	106.890824	2	40	35.77	S	106	53	26.97	E
73	-2.676574	106.908807	2	40	35.67	S	106	54	31.71	E
74	-2.676546	106.92679	2	40	35.57	S	106	55	36.44	E
75	-2.676489	106.962755	2	40	35.36	S	106	57	45.92	E
76	-2.658679	106.782896	2	39	31.24	S	106	46	58.43	E
77	-2.658653	106.80088	2	39	31.15	S	106	48	3.17	E
78	-2.658573	106.85483	2	39	30.86	S	106	51	17.39	E
79	-2.658546	106.872813	2	39	30.77	S	106	52	22.13	E
80	-2.658518	106.890796	2	39	30.66	S	106	53	26.87	E
81	-2.65849	106.908779	2	39	30.56	S	106	54	31.60	E
82	-2.658462	106.926762	2	39	30.46	S	106	55	36.34	E
83	-2.658434	106.944744	2	39	30.36	S	106	56	41.08	E
84	-2.658405	106.962726	2	39	30.26	S	106	57	45.81	E
85	-2.658347	106.99869	2	39	30.05	S	106	59	55.28	E
86	-2.658318	107.016672	2	39	29.94	S	107	1	0.02	E
87	-2.658288	107.034653	2	39	29.84	S	107	2	4.75	E
88	-2.640568	106.800854	2	38	26.04	S	106	48	3.07	E
89	-2.640542	106.818837	2	38	25.95	S	106	49	7.81	E
90	-2.640515	106.83682	2	38	25.85	S	106	50	12.55	E
91	-2.640488	106.854803	2	38	25.76	S	106	51	17.29	E
92	-2.640461	106.872786	2	38	25.66	S	106	52	22.03	E
93	-2.640378	106.926734	2	38	25.36	S	106	55	36.24	E
94	-2.64035	106.944716	2	38	25.26	S	106	56	40.98	E
95	-2.640322	106.962698	2	38	25.16	S	106	57	45.71	E
96	-2.640205	107.034624	2	38	24.74	S	107	2	4.65	E
97	-2.640176	107.052605	2	38	24.63	S	107	3	9.38	E
98	-2.622266	106.944688	2	37	20.16	S	106	56	40.88	E
99	-2.622238	106.962669	2	37	20.06	S	106	57	45.61	E
100	-2.62221	106.980651	2	37	19.96	S	106	58	50.34	E
101	-2.622152	107.016613	2	37	19.75	S	107	0	59.81	E
102	-2.622123	107.034594	2	37	19.64	S	107	2	4.54	E
103	-2.621972	107.124496	2	37	19.10	S	107	7	28.19	E
104	-2.604319	106.85475	2	36	15.55	S	106	51	17.10	E
105	-2.604154	106.962641	2	36	14.95	S	106	57	45.51	E
106	-2.604126	106.980623	2	36	14.85	S	106	58	50.24	E
107	-2.604098	106.998604	2	36	14.75	S	106	59	54.97	E
108	-2.604069	107.016584	2	36	14.65	S	107	0	59.70	E
109	-2.60404	107.034565	2	36	14.54	S	107	2	4.43	E
110	-2.603891	107.124465	2	36	14.01	S	107	7	28.07	E
111	-2.586234	106.854724	2	35	10.44	S	106	51	17.01	E
112	-2.586208	106.872706	2	35	10.35	S	106	52	21.74	E
113	-2.586126	106.926651	2	35	10.05	S	106	55	35.94	E
114	-2.586099	106.944632	2	35	9.96	S	106	56	40.68	E
115	-2.586043	106.980594	2	35	9.75	S	106	58	50.14	E
116	-2.586014	106.998575	2	35	9.65	S	106	59	54.87	E
117	-2.585986	107.016556	2	35	9.55	S	107	0	59.60	E
118	-2.585957	107.034536	2	35	9.45	S	107	2	4.33	E
119	-2.585928	107.052516	2	35	9.34	S	107	3	9.06	E
120	-2.585839	107.106456	2	35	9.02	S	107	6	23.24	E
121	-2.585809	107.124435	2	35	8.91	S	107	7	27.97	E
122	-2.568123	106.872679	2	34	5.24	S	106	52	21.64	E
123	-2.568096	106.890661	2	34	5.15	S	106	53	26.38	E
124	-2.568042	106.926624	2	34	4.95	S	106	55	35.85	E
125	-2.568015	106.944605	2	34	4.85	S	106	56	40.58	E
126	-2.567959	106.980567	2	34	4.65	S	106	58	50.04	E
127	-2.567931	106.998547	2	34	4.55	S	106	59	54.77	E
128	-2.567903	107.016527	2	34	4.45	S	107	0	59.50	E

**CATATAN : BERLAKU MULAI 21 FEBRUARI 2020 HINGGA 25 FEBRUARI 2020**

129	-2.567874	107.034507	2	34	4.35	S	107	2	4.23	E
130	-2.567845	107.052487	2	34	4.24	S	107	3	8.95	E
131	-2.567757	107.106426	2	34	3.93	S	107	6	23.13	E
132	-2.550142	106.800726	2	33	0.51	S	106	48	2.61	E
133	-2.550116	106.818708	2	33	0.42	S	106	49	7.35	E
134	-2.550091	106.83669	2	33	0.33	S	106	50	12.08	E
135	-2.550038	106.872653	2	33	0.14	S	106	52	21.55	E
136	-2.550012	106.890634	2	33	0.04	S	106	53	26.28	E
137	-2.549904	106.962558	2	32	59.65	S	106	57	45.21	E
138	-2.549876	106.980539	2	32	59.55	S	106	58	49.94	E
139	-2.549848	106.998519	2	32	59.45	S	106	59	54.67	E
140	-2.54982	107.016499	2	32	59.35	S	107	0	59.40	E
141	-2.549791	107.034479	2	32	59.25	S	107	2	4.12	E
142	-2.549675	107.106396	2	32	58.83	S	107	6	23.03	E
143	-2.532179	106.710788	2	31	55.84	S	106	42	38.84	E
144	-2.532155	106.728771	2	31	55.76	S	106	43	43.58	E
145	-2.532131	106.746754	2	31	55.67	S	106	44	48.31	E
146	-2.532106	106.764736	2	31	55.58	S	106	45	53.05	E
147	-2.532081	106.782718	2	31	55.49	S	106	46	57.78	E
148	-2.532056	106.8007	2	31	55.40	S	106	48	2.52	E
149	-2.53198	106.854646	2	31	55.13	S	106	51	16.73	E
150	-2.531954	106.872627	2	31	55.03	S	106	52	21.46	E
151	-2.53182	106.962531	2	31	54.55	S	106	57	45.11	E
152	-2.531793	106.980511	2	31	54.45	S	106	58	49.84	E
153	-2.531765	106.998491	2	31	54.35	S	106	59	54.57	E
154	-2.531737	107.016471	2	31	54.25	S	107	0	59.30	E
155	-2.531593	107.106367	2	31	53.73	S	107	6	22.92	E
156	-2.531564	107.124346	2	31	53.63	S	107	7	27.65	E
157	-2.51423	106.602866	2	30	51.23	S	106	36	10.32	E
158	-2.514208	106.620849	2	30	51.15	S	106	37	15.06	E
159	-2.514116	106.692782	2	30	50.82	S	106	41	34.02	E
160	-2.514093	106.710765	2	30	50.73	S	106	42	38.75	E
161	-2.513921	106.836639	2	30	50.12	S	106	50	11.90	E
162	-2.513895	106.85462	2	30	50.02	S	106	51	16.63	E
163	-2.513737	106.962504	2	30	49.45	S	106	57	45.01	E
164	-2.513709	106.980484	2	30	49.35	S	106	58	49.74	E
165	-2.513682	106.998464	2	30	49.26	S	106	59	54.47	E
166	-2.513654	107.016443	2	30	49.15	S	107	0	59.19	E
167	-2.51354	107.088359	2	30	48.74	S	107	5	18.09	E
168	-2.513511	107.106338	2	30	48.64	S	107	6	22.82	E
169	-2.496187	106.566877	2	29	46.27	S	106	34	0.76	E
170	-2.496165	106.58486	2	29	46.19	S	106	35	5.50	E
171	-2.496143	106.602844	2	29	46.11	S	106	36	10.24	E
172	-2.496053	106.674776	2	29	45.79	S	106	40	29.19	E
173	-2.49603	106.692759	2	29	45.71	S	106	41	33.93	E
174	-2.496007	106.710741	2	29	45.63	S	106	42	38.67	E
175	-2.495861	106.818632	2	29	45.10	S	106	49	7.08	E
176	-2.495836	106.836614	2	29	45.01	S	106	50	11.81	E
177	-2.495429	107.106309	2	29	43.54	S	107	6	22.71	E
178	-2.478099	106.566855	2	28	41.16	S	106	34	0.68	E
179	-2.477873	106.746682	2	28	40.34	S	106	44	48.06	E
180	-2.477849	106.764663	2	28	40.26	S	106	45	52.79	E
181	-2.477825	106.782645	2	28	40.17	S	106	46	57.52	E
182	-2.477776	106.818607	2	28	39.99	S	106	49	6.99	E
183	-2.477751	106.836588	2	28	39.90	S	106	50	11.72	E
184	-2.477515	106.998409	2	28	39.05	S	106	59	54.27	E
185	-2.477488	107.016388	2	28	38.96	S	107	0	59.00	E
186	-2.45974	106.782621	2	27	35.06	S	106	46	57.44	E
187	-2.459432	106.998382	2	27	33.96	S	106	59	54.18	E
188	-2.459405	107.016361	2	27	33.86	S	107	0	58.90	E
189	-2.442658	105.703485	2	26	33.57	S	105	42	12.55	E
190	-2.441794	106.674708	2	26	30.46	S	106	40	28.95	E
191	-2.441771	106.69269	2	26	30.38	S	106	41	33.68	E
192	-2.441748	106.710672	2	26	30.29	S	106	42	38.42	E
193	-2.441654	106.782597	2	26	29.95	S	106	46	57.35	E
194	-2.441402	106.962397	2	26	29.05	S	106	57	44.63	E

**CATATAN : BERLAKU MULAI 21 FEBRUARI 2020 HINGGA 25 FEBRUARI 2020**

195	-2.441376	106.980376	2	26	28.95	S	106	58	49.35	E
196	-2.441349	106.998355	2	26	28.86	S	106	59	54.08	E
197	-2.441322	107.016334	2	26	28.76	S	107	0	58.80	E
198	-2.441295	107.034312	2	26	28.66	S	107	2	3.52	E
199	-2.424565	105.703476	2	25	28.43	S	105	42	12.51	E
200	-2.424504	105.811403	2	25	28.21	S	105	48	41.05	E
201	-2.424015	106.404942	2	25	26.45	S	106	24	17.79	E
202	-2.423997	106.422926	2	25	26.39	S	106	25	22.53	E
203	-2.423977	106.44091	2	25	26.32	S	106	26	27.28	E
204	-2.423958	106.458893	2	25	26.25	S	106	27	32.01	E
205	-2.423729	106.656704	2	25	25.42	S	106	39	24.13	E
206	-2.423707	106.674686	2	25	25.35	S	106	40	28.87	E
207	-2.423592	106.764592	2	25	24.93	S	106	45	52.53	E
208	-2.423569	106.782573	2	25	24.85	S	106	46	57.26	E
209	-2.423471	106.854495	2	25	24.50	S	106	51	16.18	E
210	-2.423292	106.98035	2	25	23.85	S	106	58	49.26	E
211	-2.423212	107.034285	2	25	23.56	S	107	2	3.43	E
212	-2.423185	107.052263	2	25	23.47	S	107	3	8.15	E
213	-2.423129	107.088218	2	25	23.26	S	107	5	17.58	E
214	-2.406411	105.811393	2	24	23.08	S	105	48	41.01	E
215	-2.405927	106.404923	2	24	21.34	S	106	24	17.72	E
216	-2.40587	106.458874	2	24	21.13	S	106	27	31.95	E
217	-2.40585	106.476857	2	24	21.06	S	106	28	36.69	E
218	-2.405664	106.6387	2	24	20.39	S	106	38	19.32	E
219	-2.405643	106.656682	2	24	20.31	S	106	39	24.06	E
220	-2.405507	106.764569	2	24	19.83	S	106	45	52.45	E
221	-2.405483	106.78255	2	24	19.74	S	106	46	57.18	E
222	-2.405387	106.85447	2	24	19.39	S	106	51	16.09	E
223	-2.405209	106.980324	2	24	18.75	S	106	58	49.17	E
224	-2.405182	106.998302	2	24	18.66	S	106	59	53.89	E
225	-2.405156	107.01628	2	24	18.56	S	107	0	58.61	E
226	-2.405129	107.034258	2	24	18.46	S	107	2	3.33	E
227	-2.405102	107.052236	2	24	18.37	S	107	3	8.05	E
228	-2.405047	107.088191	2	24	18.17	S	107	5	17.49	E
229	-2.388379	105.703457	2	23	18.16	S	105	42	12.45	E
230	-2.388369	105.721445	2	23	18.13	S	105	43	17.20	E
231	-2.38836	105.739432	2	23	18.10	S	105	44	21.96	E
232	-2.38835	105.75742	2	23	18.06	S	105	45	26.71	E
233	-2.38834	105.775407	2	23	18.02	S	105	46	31.47	E
234	-2.387819	106.422888	2	23	16.15	S	106	25	22.40	E
235	-2.387781	106.458855	2	23	16.01	S	106	27	31.88	E
236	-2.387762	106.476838	2	23	15.94	S	106	28	36.62	E
237	-2.387578	106.638679	2	23	15.28	S	106	38	19.24	E
238	-2.387421	106.764546	2	23	14.72	S	106	45	52.37	E
239	-2.387398	106.782526	2	23	14.63	S	106	46	57.09	E
240	-2.38735	106.818486	2	23	14.46	S	106	49	6.55	E
241	-2.387326	106.836466	2	23	14.37	S	106	50	11.28	E
242	-2.387302	106.854446	2	23	14.29	S	106	51	16.01	E
243	-2.387151	106.962319	2	23	13.74	S	106	57	44.35	E
244	-2.387125	106.980298	2	23	13.65	S	106	58	49.07	E
245	-2.387099	106.998276	2	23	13.56	S	106	59	53.79	E
246	-2.387046	107.034231	2	23	13.37	S	107	2	3.23	E
247	-2.387019	107.052209	2	23	13.27	S	107	3	7.95	E
248	-2.386992	107.070186	2	23	13.17	S	107	4	12.67	E
249	-2.386965	107.088163	2	23	13.07	S	107	5	17.39	E
250	-2.386937	107.10614	2	23	12.97	S	107	6	22.10	E
251	-2.370286	105.703448	2	22	13.03	S	105	42	12.41	E
252	-2.369767	106.386903	2	22	11.16	S	106	23	12.85	E
253	-2.369731	106.42287	2	22	11.03	S	106	25	22.33	E
254	-2.369712	106.440853	2	22	10.96	S	106	26	27.07	E
255	-2.369693	106.458836	2	22	10.89	S	106	27	31.81	E
256	-2.369335	106.764523	2	22	9.61	S	106	45	52.28	E
257	-2.369265	106.818463	2	22	9.35	S	106	49	6.47	E
258	-2.369068	106.962294	2	22	8.64	S	106	57	44.26	E
259	-2.369042	106.980272	2	22	8.55	S	106	58	48.98	E
260	-2.369016	106.99825	2	22	8.46	S	106	59	53.70	E

**CATATAN : BERLAKU MULAI 21 FEBRUARI 2020 HINGGA 25 FEBRUARI 2020**

261	-2.368883	107.088136	2	22	7.98	S	107	5	17.29	E
262	-2.351765	106.296967	2	21	6.35	S	106	17	49.08	E
263	-2.351748	106.314951	2	21	6.29	S	106	18	53.82	E
264	-2.351696	106.368902	2	21	6.11	S	106	22	8.05	E
265	-2.351678	106.386885	2	21	6.04	S	106	23	12.79	E
266	-2.351623	106.440834	2	21	5.84	S	106	26	27.00	E
267	-2.351604	106.458817	2	21	5.77	S	106	27	31.74	E
268	-2.35125	106.7645	2	21	4.50	S	106	45	52.20	E
269	-2.351227	106.78248	2	21	4.42	S	106	46	56.93	E
270	-2.351203	106.80046	2	21	4.33	S	106	48	1.66	E
271	-2.333676	106.296951	2	20	1.23	S	106	17	49.02	E
272	-2.333607	106.368884	2	20	0.99	S	106	22	7.98	E
273	-2.333589	106.386867	2	20	0.92	S	106	23	12.72	E
274	-2.333571	106.40485	2	20	0.86	S	106	24	17.46	E
275	-2.333553	106.422833	2	20	0.79	S	106	25	22.20	E
276	-2.333535	106.440816	2	20	0.73	S	106	26	26.94	E
277	-2.333231	106.710538	2	19	59.63	S	106	42	37.94	E
278	-2.333209	106.728518	2	19	59.55	S	106	43	42.66	E
279	-2.333186	106.746498	2	19	59.47	S	106	44	47.39	E
280	-2.333118	106.800437	2	19	59.22	S	106	48	1.57	E
281	-2.315618	106.260967	2	18	56.22	S	106	15	39.48	E
282	-2.315602	106.278951	2	18	56.17	S	106	16	44.22	E
283	-2.3155	106.38685	2	18	55.80	S	106	23	12.66	E
284	-2.315312	106.56667	2	18	55.12	S	106	34	0.01	E
285	-2.315292	106.584652	2	18	55.05	S	106	35	4.75	E
286	-2.315145	106.710516	2	18	54.52	S	106	42	37.86	E
287	-2.315033	106.800414	2	18	54.12	S	106	48	1.49	E
288	-2.31501	106.818393	2	18	54.04	S	106	49	6.21	E
289	-2.297529	106.260951	2	17	51.10	S	106	15	39.42	E
290	-2.297244	106.548669	2	17	50.08	S	106	32	55.21	E
291	-2.297224	106.566651	2	17	50.01	S	106	33	59.94	E
292	-2.29708	106.692514	2	17	49.49	S	106	41	33.05	E
293	-2.297058	106.710494	2	17	49.41	S	106	42	37.78	E
294	-2.296924	106.81837	2	17	48.93	S	106	49	6.13	E
295	-2.296901	106.836348	2	17	48.84	S	106	50	10.85	E
296	-2.296831	106.890283	2	17	48.59	S	106	53	25.02	E
297	-2.279454	106.242952	2	16	46.03	S	106	14	34.63	E
298	-2.279176	106.530669	2	16	45.03	S	106	31	50.41	E
299	-2.279156	106.54865	2	16	44.96	S	106	32	55.14	E
300	-2.279097	106.602592	2	16	44.75	S	106	36	9.33	E
301	-2.279077	106.620573	2	16	44.68	S	106	37	14.06	E
302	-2.278994	106.692493	2	16	44.38	S	106	41	32.97	E
303	-2.278816	106.836325	2	16	43.74	S	106	50	10.77	E
304	-2.278793	106.854304	2	16	43.65	S	106	51	15.49	E
305	-2.27877	106.872282	2	16	43.57	S	106	52	20.22	E
306	-2.278722	106.908237	2	16	43.40	S	106	54	29.65	E
307	-2.278698	106.926215	2	16	43.31	S	106	55	34.37	E
308	-2.278674	106.944192	2	16	43.23	S	106	56	39.09	E
309	-2.261364	106.242937	2	15	40.91	S	106	14	34.57	E
310	-2.261088	106.53065	2	15	39.92	S	106	31	50.34	E
311	-2.26103	106.584592	2	15	39.71	S	106	35	4.53	E
312	-2.26101	106.602572	2	15	39.64	S	106	36	9.26	E
313	-2.26099	106.620553	2	15	39.56	S	106	37	13.99	E
314	-2.260928	106.674492	2	15	39.34	S	106	40	28.17	E
315	-2.260821	106.764389	2	15	38.96	S	106	45	51.80	E
316	-2.260799	106.782367	2	15	38.88	S	106	46	56.52	E
317	-2.260638	106.908213	2	15	38.30	S	106	54	29.57	E
318	-2.26059	106.944168	2	15	38.12	S	106	56	39.00	E
319	-2.242962	106.566592	2	14	34.66	S	106	33	59.73	E
320	-2.242942	106.584572	2	14	34.59	S	106	35	4.46	E
321	-2.242862	106.656492	2	14	34.30	S	106	39	23.37	E
322	-2.242842	106.674472	2	14	34.23	S	106	40	28.10	E
323	-2.242757	106.746388	2	14	33.93	S	106	44	47.00	E
324	-2.242735	106.764367	2	14	33.85	S	106	45	51.72	E
325	-2.242713	106.782345	2	14	33.77	S	106	46	56.44	E
326	-2.242691	106.800324	2	14	33.69	S	106	48	1.17	E

**CATATAN : BERLAKU MULAI 21 FEBRUARI 2020 HINGGA 25 FEBRUARI 2020**

327	-2.242669	106.818302	2	14	33.61	S	106	49	5.89	E
328	-2.242601	106.872235	2	14	33.36	S	106	52	20.05	E
329	-2.242577	106.890213	2	14	33.28	S	106	53	24.77	E
330	-2.242554	106.90819	2	14	33.19	S	106	54	29.48	E
331	-2.24253	106.926167	2	14	33.11	S	106	55	34.20	E
332	-2.242506	106.944144	2	14	33.02	S	106	56	38.92	E
333	-2.224912	106.530612	2	13	29.68	S	106	31	50.20	E
334	-2.224893	106.548593	2	13	29.61	S	106	32	54.93	E
335	-2.224874	106.566573	2	13	29.55	S	106	33	59.66	E
336	-2.224855	106.584553	2	13	29.48	S	106	35	4.39	E
337	-2.224816	106.620513	2	13	29.34	S	106	37	13.85	E
338	-2.224796	106.638492	2	13	29.27	S	106	38	18.57	E
339	-2.224775	106.656472	2	13	29.19	S	106	39	23.30	E
340	-2.224755	106.674451	2	13	29.12	S	106	40	28.02	E
341	-2.224671	106.746367	2	13	28.82	S	106	44	46.92	E
342	-2.22465	106.764345	2	13	28.74	S	106	45	51.64	E
343	-2.224628	106.782324	2	13	28.66	S	106	46	56.37	E
344	-2.224606	106.800302	2	13	28.58	S	106	48	1.09	E
345	-2.224584	106.81828	2	13	28.50	S	106	49	5.81	E
346	-2.224539	106.854235	2	13	28.34	S	106	51	15.25	E
347	-2.224516	106.872212	2	13	28.26	S	106	52	19.96	E
348	-2.207048	106.296838	2	12	25.37	S	106	17	48.62	E
349	-2.206806	106.548574	2	12	24.50	S	106	32	54.87	E
350	-2.206787	106.566554	2	12	24.43	S	106	33	59.59	E
351	-2.206767	106.584534	2	12	24.36	S	106	35	4.32	E
352	-2.206748	106.602514	2	12	24.29	S	106	36	9.05	E
353	-2.206729	106.620493	2	12	24.22	S	106	37	13.77	E
354	-2.206709	106.638473	2	12	24.15	S	106	38	18.50	E
355	-2.206689	106.656452	2	12	24.08	S	106	39	23.23	E
356	-2.206668	106.674431	2	12	24.00	S	106	40	27.95	E
357	-2.206648	106.69241	2	12	23.93	S	106	41	32.68	E
358	-2.206564	106.764324	2	12	23.63	S	106	45	51.57	E
359	-2.206542	106.782302	2	12	23.55	S	106	46	56.29	E
360	-2.206521	106.80028	2	12	23.48	S	106	48	1.01	E
361	-2.206499	106.818258	2	12	23.40	S	106	49	5.73	E
362	-2.206476	106.836235	2	12	23.31	S	106	50	10.45	E
363	-2.206454	106.854212	2	12	23.23	S	106	51	15.16	E
364	-2.188958	106.296822	2	11	20.25	S	106	17	48.56	E
365	-2.188718	106.548555	2	11	19.38	S	106	32	54.80	E
366	-2.18868	106.584515	2	11	19.25	S	106	35	4.25	E
367	-2.188641	106.620474	2	11	19.11	S	106	37	13.71	E
368	-2.188622	106.638453	2	11	19.04	S	106	38	18.43	E
369	-2.188602	106.656432	2	11	18.97	S	106	39	23.16	E
370	-2.188478	106.764303	2	11	18.52	S	106	45	51.49	E
371	-2.188435	106.800258	2	11	18.37	S	106	48	0.93	E
372	-2.188413	106.818236	2	11	18.29	S	106	49	5.65	E
373	-2.188391	106.836213	2	11	18.21	S	106	50	10.37	E
374	-2.170868	106.296807	2	10	15.12	S	106	17	48.51	E
375	-2.17063	106.548537	2	10	14.27	S	106	32	54.73	E
376	-2.170612	106.566516	2	10	14.20	S	106	33	59.46	E
377	-2.170593	106.584496	2	10	14.13	S	106	35	4.19	E
378	-2.170515	106.656412	2	10	13.85	S	106	39	23.08	E
379	-2.170392	106.764282	2	10	13.41	S	106	45	51.42	E
380	-2.170328	106.818214	2	10	13.18	S	106	49	5.57	E
381	-2.170306	106.836191	2	10	13.10	S	106	50	10.29	E
382	-2.152779	106.296791	2	9	10.00	S	106	17	48.45	E
383	-2.152428	106.656393	2	9	8.74	S	106	39	23.01	E
384	-2.152328	106.746283	2	9	8.38	S	106	44	46.62	E
385	-2.152307	106.764261	2	9	8.31	S	106	45	51.34	E
386	-2.152221	106.836169	2	9	8.00	S	106	50	10.21	E
387	-2.134689	106.296776	2	8	4.88	S	106	17	48.39	E
388	-2.134342	106.656373	2	8	3.63	S	106	39	22.94	E
389	-2.134136	106.836148	2	8	2.89	S	106	50	10.13	E
390	-2.116537	106.368684	2	6	59.53	S	106	22	7.26	E
391	-2.116521	106.386665	2	6	59.48	S	106	23	11.99	E
392	-2.116505	106.404645	2	6	59.42	S	106	24	16.72	E

**CATATAN : BERLAKU MULAI 21 FEBRUARI 2020 HINGGA 25 FEBRUARI 2020**

393	-2.116488	106.422625	2	6	59.36	S	106	25	21.45	E
394	-2.116472	106.440605	2	6	59.30	S	106	26	26.18	E
395	-2.116455	106.458585	2	6	59.24	S	106	27	30.91	E
396	-2.116051	106.836126	2	6	57.78	S	106	50	10.05	E
397	-2.098383	106.440589	2	5	54.18	S	106	26	26.12	E
398	-2.098366	106.458568	2	5	54.12	S	106	27	30.84	E
399	-2.098349	106.476548	2	5	54.06	S	106	28	35.57	E
400	-2.098332	106.494527	2	5	54.00	S	106	29	40.30	E
401	-2.098315	106.512506	2	5	53.93	S	106	30	45.02	E
402	-2.098297	106.530485	2	5	53.87	S	106	31	49.75	E
403	-2.097966	106.836105	2	5	52.68	S	106	50	9.98	E