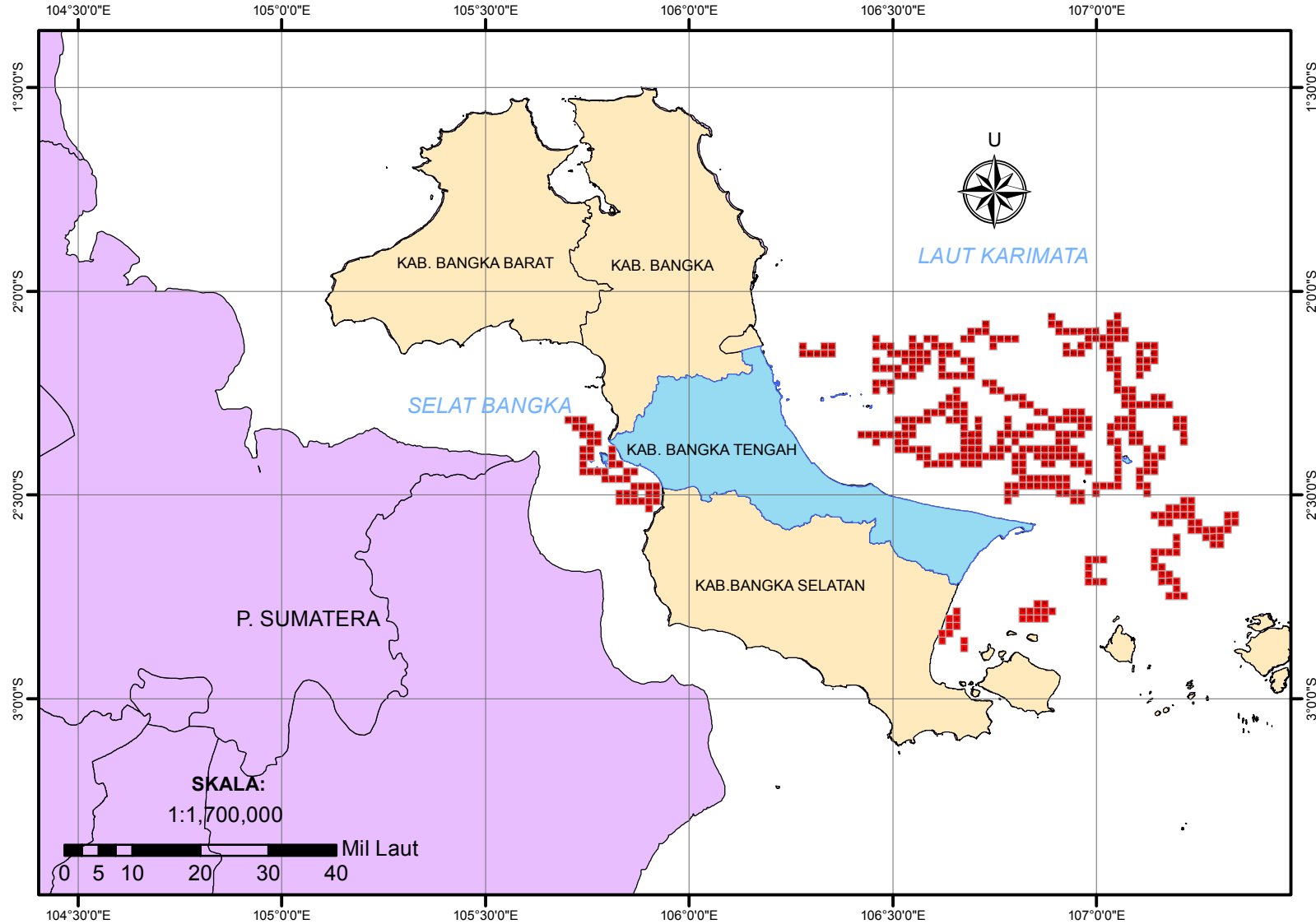
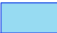







SISTEM INFORMASI DAERAH POTENSIAL PENANGKAPAN IKAN PERAIRAN KABUPATEN BANGKA TENGAH TANGGAL 21 JANUARI 2020



Legenda:

-  Kab. Bangka Tengah
-  Prov. Bangka Belitung
-  P. Sumatera
-  Daerah Potensial Penangkapan Ikan



Dibuat oleh:
**Dinas Perikanan
Kabupaten Bangka Tengah**

- Sumber Data:
1. Data Ocean Color
 2. Data NCEP
 3. Peta RBI Dijital

NO	Lat	Lon
	Dec	Dec
0	-2.875868	106.675294
1	-2.85786	106.621303
2	-2.857782	106.675267
3	-2.839773	106.621277
4	-2.839747	106.639265
5	-2.821661	106.63924
6	-2.821635	106.657228
7	-2.803574	106.639215
8	-2.803549	106.657202
9	-2.803307	106.819081
10	-2.803279	106.837067
11	-2.80325	106.855052
12	-2.803221	106.873038
13	-2.785462	106.657177
14	-2.785222	106.819053
15	-2.785194	106.837039
16	-2.785166	106.855024
17	-2.785137	106.873009
18	-2.785108	106.890994
19	-2.767081	106.854996
20	-2.767053	106.87298
21	-2.748447	107.178658
22	-2.748413	107.196639
23	-2.74838	107.21462
24	-2.730333	107.196606
25	-2.712626	106.980796
26	-2.712597	106.998778
27	-2.712567	107.016761
28	-2.712317	107.160613
29	-2.712284	107.178593
30	-2.712252	107.196573
31	-2.694543	106.980766
32	-2.694236	107.160581
33	-2.694203	107.178561
34	-2.67646	106.980737
35	-2.676186	107.142569
36	-2.676154	107.160549
37	-2.658376	106.980708
38	-2.658347	106.99869
39	-2.658318	107.016672
40	-2.658105	107.142537
41	-2.640023	107.142506
42	-2.639992	107.160486
43	-2.63996	107.178465
44	-2.639928	107.196445
45	-2.621848	107.196413
46	-2.621686	107.286305
47	-2.621653	107.304282
48	-2.603767	107.196382
49	-2.603639	107.268294
50	-2.603606	107.286272
51	-2.603573	107.304249
52	-2.585623	107.232307
53	-2.585591	107.250284
54	-2.585559	107.268262
55	-2.585526	107.286239
56	-2.585494	107.304217
57	-2.585461	107.322194
58	-2.567667	107.160363
59	-2.567636	107.178341

Latitude			
DD	MM	SS	Position
2	52	33.12	S
2	51	28.30	S
2	51	28.02	S
2	50	23.18	S
2	50	23.09	S
2	49	17.98	S
2	49	17.89	S
2	48	12.87	S
2	48	12.78	S
2	48	11.91	S
2	48	11.80	S
2	48	11.70	S
2	48	11.60	S
2	47	7.66	S
2	47	6.80	S
2	47	6.70	S
2	47	6.60	S
2	47	6.49	S
2	47	6.39	S
2	46	1.49	S
2	46	1.39	S
2	44	54.41	S
2	44	54.29	S
2	44	54.17	S
2	43	49.20	S
2	42	45.45	S
2	42	45.35	S
2	42	45.24	S
2	42	44.34	S
2	42	44.22	S
2	42	44.11	S
2	41	40.35	S
2	41	39.25	S
2	41	39.13	S
2	40	35.26	S
2	40	34.27	S
2	40	34.15	S
2	39	30.15	S
2	39	30.05	S
2	39	29.94	S
2	39	29.18	S
2	38	24.08	S
2	38	23.97	S
2	38	23.86	S
2	38	23.74	S
2	37	18.65	S
2	37	18.07	S
2	37	17.95	S
2	36	13.56	S
2	36	13.10	S
2	36	12.98	S
2	36	12.86	S
2	35	8.24	S
2	35	8.13	S
2	35	8.01	S
2	35	7.89	S
2	35	7.78	S
2	35	7.66	S
2	34	3.60	S
2	34	3.49	S

Longitude			
DD	MM	SS	Position
106	40	31.06	E
106	37	16.69	E
106	40	30.96	E
106	37	16.60	E
106	38	21.35	E
106	38	21.26	E
106	39	26.02	E
106	38	21.17	E
106	39	25.93	E
106	49	8.69	E
106	50	13.44	E
106	51	18.19	E
106	52	22.94	E
106	39	25.84	E
106	49	8.59	E
106	50	13.34	E
106	51	18.09	E
106	52	22.83	E
106	53	27.58	E
106	51	17.99	E
106	52	22.73	E
107	10	43.17	E
107	11	47.90	E
107	12	52.63	E
107	11	47.78	E
106	58	50.87	E
106	59	55.60	E
107	1	0.34	E
107	9	38.21	E
107	10	42.93	E
107	11	47.66	E
106	58	50.76	E
107	9	38.09	E
107	10	42.82	E
106	58	50.65	E
107	8	33.25	E
107	9	37.98	E
106	58	50.55	E
106	59	55.28	E
107	1	0.02	E
107	8	33.13	E
107	8	33.02	E
107	9	37.75	E
107	10	42.47	E
107	11	47.20	E
107	11	47.09	E
107	17	10.70	E
107	18	15.42	E
107	11	46.98	E
107	16	5.86	E
107	17	10.58	E
107	18	15.30	E
107	13	56.31	E
107	15	1.02	E
107	16	5.74	E
107	17	10.46	E
107	18	15.18	E
107	19	19.90	E
107	9	37.31	E
107	10	42.03	E

60	-2.567542	107.232275
61	-2.567511	107.250253
62	-2.567381	107.322161
63	-2.567348	107.340137
64	-2.549615	107.142354
65	-2.549585	107.160332
66	-2.549555	107.178311
67	-2.549524	107.196289
68	-2.549493	107.214266
69	-2.549462	107.232244
70	-2.549302	107.322128
71	-2.549269	107.340104
72	-2.532999	105.901414
73	-2.531474	107.17828
74	-2.531443	107.196258
75	-2.531412	107.214235
76	-2.531381	107.232213
77	-2.514955	105.829447
78	-2.514943	105.847436
79	-2.514931	105.865424
80	-2.514919	105.883413
81	-2.514907	105.901402
82	-2.514894	105.91939
83	-2.513996	106.782694
84	-2.513764	106.944524
85	-2.513737	106.962504
86	-2.513332	107.214205
87	-2.513301	107.232182
88	-2.496863	105.829436
89	-2.496851	105.847424
90	-2.496839	105.865413
91	-2.496815	105.901389
92	-2.496802	105.919377
93	-2.49591	106.782669
94	-2.495886	106.800651
95	-2.495733	106.908537
96	-2.495706	106.926517
97	-2.49568	106.944497
98	-2.495653	106.962477
99	-2.495599	106.998436
100	-2.4954	107.124287
101	-2.478747	105.865401
102	-2.478735	105.883389
103	-2.478723	105.901377
104	-2.47871	105.919365
105	-2.47825	106.782645
106	-2.477801	106.800626
107	-2.477776	106.818607
108	-2.477751	106.836588
109	-2.477726	106.854569
110	-2.4777	106.87255
111	-2.477675	106.89053
112	-2.477649	106.908511
113	-2.477622	106.926491
114	-2.477515	106.998409
115	-2.477488	107.016388
116	-2.47746	107.034367
117	-2.477432	107.052346
118	-2.477347	107.10628
119	-2.477318	107.124258
120	-2.4607	105.793437
121	-2.460689	105.811425
122	-2.460678	105.829413
123	-2.460666	105.847401

2	34	3.15	S
2	34	3.04	S
2	34	2.57	S
2	34	2.45	S
2	32	58.61	S
2	32	58.51	S
2	32	58.40	S
2	32	58.29	S
2	32	58.17	S
2	32	58.06	S
2	32	57.49	S
2	32	57.37	S
2	31	58.80	S
2	31	53.31	S
2	31	53.19	S
2	31	53.08	S
2	31	52.97	S
2	30	53.84	S
2	30	53.79	S
2	30	53.75	S
2	30	53.71	S
2	30	53.67	S
2	30	53.62	S
2	30	50.39	S
2	30	49.55	S
2	30	49.45	S
2	30	48.00	S
2	30	47.88	S
2	29	48.71	S
2	29	48.66	S
2	29	48.62	S
2	29	48.53	S
2	29	48.49	S
2	29	45.28	S
2	29	45.19	S
2	29	44.64	S
2	29	44.54	S
2	29	44.45	S
2	29	44.35	S
2	29	44.16	S
2	29	43.44	S
2	28	43.49	S
2	28	43.45	S
2	28	43.40	S
2	28	43.36	S
2	28	40.17	S
2	28	40.08	S
2	28	39.99	S
2	28	39.90	S
2	28	39.81	S
2	28	39.72	S
2	28	39.63	S
2	28	39.54	S
2	28	39.44	S
2	28	39.05	S
2	28	38.96	S
2	28	38.86	S
2	28	38.76	S
2	28	38.45	S
2	28	38.34	S
2	27	38.52	S
2	27	38.48	S
2	27	38.44	S
2	27	38.40	S

107	13	56.19	E
107	15	0.91	E
107	19	19.78	E
107	20	24.49	E
107	8	32.47	E
107	9	37.20	E
107	10	41.92	E
107	11	46.64	E
107	12	51.36	E
107	13	56.08	E
107	19	19.66	E
107	20	24.37	E
105	54	5.09	E
107	10	41.81	E
107	11	46.53	E
107	12	51.25	E
107	13	55.97	E
105	49	46.01	E
105	50	50.77	E
105	51	55.53	E
105	53	0.29	E
105	54	5.05	E
105	55	9.80	E
106	46	57.70	E
106	56	40.29	E
106	57	45.01	E
107	12	51.14	E
107	13	55.86	E
105	49	45.97	E
105	50	50.73	E
105	51	55.49	E
105	54	5.00	E
105	55	9.76	E
106	46	57.61	E
106	48	2.34	E
106	54	30.73	E
106	55	35.46	E
106	56	40.19	E
106	57	44.92	E
106	59	54.37	E
107	7	27.43	E
105	51	55.44	E
105	53	0.20	E
105	54	4.96	E
105	55	9.71	E
106	46	57.52	E
106	48	2.25	E
106	49	6.99	E
106	50	11.72	E
106	51	16.45	E
106	52	21.18	E
106	53	25.91	E
106	54	30.64	E
106	55	35.37	E
106	59	54.27	E
107	0	59.00	E
107	2	3.72	E
107	3	8.45	E
107	6	22.61	E
107	7	27.33	E
105	47	36.37	E
105	48	41.13	E
105	49	45.89	E
105	50	50.64	E

124	-2.459691	106.818583
125	-2.459666	106.836564
126	-2.459641	106.854544
127	-2.459616	106.872525
128	-2.45959	106.890505
129	-2.459564	106.908485
130	-2.459538	106.926465
131	-2.459513	107.052318
132	-2.459265	107.106252
133	-2.442638	105.739462
134	-2.442628	105.75745
135	-2.442618	105.775438
136	-2.442607	105.793426
137	-2.442574	105.84739
138	-2.442563	105.865377
139	-2.44163	106.800578
140	-2.441606	106.818558
141	-2.441376	106.980376
142	-2.441267	107.052229
143	-2.441183	107.106224
144	-2.441155	107.124201
145	-2.441126	107.142178
146	-2.424545	105.739452
147	-2.424504	105.811403
148	-2.424493	105.829391
149	-2.423816	106.584775
150	-2.423795	106.602757
151	-2.423773	106.62074
152	-2.423751	106.638722
153	-2.423707	106.674686
154	-2.423685	106.692667
155	-2.423662	106.710649
156	-2.423545	106.800554
157	-2.42352	106.818534
158	-2.423447	106.872475
159	-2.423421	106.890454
160	-2.423345	106.944392
161	-2.423319	106.962371
162	-2.423292	106.98035
163	-2.423185	107.052263
164	-2.423073	107.124173
165	-2.423045	107.14215
166	-2.406453	105.739442
167	-2.406443	105.75743
168	-2.406411	105.811393
169	-2.405749	106.566772
170	-2.405729	106.584754
171	-2.405686	106.620718
172	-2.405664	106.6387
173	-2.405643	106.656682
174	-2.405621	106.674664
175	-2.405598	106.692645
176	-2.405576	106.710626
177	-2.405553	106.728607
178	-2.40553	106.746588
179	-2.405507	106.764569
180	-2.405459	106.80053
181	-2.405435	106.81851
182	-2.405387	106.85447
183	-2.405362	106.87245
184	-2.405337	106.890429
185	-2.405312	106.908409
186	-2.405286	106.926388
187	-2.405261	106.944367

2	27	34.89	S
2	27	34.80	S
2	27	34.71	S
2	27	34.62	S
2	27	34.52	S
2	27	34.43	S
2	27	34.34	S
2	27	33.66	S
2	27	33.35	S
2	26	33.50	S
2	26	33.46	S
2	26	33.42	S
2	26	33.39	S
2	26	33.27	S
2	26	33.23	S
2	26	29.87	S
2	26	29.78	S
2	26	28.95	S
2	26	28.56	S
2	26	28.26	S
2	26	28.16	S
2	26	28.05	S
2	25	28.36	S
2	25	28.21	S
2	25	28.17	S
2	25	25.74	S
2	25	25.66	S
2	25	25.58	S
2	25	25.50	S
2	25	25.35	S
2	25	25.27	S
2	25	25.18	S
2	25	24.76	S
2	25	24.67	S
2	25	24.41	S
2	25	24.32	S
2	25	24.04	S
2	25	23.95	S
2	25	23.85	S
2	25	23.47	S
2	25	23.06	S
2	25	22.96	S
2	24	23.23	S
2	24	23.19	S
2	24	23.08	S
2	24	20.70	S
2	24	20.62	S
2	24	20.47	S
2	24	20.39	S
2	24	20.31	S
2	24	20.24	S
2	24	20.15	S
2	24	20.07	S
2	24	19.99	S
2	24	19.91	S
2	24	19.83	S
2	24	19.65	S
2	24	19.57	S
2	24	19.39	S
2	24	19.30	S
2	24	19.21	S
2	24	19.12	S
2	24	19.03	S
2	24	18.94	S

106	49	6.90	E
106	50	11.63	E
106	51	16.36	E
106	52	21.09	E
106	53	25.82	E
106	54	30.55	E
106	55	35.27	E
107	3	8.34	E
107	6	22.51	E
105	44	22.06	E
105	45	26.82	E
105	46	31.58	E
105	47	36.33	E
105	50	50.60	E
105	51	55.36	E
106	48	2.08	E
106	49	6.81	E
106	58	49.35	E
107	3	8.24	E
107	6	22.41	E
107	7	27.12	E
107	8	31.84	E
105	44	22.03	E
105	48	41.05	E
105	49	45.81	E
106	35	5.19	E
106	36	9.93	E
106	37	14.66	E
106	38	19.40	E
106	40	28.87	E
106	41	33.60	E
106	42	38.34	E
106	48	1.99	E
106	49	6.72	E
106	52	20.91	E
106	53	25.63	E
106	56	39.81	E
106	57	44.54	E
106	58	49.26	E
107	3	8.15	E
107	7	27.02	E
107	8	31.74	E
105	44	21.99	E
105	45	26.75	E
105	48	41.01	E
106	34	0.38	E
106	35	5.11	E
106	37	14.58	E
106	38	19.32	E
106	39	24.06	E
106	40	28.79	E
106	41	33.52	E
106	42	38.25	E
106	43	42.99	E
106	44	47.72	E
106	45	52.45	E
106	48	1.91	E
106	49	6.64	E
106	51	16.09	E
106	52	20.82	E
106	53	25.54	E
106	54	30.27	E
106	55	35.00	E
106	56	39.72	E

188	-2.405235	106.962345
189	-2.405102	107.052236
190	-2.404991	107.124145
191	-2.404963	107.142121
192	-2.404935	107.160098
193	-2.38836	105.739432
194	-2.38835	105.75742
195	-2.388319	105.811382
196	-2.387723	106.512804
197	-2.387703	106.530786
198	-2.387682	106.548769
199	-2.387662	106.566751
200	-2.387641	106.584733
201	-2.387534	106.674642
202	-2.387512	106.692623
203	-2.387489	106.710604
204	-2.387444	106.746565
205	-2.387421	106.764546
206	-2.387398	106.782526
207	-2.38735	106.818486
208	-2.387326	106.836466
209	-2.387302	106.854446
210	-2.387277	106.872425
211	-2.387253	106.890404
212	-2.387228	106.908383
213	-2.387202	106.926362
214	-2.387177	106.944341
215	-2.387019	107.052209
216	-2.386909	107.124117
217	-2.386853	107.160069
218	-2.370257	105.75741
219	-2.370247	105.775397
220	-2.369693	106.458836
221	-2.369635	106.512784
222	-2.369615	106.530766
223	-2.369447	106.67462
224	-2.369425	106.692601
225	-2.369403	106.710582
226	-2.369335	106.764523
227	-2.369289	106.800483
228	-2.369143	106.908359
229	-2.369118	106.926337
230	-2.368963	107.034205
231	-2.368937	107.052182
232	-2.368883	107.088136
233	-2.368855	107.106113
234	-2.368686	107.213968
235	-2.352174	105.739413
236	-2.352165	105.7574
237	-2.352155	105.775387
238	-2.351642	106.422851
239	-2.351623	106.440834
240	-2.351604	106.458817
241	-2.351585	106.4768
242	-2.351566	106.494782
243	-2.351547	106.512764
244	-2.351527	106.530747
245	-2.351507	106.548729
246	-2.351361	106.674598
247	-2.351339	106.692579
248	-2.351317	106.710559
249	-2.35125	106.7645
250	-2.351227	106.78248
251	-2.351203	106.80046

2	24	18.85	S
2	24	18.37	S
2	24	17.97	S
2	24	17.87	S
2	24	17.77	S
2	23	18.10	S
2	23	18.06	S
2	23	17.95	S
2	23	15.80	S
2	23	15.73	S
2	23	15.66	S
2	23	15.58	S
2	23	15.51	S
2	23	15.12	S
2	23	15.04	S
2	23	14.96	S
2	23	14.80	S
2	23	14.72	S
2	23	14.63	S
2	23	14.46	S
2	23	14.37	S
2	23	14.29	S
2	23	14.20	S
2	23	14.11	S
2	23	14.02	S
2	23	13.93	S
2	23	13.84	S
2	23	13.27	S
2	23	12.87	S
2	23	12.67	S
2	22	12.93	S
2	22	12.89	S
2	22	10.89	S
2	22	10.69	S
2	22	10.61	S
2	22	10.01	S
2	22	9.93	S
2	22	9.85	S
2	22	9.61	S
2	22	9.44	S
2	22	8.91	S
2	22	8.82	S
2	22	8.27	S
2	22	8.17	S
2	22	7.98	S
2	22	7.88	S
2	22	7.27	S
2	21	7.83	S
2	21	7.79	S
2	21	7.76	S
2	21	5.91	S
2	21	5.84	S
2	21	5.77	S
2	21	5.71	S
2	21	5.64	S
2	21	5.57	S
2	21	5.50	S
2	21	5.43	S
2	21	4.90	S
2	21	4.82	S
2	21	4.74	S
2	21	4.50	S
2	21	4.42	S
2	21	4.33	S

106	57	44.44	E
107	3	8.05	E
107	7	26.92	E
107	8	31.64	E
107	9	36.35	E
105	44	21.96	E
105	45	26.71	E
105	48	40.98	E
106	30	46.09	E
106	31	50.83	E
106	32	55.57	E
106	34	0.30	E
106	35	5.04	E
106	40	28.71	E
106	41	33.44	E
106	42	38.17	E
106	44	47.63	E
106	45	52.37	E
106	46	57.09	E
106	49	6.55	E
106	50	11.28	E
106	51	16.01	E
106	52	20.73	E
106	53	25.45	E
106	54	30.18	E
106	55	34.90	E
106	56	39.63	E
107	3	7.95	E
107	7	26.82	E
107	9	36.25	E
105	45	26.68	E
105	46	31.43	E
106	27	31.81	E
106	30	46.02	E
106	31	50.76	E
106	40	28.63	E
106	41	33.36	E
106	42	38.10	E
106	45	52.28	E
106	48	1.74	E
106	54	30.09	E
106	55	34.81	E
107	2	3.14	E
107	3	7.86	E
107	5	17.29	E
107	6	22.01	E
107	12	50.28	E
105	44	21.89	E
105	45	26.64	E
105	46	31.39	E
106	25	22.26	E
106	26	27.00	E
106	27	31.74	E
106	28	36.48	E
106	29	41.22	E
106	30	45.95	E
106	31	50.69	E
106	32	55.42	E
106	40	28.55	E
106	41	33.28	E
106	42	38.01	E
106	45	52.20	E
106	46	56.93	E
106	48	1.66	E

252	-2.35118	106.818439
253	-2.351156	106.836418
254	-2.351059	106.908334
255	-2.351034	106.926312
256	-2.351009	106.944291
257	-2.350984	106.962269
258	-2.350881	107.034179
259	-2.3508	107.088109
260	-2.350773	107.106085
261	-2.350605	107.213939
262	-2.334091	105.721417
263	-2.334081	105.739404
264	-2.334072	105.757391
265	-2.333439	106.530727
266	-2.333419	106.548709
267	-2.333274	106.674577
268	-2.333231	106.710538
269	-2.333141	106.782457
270	-2.333071	106.836395
271	-2.333048	106.854374
272	-2.333024	106.872353
273	-2.332999	106.890331
274	-2.3329	106.962243
275	-2.332875	106.980221
276	-2.332798	107.034153
277	-2.332771	107.052129
278	-2.332745	107.070106
279	-2.332718	107.088082
280	-2.332553	107.195936
281	-2.332525	107.213911
282	-2.316007	105.703421
283	-2.315998	105.721408
284	-2.315989	105.739394
285	-2.315371	106.512726
286	-2.315351	106.530707
287	-2.315332	106.548689
288	-2.315312	106.56667
289	-2.315292	106.584652
290	-2.31523	106.638594
291	-2.315209	106.656575
292	-2.315188	106.674555
293	-2.315145	106.710516
294	-2.315056	106.782434
295	-2.314915	106.890307
296	-2.314891	106.908285
297	-2.314866	106.926263
298	-2.314842	106.944241
299	-2.314817	106.962218
300	-2.314792	106.980196
301	-2.314689	107.052103
302	-2.314662	107.07008
303	-2.314636	107.088056
304	-2.314472	107.195908
305	-2.314444	107.213883
306	-2.297204	106.584632
307	-2.297184	106.602612
308	-2.297164	106.620593
309	-2.297122	106.656554
310	-2.297101	106.674534
311	-2.296878	106.854327
312	-2.296854	106.872305
313	-2.296782	106.926239
314	-2.296758	106.944216
315	-2.296733	106.962194

2	21	4.25	S
2	21	4.16	S
2	21	3.81	S
2	21	3.72	S
2	21	3.63	S
2	21	3.54	S
2	21	3.17	S
2	21	2.88	S
2	21	2.78	S
2	21	2.18	S
2	20	2.73	S
2	20	2.69	S
2	20	2.66	S
2	20	0.38	S
2	20	0.31	S
2	19	59.79	S
2	19	59.63	S
2	19	59.31	S
2	19	59.06	S
2	19	58.97	S
2	19	58.89	S
2	19	58.80	S
2	19	58.44	S
2	19	58.35	S
2	19	58.07	S
2	19	57.98	S
2	19	57.88	S
2	19	57.78	S
2	19	57.19	S
2	19	57.09	S
2	18	57.63	S
2	18	57.59	S
2	18	57.56	S
2	18	55.34	S
2	18	55.26	S
2	18	55.20	S
2	18	55.12	S
2	18	55.05	S
2	18	54.83	S
2	18	54.75	S
2	18	54.68	S
2	18	54.52	S
2	18	54.20	S
2	18	53.69	S
2	18	53.61	S
2	18	53.52	S
2	18	53.43	S
2	18	53.34	S
2	18	53.25	S
2	18	52.88	S
2	18	52.78	S
2	18	52.69	S
2	18	52.10	S
2	18	52.00	S
2	17	49.93	S
2	17	49.86	S
2	17	49.79	S
2	17	49.64	S
2	17	49.56	S
2	17	48.76	S
2	17	48.67	S
2	17	48.42	S
2	17	48.33	S
2	17	48.24	S

106	49	6.38	E
106	50	11.10	E
106	54	30.00	E
106	55	34.72	E
106	56	39.45	E
106	57	44.17	E
107	2	3.04	E
107	5	17.19	E
107	6	21.91	E
107	12	50.18	E
105	43	17.10	E
105	44	21.85	E
105	45	26.61	E
106	31	50.62	E
106	32	55.35	E
106	40	28.48	E
106	42	37.94	E
106	46	56.85	E
106	50	11.02	E
106	51	15.75	E
106	52	20.47	E
106	53	25.19	E
106	57	44.07	E
106	58	48.80	E
107	2	2.95	E
107	3	7.66	E
107	4	12.38	E
107	5	17.10	E
107	11	45.37	E
107	12	50.08	E
105	42	12.32	E
105	43	17.07	E
105	44	21.82	E
106	30	45.81	E
106	31	50.55	E
106	32	55.28	E
106	34	0.01	E
106	35	4.75	E
106	38	18.94	E
106	39	23.67	E
106	40	28.40	E
106	42	37.86	E
106	46	56.76	E
106	53	25.11	E
106	54	29.83	E
106	55	34.55	E
106	56	39.27	E
106	57	43.98	E
106	58	48.71	E
107	3	7.57	E
107	4	12.29	E
107	5	17.00	E
107	11	45.27	E
107	12	49.98	E
106	35	4.68	E
106	36	9.40	E
106	37	14.13	E
106	39	23.59	E
106	40	28.32	E
106	51	15.58	E
106	52	20.30	E
106	55	34.46	E
106	56	39.18	E
106	57	43.90	E

316	-2.296554	107.088029
317	-2.279077	106.620573
318	-2.279056	106.638553
319	-2.279036	106.656533
320	-2.279015	106.674513
321	-2.278839	106.818347
322	-2.278816	106.836325
323	-2.278498	107.070028
324	-2.278471	107.088003
325	-2.278445	107.105979
326	-2.278419	107.123954
327	-2.278392	107.141929
328	-2.278365	107.159904
329	-2.278338	107.177879
330	-2.260969	106.638533
331	-2.260949	106.656513
332	-2.260799	106.782367
333	-2.260777	106.800346
334	-2.260754	106.818324
335	-2.260415	107.070002
336	-2.260389	107.087977
337	-2.26031	107.141902
338	-2.260283	107.159877
339	-2.243074	106.458707
340	-2.243037	106.494669
341	-2.242862	106.656492
342	-2.242757	106.746388
343	-2.242735	106.764367
344	-2.242358	107.052001
345	-2.242333	107.069976
346	-2.242307	107.087952
347	-2.224985	106.458689
348	-2.224967	106.47667
349	-2.224949	106.494651
350	-2.224692	106.728388
351	-2.224671	106.746367
352	-2.224275	107.051976
353	-2.206843	106.512613
354	-2.206824	106.530594
355	-2.206806	106.548574
356	-2.206729	106.620493
357	-2.206709	106.638473
358	-2.206689	106.656452
359	-2.206668	106.674431
360	-2.206648	106.69241
361	-2.206193	107.051951
362	-2.206117	107.105875
363	-2.188809	106.458654
364	-2.188791	106.476634
365	-2.188773	106.494615
366	-2.188755	106.512595
367	-2.188718	106.548555
368	-2.188699	106.566535
369	-2.188641	106.620474
370	-2.188562	106.69239
371	-2.188135	107.033951
372	-2.18811	107.051926
373	-2.188035	107.10585
374	-2.188009	107.123824
375	-2.17072	106.458636
376	-2.170649	106.530557
377	-2.17063	106.548537
378	-2.170612	106.566516

2	17	47.59	S
2	16	44.68	S
2	16	44.60	S
2	16	44.53	S
2	16	44.45	S
2	16	43.82	S
2	16	43.74	S
2	16	42.59	S
2	16	42.50	S
2	16	42.40	S
2	16	42.31	S
2	16	42.21	S
2	16	42.11	S
2	16	42.02	S
2	15	39.49	S
2	15	39.42	S
2	15	38.88	S
2	15	38.80	S
2	15	38.71	S
2	15	37.49	S
2	15	37.40	S
2	15	37.12	S
2	15	37.02	S
2	14	35.07	S
2	14	34.93	S
2	14	34.30	S
2	14	33.93	S
2	14	33.85	S
2	14	32.49	S
2	14	32.40	S
2	14	32.31	S
2	13	29.95	S
2	13	29.88	S
2	13	29.82	S
2	13	28.89	S
2	13	28.82	S
2	13	27.39	S
2	12	24.63	S
2	12	24.57	S
2	12	24.50	S
2	12	24.22	S
2	12	24.15	S
2	12	24.08	S
2	12	24.00	S
2	12	23.93	S
2	12	22.29	S
2	12	22.02	S
2	11	19.71	S
2	11	19.65	S
2	11	19.58	S
2	11	19.52	S
2	11	19.38	S
2	11	19.32	S
2	11	19.11	S
2	11	18.82	S
2	11	17.29	S
2	11	17.20	S
2	11	16.93	S
2	11	16.83	S
2	10	14.59	S
2	10	14.34	S
2	10	14.27	S
2	10	14.20	S

107	5	16.90	E
106	37	14.06	E
106	38	18.79	E
106	39	23.52	E
106	40	28.25	E
106	49	6.05	E
106	50	10.77	E
107	4	12.10	E
107	5	16.81	E
107	6	21.52	E
107	7	26.23	E
107	8	30.94	E
107	9	35.65	E
107	10	40.36	E
106	38	18.72	E
106	39	23.45	E
106	46	56.52	E
106	48	1.25	E
106	49	5.97	E
107	4	12.01	E
107	5	16.72	E
107	8	30.85	E
107	9	35.56	E
106	27	31.35	E
106	29	40.81	E
106	39	23.37	E
106	44	47.00	E
106	45	51.72	E
107	3	7.20	E
107	4	11.91	E
107	5	16.63	E
106	27	31.28	E
106	28	36.01	E
106	29	40.74	E
106	43	42.20	E
106	44	46.92	E
107	3	7.11	E
106	30	45.41	E
106	31	50.14	E
106	32	54.87	E
106	37	13.77	E
106	38	18.50	E
106	39	23.23	E
106	40	27.95	E
106	41	32.68	E
107	3	7.02	E
107	6	21.15	E
106	27	31.15	E
106	28	35.88	E
106	29	40.61	E
106	30	45.34	E
106	32	54.80	E
106	33	59.53	E
106	37	13.71	E
106	41	32.60	E
107	2	2.22	E
107	3	6.93	E
107	6	21.06	E
107	7	25.77	E
106	27	31.09	E
106	31	50.01	E
106	32	54.73	E
106	33	59.46	E

379	-2.170593	106.584496
380	-2.170554	106.620454
381	-2.170495	106.674391
382	-2.170475	106.692369
383	-2.170052	107.033927
384	-2.170027	107.051902
385	-2.169953	107.105825
386	-2.169928	107.123799
387	-2.169902	107.141773
388	-2.152794	106.27881
389	-2.152779	106.296791
390	-2.152763	106.314773
391	-2.152747	106.332754
392	-2.152732	106.350735
393	-2.152597	106.494579
394	-2.152579	106.512559
395	-2.152561	106.530539
396	-2.152542	106.548518
397	-2.152524	106.566498
398	-2.152505	106.584477
399	-2.152467	106.620435
400	-2.152448	106.638414
401	-2.152428	106.656393
402	-2.15211	106.926051
403	-2.152087	106.944027
404	-2.152064	106.962002
405	-2.151969	107.033903
406	-2.151871	107.1058
407	-2.15182	107.141747
408	-2.134704	106.278795
409	-2.134658	106.332738
410	-2.134642	106.350719
411	-2.134543	106.458602
412	-2.134526	106.476582
413	-2.134508	106.494562
414	-2.134455	106.5485
415	-2.134436	106.566479
416	-2.134399	106.602437
417	-2.13438	106.620416
418	-2.134361	106.638395
419	-2.134242	106.746263
420	-2.134026	106.926028
421	-2.13398	106.961979
422	-2.133957	106.979955
423	-2.13391	107.015904
424	-2.133886	107.033879
425	-2.133789	107.105775
426	-2.133764	107.123749
427	-2.133739	107.141722
428	-2.116455	106.458585
429	-2.116367	106.548482
430	-2.11633	106.58444
431	-2.116312	106.602419
432	-2.116235	106.674332
433	-2.116216	106.69231
434	-2.116156	106.746242
435	-2.116135	106.764219
436	-2.116115	106.782196
437	-2.116094	106.800173
438	-2.115873	106.979932
439	-2.11585	106.997906
440	-2.115827	107.015881
441	-2.115803	107.033855
442	-2.115779	107.051829

2	10	14.13	S
2	10	13.99	S
2	10	13.78	S
2	10	13.71	S
2	10	12.19	S
2	10	12.10	S
2	10	11.83	S
2	10	11.74	S
2	10	11.65	S
2	9	10.06	S
2	9	10.00	S
2	9	9.95	S
2	9	9.89	S
2	9	9.84	S
2	9	9.35	S
2	9	9.28	S
2	9	9.22	S
2	9	9.15	S
2	9	9.09	S
2	9	9.02	S
2	9	8.88	S
2	9	8.81	S
2	9	8.74	S
2	9	7.60	S
2	9	7.51	S
2	9	7.43	S
2	9	7.09	S
2	9	6.74	S
2	9	6.55	S
2	8	4.93	S
2	8	4.77	S
2	8	4.71	S
2	8	4.35	S
2	8	4.29	S
2	8	4.23	S
2	8	4.04	S
2	8	3.97	S
2	8	3.84	S
2	8	3.77	S
2	8	3.70	S
2	8	3.27	S
2	8	2.49	S
2	8	2.33	S
2	8	2.25	S
2	8	2.08	S
2	8	1.99	S
2	8	1.64	S
2	8	1.55	S
2	8	1.46	S
2	6	59.24	S
2	6	58.92	S
2	6	58.79	S
2	6	58.72	S
2	6	58.45	S
2	6	58.38	S
2	6	58.16	S
2	6	58.09	S
2	6	58.01	S
2	6	57.94	S
2	6	57.14	S
2	6	57.06	S
2	6	56.98	S
2	6	56.89	S
2	6	56.80	S

106	35	4.19	E
106	37	13.63	E
106	40	27.81	E
106	41	32.53	E
107	2	2.14	E
107	3	6.85	E
107	6	20.97	E
107	7	25.68	E
107	8	30.38	E
106	16	43.72	E
106	17	48.45	E
106	18	53.18	E
106	19	57.91	E
106	21	2.65	E
106	29	40.48	E
106	30	45.21	E
106	31	49.94	E
106	32	54.66	E
106	33	59.39	E
106	35	4.12	E
106	37	13.57	E
106	38	18.29	E
106	39	23.01	E
106	55	33.78	E
106	56	38.50	E
106	57	43.21	E
107	2	2.05	E
107	6	20.88	E
107	8	30.29	E
106	16	43.66	E
106	19	57.86	E
106	21	2.59	E
106	27	30.97	E
106	28	35.70	E
106	29	40.42	E
106	32	54.60	E
106	33	59.32	E
106	36	8.77	E
106	37	13.50	E
106	38	18.22	E
106	44	46.55	E
106	55	33.70	E
106	57	43.12	E
106	58	47.84	E
107	0	57.25	E
107	2	1.96	E
107	6	20.79	E
107	7	25.50	E
107	8	30.20	E
106	27	30.91	E
106	32	54.54	E
106	35	3.98	E
106	36	8.71	E
106	40	27.60	E
106	41	32.32	E
106	44	46.47	E
106	45	51.19	E
106	46	55.91	E
106	48	0.62	E
106	58	47.76	E
106	59	52.46	E
107	0	57.17	E
107	2	1.88	E
107	3	6.58	E

443	-2.115755	107.069803
444	-2.098129	106.692229
445	-2.09811	106.710268
446	-2.09809	106.728245
447	-2.09788	106.908008
448	-2.097858	106.925984
449	-2.097835	106.943959
450	-2.097813	106.961934
451	-2.09779	106.979909
452	-2.097767	106.997883
453	-2.09772	107.033832
454	-2.097697	107.051806
455	-2.097673	107.069779
456	-2.080004	106.728225
457	-2.079817	106.890011
458	-2.079795	106.907987
459	-2.079637	107.033808
460	-2.079614	107.051782
461	-2.061733	106.88999
462	-2.061531	107.051759

2	6	56.72	S
2	5	53.26	S
2	5	53.20	S
2	5	53.12	S
2	5	52.37	S
2	5	52.29	S
2	5	52.21	S
2	5	52.13	S
2	5	52.04	S
2	5	51.96	S
2	5	51.79	S
2	5	51.71	S
2	5	51.62	S
2	4	48.01	S
2	4	47.34	S
2	4	47.26	S
2	4	46.69	S
2	4	46.61	S
2	3	42.24	S
2	3	41.51	S

107	4	11.29	E
106	41	32.24	E
106	42	36.96	E
106	43	41.68	E
106	54	28.83	E
106	55	33.54	E
106	56	38.25	E
106	57	42.96	E
106	58	47.67	E
106	59	52.38	E
107	2	1.80	E
107	3	6.50	E
107	4	11.20	E
106	43	41.61	E
106	53	24.04	E
106	54	28.75	E
107	2	1.71	E
107	3	6.42	E
106	53	23.96	E
107	3	6.33	E

CATATAN :

BERLAKU MULAI 17 JANUARI 2020 HINGGA 21 JANUARI 2020