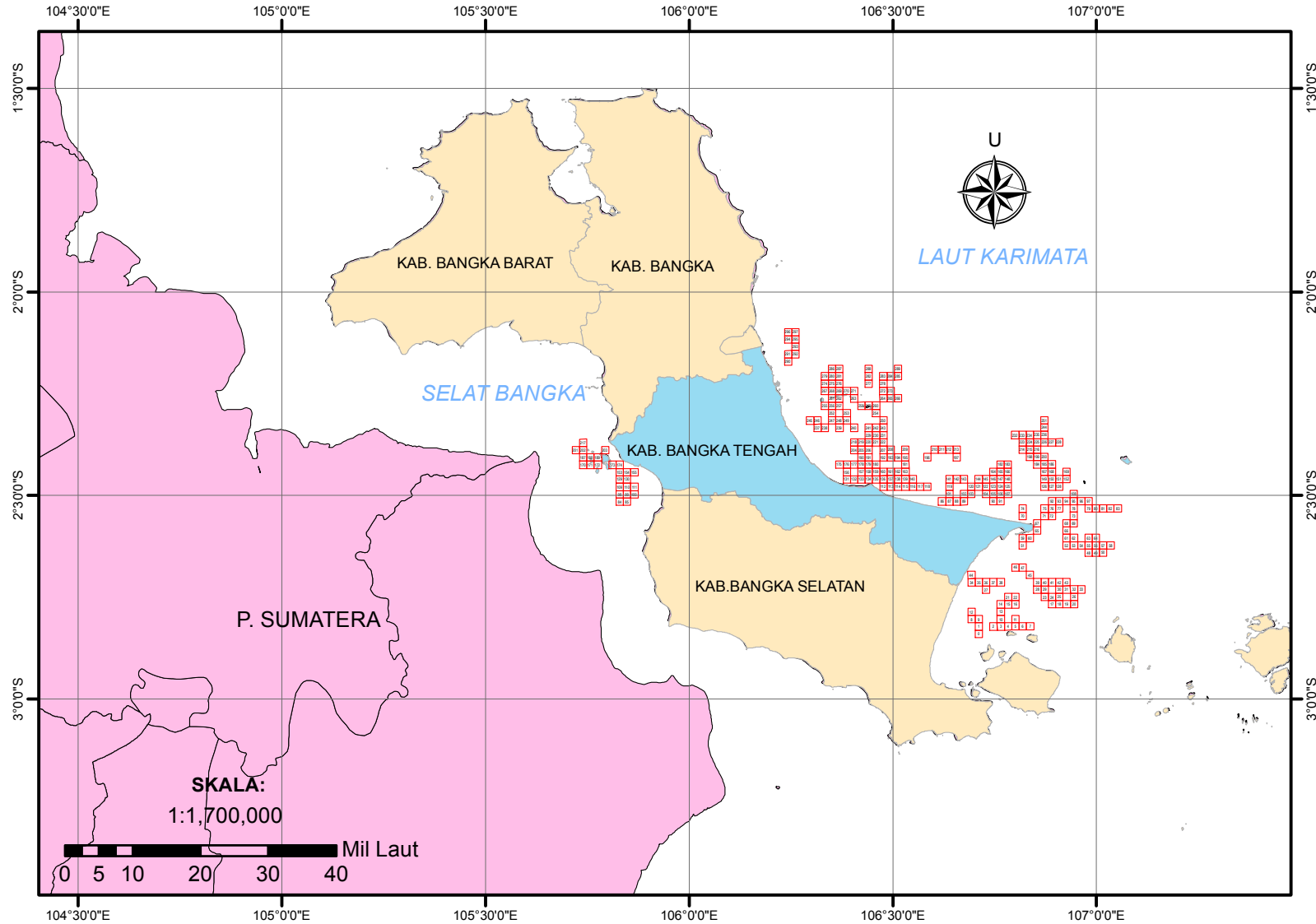
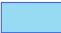
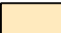




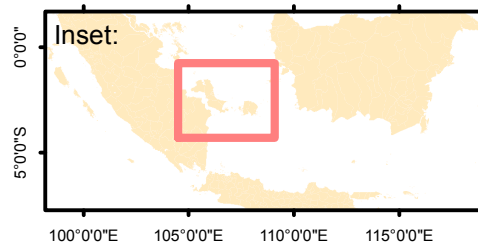


# SISTEM INFORMASI DAERAH POTENSIAL PENANGKAPAN IKAN PERAIRAN KABUPATEN BANGKA TENGAH TANGGAL 21 JULI 2020



## Legenda:

-  Kab. Bangka Tengah
-  Prov. Bangka Belitung
-  P. Sumatera
-  Daerah Potensial Penangkapan Ikan



Dibuat oleh:  
**Dinas Perikanan  
Kabupaten Bangka Tengah**

- Sumber Data:
1. Data Ocean Color
  2. Data NCEP
  3. Peta RBI Dijital

**CATATAN : BERLAKU MULAI 21 JULI 2020 HINGGA 24 JULI 2020**

NO	Lat	Lon
	Dec	Dec
0	-2.839643	106.711216
1	-2.821557	106.71119
2	-2.821503	106.747164
3	-2.821476	106.76515
4	-2.821448	106.783137
5	-2.82142	106.801123
6	-2.821392	106.819109
7	-2.821364	106.837095
8	-2.803497	106.693176
9	-2.803471	106.711163
10	-2.80339	106.765123
11	-2.803335	106.801095
12	-2.785411	106.693151
13	-2.785304	106.765096
14	-2.767219	106.765069
15	-2.767192	106.783055
16	-2.767165	106.80104
17	-2.767024	106.890965
18	-2.766995	106.908949
19	-2.766966	106.926933
20	-2.766936	106.944917
21	-2.749106	106.783028
22	-2.749079	106.801013
23	-2.748968	106.872952
24	-2.74894	106.890936
25	-2.748911	106.90892
26	-2.748852	106.944888
27	-2.7311	106.729045
28	-2.730912	106.85494
29	-2.730884	106.872924
30	-2.730827	106.908892
31	-2.730798	106.926875
32	-2.730769	106.944859
33	-2.730739	106.962842
34	-2.713066	106.693049
35	-2.71304	106.711034
36	-2.713014	106.729019
37	-2.712988	106.747005
38	-2.712962	106.76499
39	-2.712827	106.854912
40	-2.712799	106.872896
41	-2.712771	106.89088
42	-2.712743	106.908863
43	-2.712714	106.926847
44	-2.694979	106.693023
45	-2.69477	106.836901
46	-2.676738	106.800906
47	-2.676712	106.81889
48	-2.640293	106.98068
49	-2.640264	106.998661
50	-2.640235	107.016642
51	-2.622457	106.818811
52	-2.622294	106.926706
53	-2.622266	106.944688
54	-2.622238	106.962669
55	-2.62221	106.980651
56	-2.622181	106.998632
57	-2.622152	107.016613
58	-2.622123	107.034594
59	-2.604371	106.818785
60	-2.604345	106.836767
61	-2.60421	106.926678
62	-2.604183	106.94466
63	-2.604126	106.980623
64	-2.604098	106.998604
65	-2.586234	106.854724
66	-2.586126	106.926651
67	-2.568149	106.854697
68	-2.568042	106.926624
69	-2.568015	106.944605
70	-2.550116	106.818708
71	-2.550038	106.872653
72	-2.550012	106.890634
73	-2.549931	106.944578
74	-2.532031	106.818682
75	-2.531954	106.872627
76	-2.531928	106.890608
77	-2.531901	106.908589
78	-2.531847	106.944551
79	-2.531793	106.980511
80	-2.531765	106.998491
81	-2.531737	107.016471
82	-2.531709	107.034451
83	-2.53168	107.05243
84	-2.514955	105.829447
85	-2.514943	105.847436
86	-2.514208	106.620849
87	-2.514185	106.638833
88	-2.514163	106.656816
89	-2.51414	106.674799
90	-2.514045	106.74673
91	-2.51402	106.764712
92	-2.513843	106.890582
93	-2.513817	106.908563
94	-2.51379	106.926543
95	-2.513764	106.944524
96	-2.513737	106.962504
97	-2.513709	106.980484
98	-2.496863	105.829436
99	-2.496851	105.847424
100	-2.496839	105.865413
101	-2.496099	106.63881

Latitude			
DD	MM	SS	Position
2	50	22.71	S
2	49	17.61	S
2	49	17.41	S
2	49	17.31	S
2	49	17.21	S
2	49	17.11	S
2	49	17.01	S
2	49	16.91	S
2	48	12.59	S
2	48	12.50	S
2	48	12.20	S
2	48	12.01	S
2	47	7.48	S
2	47	7.09	S
2	46	1.99	S
2	46	1.89	S
2	46	1.79	S
2	46	1.29	S
2	46	1.18	S
2	46	1.08	S
2	46	0.97	S
2	44	56.78	S
2	44	56.68	S
2	44	56.28	S
2	44	56.18	S
2	44	56.08	S
2	44	55.87	S
2	43	51.96	S
2	43	51.28	S
2	43	51.18	S
2	43	50.98	S
2	43	50.87	S
2	43	50.77	S
2	43	50.66	S
2	42	47.04	S
2	42	46.94	S
2	42	46.85	S
2	42	46.76	S
2	42	46.66	S
2	42	46.18	S
2	42	46.08	S
2	42	45.98	S
2	42	45.87	S
2	42	45.77	S
2	41	41.92	S
2	41	41.17	S
2	40	36.26	S
2	40	36.16	S
2	38	25.05	S
2	38	24.95	S
2	38	24.85	S
2	37	20.85	S
2	37	20.26	S
2	37	20.16	S
2	37	20.06	S
2	37	19.96	S
2	37	19.85	S
2	37	19.75	S
2	37	19.64	S
2	36	15.74	S
2	36	15.64	S
2	36	15.16	S
2	36	15.06	S
2	36	14.85	S
2	36	14.75	S
2	35	10.44	S
2	35	10.05	S
2	34	5.34	S
2	34	4.95	S
2	34	4.85	S
2	33	0.42	S
2	33	0.14	S
2	33	0.04	S
2	32	59.75	S
2	31	55.31	S
2	31	55.03	S
2	31	54.94	S
2	31	54.84	S
2	31	54.65	S
2	31	54.45	S
2	31	54.35	S
2	31	54.25	S
2	31	54.15	S
2	31	54.05	S
2	30	53.84	S
2	30	53.79	S
2	30	51.15	S
2	30	51.07	S
2	30	50.99	S
2	30	50.90	S
2	30	50.56	S
2	30	50.47	S
2	30	49.83	S
2	30	49.74	S
2	30	49.64	S
2	30	49.55	S
2	30	49.45	S
2	30	49.35	S
2	29	48.71	S
2	29	48.66	S
2	29	48.62	S
2	29	45.96	S

Longitude			
DD	MM	SS	Position
106	42	40.38	E
106	42	40.28	E
106	44	49.79	E
106	45	54.54	E
106	46	59.29	E
106	48	4.04	E
106	49	8.79	E
106	50	13.54	E
106	41	35.43	E
106	42	40.19	E
106	45	54.44	E
106	48	3.94	E
106	41	35.34	E
106	45	54.35	E
106	45	54.25	E
106	46	59.00	E
106	48	3.74	E
106	53	27.47	E
106	54	32.22	E
106	55	36.96	E
106	56	41.70	E
106	46	58.90	E
106	48	3.65	E
106	52	22.63	E
106	53	27.37	E
106	54	32.11	E
106	56	41.60	E
106	43	44.56	E
106	51	17.78	E
106	52	22.53	E
106	54	32.01	E
106	55	36.75	E
106	56	41.49	E
106	57	46.23	E
106	41	34.98	E
106	42	39.72	E
106	43	44.47	E
106	44	49.22	E
106	45	53.96	E
106	51	17.68	E
106	52	22.43	E
106	53	27.17	E
106	54	31.91	E
106	55	36.65	E
106	41	34.88	E
106	50	12.84	E
106	48	3.26	E
106	49	8.00	E
106	58	50.45	E
106	59	55.18	E
107	0	59.91	E
106	49	7.72	E
106	55	36.14	E
106	56	40.88	E
106	57	45.61	E
106	58	50.34	E
106	59	55.08	E
107	0	59.81	E
107	2	4.54	E
106	49	7.63	E
106	50	12.36	E
106	55	36.04	E
106	56	40.78	E
106	58	50.24	E
106	59	54.97	E
106	51	17.01	E
106	55	35.94	E
106	51	16.91	E
106	55	35.85	E
106	56	40.58	E
106	49	7.35	E
106	52	21.55	E
106	53	26.28	E
106	56	40.48	E
106	49	7.26	E
106	52	21.46	E
106	53	26.19	E
106	54	30.92	E
106	56	40.38	E
106	58	49.84	E
106	59	54.57	E
107	0	59.30	E
107	2	4.02	E
107	3	8.75	E
105	49	46.01	E
105	50	50.77	E
106	37	15.06	E
106	38	19.80	E
106	39	24.54	E
106	40	29.28	E
106	44	48.23	E
106	45	52.96	E
106	53	26.10	E
106	54	30.83	E
106	55	35.55	E
106	56	40.29	E
106	57	45.01	E
106	58	49.74	E
105	49	45.97	E
105	50	50.73	E
105	51	55.49	E
106	38	19.72	E

**CATATAN : BERLAKU MULAI 21 JULI 2020 HINGGA 24 JULI 2020**

102	-2.496053	106.674776	2	29	45.79	S	106	40	29.19	E
103	-2.49603	106.692759	2	29	45.71	S	106	41	33.93	E
104	-2.495983	106.728723	2	29	45.54	S	106	43	43.40	E
105	-2.495959	106.746706	2	29	45.45	S	106	44	48.14	E
106	-2.495935	106.764687	2	29	45.37	S	106	45	52.87	E
107	-2.49591	106.782669	2	29	45.28	S	106	46	57.61	E
108	-2.49568	106.944497	2	29	44.45	S	106	56	40.19	E
109	-2.47877	105.829424	2	28	43.57	S	105	49	45.93	E
110	-2.478759	105.847413	2	28	43.53	S	105	50	50.69	E
111	-2.478747	105.865401	2	28	43.49	S	105	51	55.44	E
112	-2.478203	106.476936	2	28	41.53	S	106	28	36.97	E
113	-2.478183	106.494921	2	28	41.46	S	106	29	41.72	E
114	-2.478162	106.512904	2	28	41.38	S	106	30	46.45	E
115	-2.478142	106.530888	2	28	41.31	S	106	31	51.20	E
116	-2.478121	106.548872	2	28	41.24	S	106	32	55.94	E
117	-2.478099	106.566855	2	28	41.16	S	106	34	0.68	E
118	-2.478078	106.584839	2	28	41.08	S	106	35	5.42	E
119	-2.478012	106.638788	2	28	40.84	S	106	38	19.64	E
120	-2.477944	106.692736	2	28	40.60	S	106	41	33.85	E
121	-2.47792	106.710718	2	28	40.51	S	106	42	38.58	E
122	-2.477897	106.7287	2	28	40.43	S	106	43	43.32	E
123	-2.477873	106.746682	2	28	40.34	S	106	44	48.06	E
124	-2.477849	106.764663	2	28	40.26	S	106	45	52.79	E
125	-2.477825	106.782645	2	28	40.17	S	106	46	57.52	E
126	-2.4777	106.87255	2	28	39.72	S	106	52	21.18	E
127	-2.477675	106.89053	2	28	39.63	S	106	53	25.91	E
128	-2.477649	106.908511	2	28	39.54	S	106	54	30.64	E
129	-2.460678	105.829413	2	27	38.44	S	105	49	45.89	E
130	-2.460666	105.847401	2	27	38.40	S	105	50	50.64	E
131	-2.460212	106.386995	2	27	36.76	S	106	23	13.18	E
132	-2.460193	106.404979	2	27	36.69	S	106	24	17.92	E
133	-2.460174	106.422964	2	27	36.63	S	106	25	22.67	E
134	-2.460155	106.440948	2	27	36.56	S	106	26	27.41	E
135	-2.460135	106.458932	2	27	36.49	S	106	27	32.16	E
136	-2.460115	106.476916	2	27	36.41	S	106	28	36.90	E
137	-2.460095	106.4949	2	27	36.34	S	106	29	41.64	E
138	-2.460074	106.512884	2	27	36.27	S	106	30	46.38	E
139	-2.460054	106.530868	2	27	36.19	S	106	31	51.12	E
140	-2.460033	106.548851	2	27	36.12	S	106	32	55.86	E
141	-2.459925	106.638766	2	27	35.73	S	106	38	19.56	E
142	-2.459903	106.656748	2	27	35.65	S	106	39	24.29	E
143	-2.45988	106.674731	2	27	35.57	S	106	40	29.03	E
144	-2.459834	106.710695	2	27	35.40	S	106	42	38.50	E
145	-2.459811	106.728677	2	27	35.32	S	106	43	43.24	E
146	-2.459787	106.746658	2	27	35.23	S	106	44	47.97	E
147	-2.459764	106.76464	2	27	35.15	S	106	45	52.70	E
148	-2.45974	106.782621	2	27	35.06	S	106	46	57.44	E
149	-2.459616	106.872525	2	27	34.62	S	106	52	21.09	E
150	-2.45959	106.890505	2	27	34.52	S	106	53	25.82	E
151	-2.459564	106.908485	2	27	34.43	S	106	54	30.55	E
152	-2.459538	106.926465	2	27	34.34	S	106	55	35.27	E
153	-2.442585	105.829402	2	26	33.31	S	105	49	45.85	E
154	-2.442574	105.84739	2	26	33.27	S	105	50	50.60	E
155	-2.442563	105.865377	2	26	33.23	S	105	51	55.36	E
156	-2.442123	106.386976	2	26	31.64	S	106	23	13.11	E
157	-2.442085	106.422945	2	26	31.51	S	106	25	22.60	E
158	-2.442066	106.440929	2	26	31.44	S	106	26	27.34	E
159	-2.442047	106.458913	2	26	31.37	S	106	27	32.09	E
160	-2.442027	106.476897	2	26	31.30	S	106	28	36.83	E
161	-2.442007	106.49488	2	26	31.23	S	106	29	41.57	E
162	-2.441987	106.512864	2	26	31.15	S	106	30	46.31	E
163	-2.441966	106.530847	2	26	31.08	S	106	31	51.05	E
164	-2.441702	106.746635	2	26	30.13	S	106	44	47.89	E
165	-2.441678	106.764616	2	26	30.04	S	106	45	52.62	E
166	-2.441654	106.782597	2	26	29.95	S	106	46	57.35	E
167	-2.441531	106.872499	2	26	29.51	S	106	52	21.00	E
168	-2.441506	106.890479	2	26	29.42	S	106	53	25.72	E
169	-2.441454	106.926439	2	26	29.23	S	106	55	35.18	E
170	-2.424545	105.739452	2	25	28.36	S	105	44	22.03	E
171	-2.424535	105.75744	2	25	28.33	S	105	45	26.78	E
172	-2.424525	105.775428	2	25	28.29	S	105	46	31.54	E
173	-2.424504	105.811403	2	25	28.21	S	105	48	41.05	E
174	-2.424493	105.829391	2	25	28.17	S	105	49	45.81	E
175	-2.424053	106.368974	2	25	26.59	S	106	22	8.31	E
176	-2.424034	106.386958	2	25	26.52	S	106	23	13.05	E
177	-2.424015	106.404942	2	25	26.45	S	106	24	17.79	E
178	-2.423997	106.422926	2	25	26.39	S	106	25	22.53	E
179	-2.423977	106.44091	2	25	26.32	S	106	26	27.28	E
180	-2.423958	106.458893	2	25	26.25	S	106	27	32.01	E
181	-2.423878	106.530827	2	25	25.96	S	106	31	50.98	E
182	-2.423592	106.764592	2	25	24.93	S	106	45	52.53	E
183	-2.423569	106.782573	2	25	24.85	S	106	46	57.26	E
184	-2.423471	106.854495	2	25	24.50	S	106	51	16.18	E
185	-2.423447	106.872475	2	25	24.41	S	106	52	20.91	E
186	-2.423421	106.890454	2	25	24.32	S	106	53	25.63	E
187	-2.406453	105.739442	2	24	23.23	S	105	44	21.99	E
188	-2.406443	105.75743	2	24	23.19	S	105	45	26.75	E
189	-2.406433	105.775417	2	24	23.16	S	105	46	31.50	E
190	-2.405908	106.422907	2	24	21.27	S	106	25	22.47	E
191	-2.405889	106.440891	2	24	21.20	S	106	26	27.21	E
192	-2.40585	106.476857	2	24	21.06	S	106	28	36.69	E
193	-2.405831	106.494841	2	24	20.99	S	106	29	41.43	E
194	-2.405811	106.512824	2	24	20.92	S	106	30	46.17	E
195	-2.40579	106.530806	2	24	20.84	S	106	31	50.90	E
196	-2.405729	106.584754	2	24	20.62	S	106	35	5.11	E
197	-2.405643	106.656682	2	24	20.31	S	106	39	24.06	E
198	-2.405411	106.83649	2	24	19.48	S	106	50	11.36	E
199	-2.405387	106.85447	2	24	19.39	S	106	51	16.09	E
200	-2.405362	106.87245	2	24	19.30	S	106	52	20.82	E
201	-2.388369	105.721445	2	23	18.13	S	105	43	17.20	E
202	-2.38836	105.739432	2	23	18.10	S	105	44	21.96	E
203	-2.38833	105.793395	2	23	17.99	S	105	47	36.22	E
204	-2.387838	106.404905	2	23	16.22	S	106	24	17.66	E
205	-2.387819	106.422888	2	23	16.15	S	106	25	22.40	E
206	-2.3878	106.440872	2	23	16.08	S	106	26	27.14	E
207	-2.387762	106.476838	2	23	15.94	S	106	28	36.62	E

CATATAN : BERLAKU MULAI 21 JULI 2020 HINGGA 24 JULI 2020

208	-2.387742	106.494821	2	23	15.87	S	106	29	41.36	E
209	-2.387703	106.530786	2	23	15.73	S	106	31	50.83	E
210	-2.38762	106.602715	2	23	15.43	S	106	36	9.77	E
211	-2.387599	106.620697	2	23	15.36	S	106	37	14.51	E
212	-2.387578	106.638679	2	23	15.28	S	106	38	19.24	E
213	-2.387556	106.65666	2	23	15.20	S	106	39	23.98	E
214	-2.38735	106.818486	2	23	14.46	S	106	49	6.55	E
215	-2.387326	106.836466	2	23	14.37	S	106	50	11.28	E
216	-2.387302	106.854446	2	23	14.29	S	106	51	16.01	E
217	-2.370267	105.739423	2	22	12.96	S	105	44	21.92	E
218	-2.369749	106.404887	2	22	11.10	S	106	24	17.59	E
219	-2.369731	106.42287	2	22	11.03	S	106	25	22.33	E
220	-2.369712	106.440853	2	22	10.96	S	106	26	27.07	E
221	-2.369693	106.458836	2	22	10.89	S	106	27	31.81	E
222	-2.369674	106.476819	2	22	10.83	S	106	28	36.55	E
223	-2.369265	106.818463	2	22	9.35	S	106	49	6.47	E
224	-2.369241	106.836442	2	22	9.27	S	106	50	11.19	E
225	-2.369217	106.854422	2	22	9.18	S	106	51	15.92	E
226	-2.369193	106.872401	2	22	9.09	S	106	52	20.64	E
227	-2.369168	106.89038	2	22	9.00	S	106	53	25.37	E
228	-2.369143	106.908359	2	22	8.91	S	106	54	30.09	E
229	-2.351623	106.440834	2	21	5.84	S	106	26	27.00	E
230	-2.351604	106.458817	2	21	5.77	S	106	27	31.74	E
231	-2.351585	106.4768	2	21	5.71	S	106	28	36.48	E
232	-2.351203	106.80046	2	21	4.33	S	106	48	1.66	E
233	-2.35118	106.818439	2	21	4.25	S	106	49	6.38	E
234	-2.351156	106.836418	2	21	4.16	S	106	50	11.10	E
235	-2.351132	106.854398	2	21	4.08	S	106	51	15.83	E
236	-2.351108	106.872377	2	21	3.99	S	106	52	20.56	E
237	-2.333659	106.314934	2	20	1.17	S	106	18	53.76	E
238	-2.333642	106.332918	2	20	1.11	S	106	19	58.50	E
239	-2.333607	106.368884	2	20	0.99	S	106	22	7.98	E
240	-2.333571	106.40485	2	20	0.86	S	106	24	17.46	E
241	-2.333535	106.440816	2	20	0.73	S	106	26	26.94	E
242	-2.333516	106.458798	2	20	0.66	S	106	27	31.67	E
243	-2.333497	106.476781	2	20	0.59	S	106	28	36.41	E
244	-2.333024	106.872353	2	19	58.89	S	106	52	20.47	E
245	-2.315586	106.296934	2	18	56.11	S	106	17	48.96	E
246	-2.315569	106.314918	2	18	56.05	S	106	18	53.70	E
247	-2.315535	106.350884	2	18	55.93	S	106	21	3.18	E
248	-2.315518	106.368867	2	18	55.86	S	106	22	7.92	E
249	-2.3155	106.38685	2	18	55.80	S	106	23	12.66	E
250	-2.315409	106.476762	2	18	55.47	S	106	28	36.34	E
251	-2.314939	106.872329	2	18	53.78	S	106	52	20.38	E
252	-2.297446	106.350867	2	17	50.81	S	106	21	3.12	E
253	-2.297411	106.386832	2	17	50.68	S	106	23	12.60	E
254	-2.297339	106.458761	2	17	50.42	S	106	27	31.54	E
255	-2.279373	106.332867	2	16	45.74	S	106	19	58.32	E
256	-2.279357	106.35085	2	16	45.69	S	106	21	3.06	E
257	-2.27934	106.368832	2	16	45.62	S	106	22	7.80	E
258	-2.279287	106.422779	2	16	45.43	S	106	25	22.00	E
259	-2.279269	106.440761	2	16	45.37	S	106	26	26.74	E
260	-2.279251	106.458743	2	16	45.30	S	106	27	31.47	E
261	-2.261267	106.350833	2	15	40.56	S	106	21	3.00	E
262	-2.26125	106.368815	2	15	40.50	S	106	22	7.73	E
263	-2.261216	106.40478	2	15	40.38	S	106	24	17.21	E
264	-2.261144	106.476706	2	15	40.12	S	106	28	36.14	E
265	-2.261126	106.494688	2	15	40.05	S	106	29	40.88	E
266	-2.261107	106.512669	2	15	39.99	S	106	30	45.61	E
267	-2.243195	106.332834	2	14	35.50	S	106	19	58.20	E
268	-2.243178	106.350816	2	14	35.44	S	106	21	2.94	E
269	-2.243161	106.368799	2	14	35.38	S	106	22	7.68	E
270	-2.243144	106.386781	2	14	35.32	S	106	23	12.41	E
271	-2.243127	106.404762	2	14	35.26	S	106	24	17.14	E
272	-2.243056	106.476688	2	14	35.00	S	106	28	36.08	E
273	-2.243037	106.494669	2	14	34.93	S	106	29	40.81	E
274	-2.225105	106.332818	2	13	30.38	S	106	19	58.14	E
275	-2.225089	106.3508	2	13	30.32	S	106	21	2.88	E
276	-2.225072	106.368782	2	13	30.26	S	106	22	7.62	E
277	-2.225003	106.440708	2	13	30.01	S	106	26	26.55	E
278	-2.224967	106.47667	2	13	29.88	S	106	28	36.01	E
279	-2.207016	106.332802	2	12	25.26	S	106	19	58.09	E
280	-2.206999	106.350784	2	12	25.20	S	106	21	2.82	E
281	-2.206983	106.368765	2	12	25.14	S	106	22	7.55	E
282	-2.206915	106.44069	2	12	24.89	S	106	26	26.48	E
283	-2.206879	106.476652	2	12	24.76	S	106	28	35.95	E
284	-2.206861	106.494633	2	12	24.70	S	106	29	40.68	E
285	-2.206843	106.512613	2	12	24.63	S	106	30	45.41	E
286	-2.18891	106.350767	2	11	20.08	S	106	21	2.76	E
287	-2.188894	106.368749	2	11	20.02	S	106	22	7.50	E
288	-2.188826	106.440673	2	11	19.77	S	106	26	26.42	E
289	-2.188755	106.512595	2	11	19.52	S	106	30	45.34	E
290	-2.170914	106.242861	2	10	15.29	S	106	14	34.30	E
291	-2.152824	106.242846	2	9	10.17	S	106	14	34.25	E
292	-2.152809	106.260828	2	9	10.11	S	106	15	38.98	E
293	-2.134719	106.260813	2	8	4.99	S	106	15	38.93	E
294	-2.116644	106.242817	2	6	59.92	S	106	14	34.14	E
295	-2.116629	106.260799	2	6	59.86	S	106	15	38.88	E
296	-2.098554	106.242803	2	5	54.79	S	106	14	34.09	E
297	-2.098539	106.260784	2	5	54.74	S	106	15	38.82	E