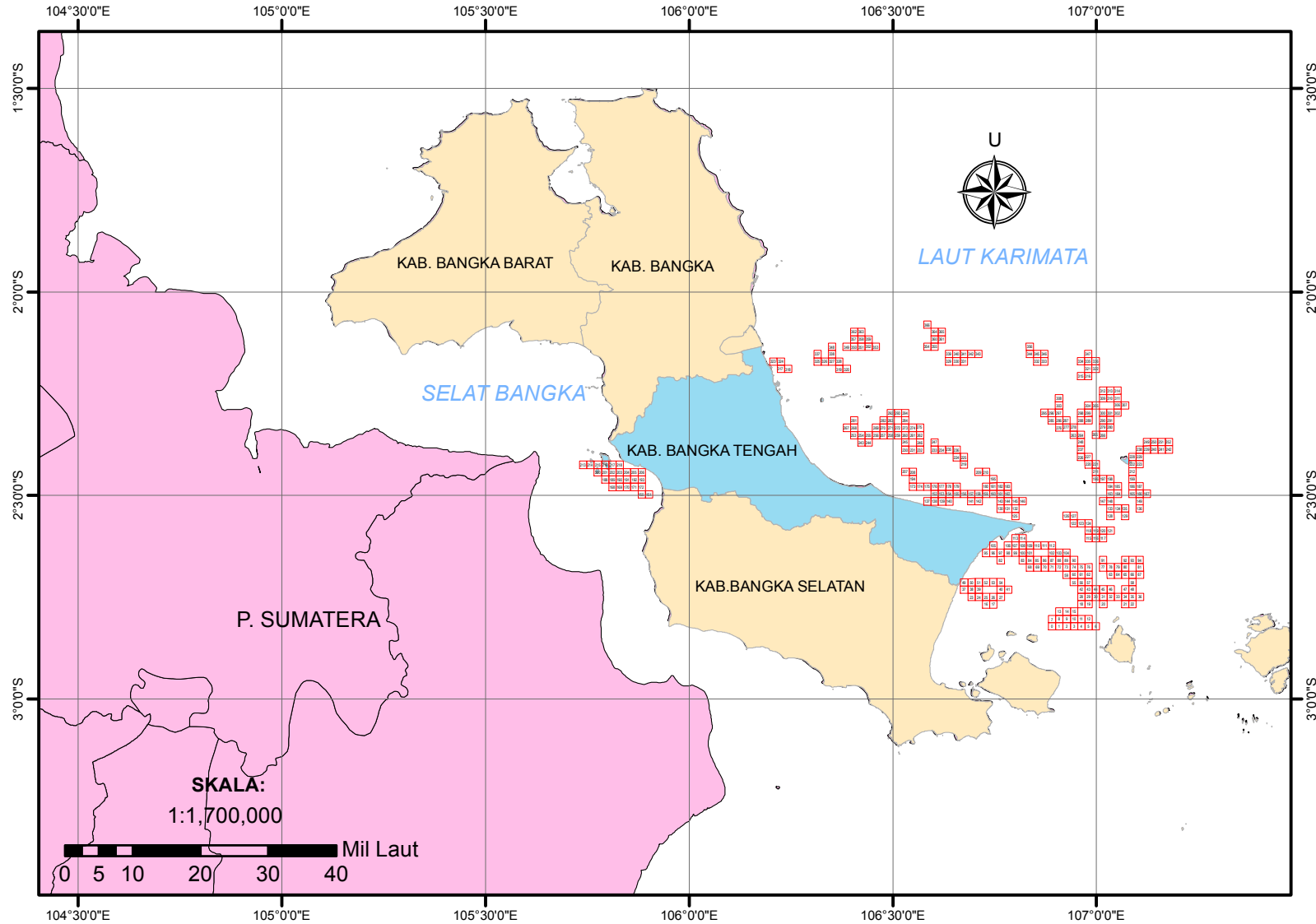
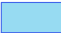
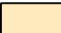




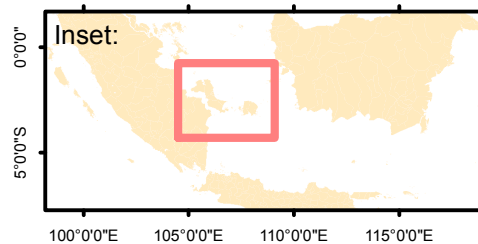


# SISTEM INFORMASI DAERAH POTENSIAL PENANGKAPAN IKAN PERAIRAN KABUPATEN BANGKA TENGAH TANGGAL 23 JUNI 2020



## Legenda:

-  Kab. Bangka Tengah
-  Prov. Bangka Belitung
-  P. Sumatera
-  Daerah Potensial Penangkapan Ikan



Dibuat oleh:  
**Dinas Perikanan  
Kabupaten Bangka Tengah**

- Sumber Data:
1. Data Ocean Color
  2. Data NCEP
  3. Peta RBI Dijital

**CATATAN : BERLAKU MULAI 23 JUNI 2020 HINGGA 26 JUNI 2020**

NO	Lat	Lon	Latitude				Longitude			
	Dec	Dec	DD	MM	SS	Position	DD	MM	SS	Position
0	-2.821277	106.891052	2	49	16.60	S	106	53	27.79	E
1	-2.821247	106.909037	2	49	16.49	S	106	54	32.53	E
2	-2.821217	106.927022	2	49	16.38	S	106	55	37.28	E
3	-2.821187	106.945007	2	49	16.27	S	106	56	42.03	E
4	-2.821157	106.962991	2	49	16.17	S	106	57	46.77	E
5	-2.821126	106.980976	2	49	16.05	S	106	58	51.51	E
6	-2.821095	106.99896	2	49	15.94	S	106	59	56.26	E
7	-2.803192	106.891023	2	48	11.49	S	106	53	27.68	E
8	-2.803163	106.909008	2	48	11.39	S	106	54	32.43	E
9	-2.803133	106.926992	2	48	11.28	S	106	55	37.17	E
10	-2.803104	106.944977	2	48	11.17	S	106	56	41.92	E
11	-2.803073	106.962961	2	48	11.06	S	106	57	46.66	E
12	-2.803043	106.980945	2	48	10.95	S	106	58	51.40	E
13	-2.785079	106.908978	2	47	6.28	S	106	54	32.32	E
14	-2.78505	106.926963	2	47	6.18	S	106	55	37.07	E
15	-2.78502	106.944947	2	47	6.07	S	106	56	41.81	E
16	-2.767272	106.729097	2	46	2.18	S	106	43	44.75	E
17	-2.767246	106.747083	2	46	2.09	S	106	44	49.50	E
18	-2.766906	106.962901	2	46	0.86	S	106	57	46.44	E
19	-2.766876	106.980885	2	46	0.75	S	106	58	51.19	E
20	-2.766815	107.016851	2	46	0.53	S	107	1	0.66	E
21	-2.766722	107.0708	2	46	0.20	S	107	4	14.88	E
22	-2.76669	107.088782	2	46	0.08	S	107	5	19.62	E
23	-2.749238	106.693099	2	44	57.26	S	106	41	35.16	E
24	-2.749212	106.711085	2	44	57.16	S	106	42	39.91	E
25	-2.749186	106.729071	2	44	57.07	S	106	43	44.66	E
26	-2.74916	106.747057	2	44	56.98	S	106	44	49.41	E
27	-2.749133	106.765042	2	44	56.88	S	106	45	54.15	E
28	-2.748823	106.962872	2	44	55.76	S	106	57	46.34	E
29	-2.748793	106.980855	2	44	55.65	S	106	58	51.08	E
30	-2.748763	106.998838	2	44	55.55	S	106	59	55.82	E
31	-2.748732	107.016821	2	44	55.44	S	107	1	0.56	E
32	-2.748702	107.034804	2	44	55.33	S	107	2	5.29	E
33	-2.748671	107.052786	2	44	55.22	S	107	3	10.03	E
34	-2.74864	107.070769	2	44	55.10	S	107	4	14.77	E
35	-2.748608	107.088751	2	44	54.99	S	107	5	19.50	E
36	-2.748576	107.106733	2	44	54.87	S	107	6	24.24	E
37	-2.731177	106.675088	2	43	52.24	S	106	40	30.32	E
38	-2.731152	106.693074	2	43	52.15	S	106	41	35.07	E
39	-2.731126	106.711106	2	43	52.05	S	106	42	39.82	E
40	-2.731048	106.765016	2	43	51.77	S	106	45	54.06	E
41	-2.731021	106.783001	2	43	51.68	S	106	46	58.80	E
42	-2.730739	106.962842	2	43	50.66	S	106	57	46.23	E
43	-2.73071	106.980825	2	43	50.56	S	106	58	50.97	E
44	-2.73068	106.998808	2	43	50.45	S	106	59	55.71	E
45	-2.73065	107.016791	2	43	50.34	S	107	1	0.45	E
46	-2.730619	107.034773	2	43	50.23	S	107	2	5.18	E
47	-2.730557	107.070738	2	43	50.01	S	107	4	14.66	E
48	-2.730526	107.088719	2	43	49.89	S	107	5	19.39	E
49	-2.713091	106.675063	2	42	47.13	S	106	40	30.23	E
50	-2.713066	106.693049	2	42	47.04	S	106	41	34.98	E
51	-2.71304	106.711034	2	42	46.94	S	106	42	39.72	E
52	-2.713014	106.729019	2	42	46.85	S	106	43	44.47	E
53	-2.712988	106.747005	2	42	46.76	S	106	44	49.22	E
54	-2.712962	106.76499	2	42	46.66	S	106	45	53.96	E
55	-2.712685	106.94483	2	42	45.67	S	106	56	41.39	E
56	-2.712656	106.962813	2	42	45.56	S	106	57	46.13	E
57	-2.712626	106.980796	2	42	45.45	S	106	58	50.87	E
58	-2.712444	107.088688	2	42	44.80	S	107	5	19.28	E
59	-2.69463	106.926818	2	41	40.67	S	106	55	36.54	E
60	-2.694601	106.944801	2	41	40.56	S	106	56	41.28	E
61	-2.694572	106.962784	2	41	40.46	S	106	57	46.02	E
62	-2.694543	106.980766	2	41	40.35	S	106	58	50.76	E
63	-2.694454	107.034713	2	41	40.03	S	107	2	4.97	E
64	-2.694423	107.052694	2	41	39.92	S	107	3	9.70	E
65	-2.694393	107.070676	2	41	39.81	S	107	4	14.43	E
66	-2.694362	107.088657	2	41	39.70	S	107	5	19.17	E
67	-2.694331	107.106638	2	41	39.59	S	107	6	23.90	E
68	-2.676685	106.836874	2	40	36.07	S	106	50	12.75	E
69	-2.676658	106.854857	2	40	35.97	S	106	51	17.49	E
70	-2.67663	106.872841	2	40	35.87	S	106	52	22.23	E
71	-2.676602	106.890824	2	40	35.77	S	106	53	26.97	E
72	-2.676574	106.908807	2	40	35.67	S	106	54	31.71	E
73	-2.676546	106.92679	2	40	35.57	S	106	55	36.44	E
74	-2.676518	106.944772	2	40	35.46	S	106	56	41.18	E
75	-2.676489	106.962755	2	40	35.36	S	106	57	45.92	E
76	-2.67646	106.980737	2	40	35.26	S	106	58	50.65	E
77	-2.676401	107.016701	2	40	35.04	S	107	1	0.12	E
78	-2.676371	107.034683	2	40	34.94	S	107	2	4.86	E
79	-2.676341	107.052664	2	40	34.83	S	107	3	9.59	E
80	-2.67631	107.070646	2	40	34.72	S	107	4	14.33	E
81	-2.676249	107.106607	2	40	34.50	S	107	6	23.79	E
82	-2.658705	106.764912	2	39	31.34	S	106	45	53.68	E
83	-2.658627	106.818863	2	39	31.06	S	106	49	7.91	E
84	-2.6586	106.836847	2	39	30.96	S	106	50	12.65	E
85	-2.658573	106.85483	2	39	30.86	S	106	51	17.39	E
86	-2.658546	106.872813	2	39	30.77	S	106	52	22.13	E

CATATAN : BERLAKU MULAI 23 JUNI 2020 HINGGA 26 JUNI 2020

87	-2.658518	106.890796	2	39	30.66	S	106	53	26.87	E
88	-2.65849	106.908779	2	39	30.56	S	106	54	31.60	E
89	-2.658462	106.926762	2	39	30.46	S	106	55	36.34	E
90	-2.658434	106.944744	2	39	30.36	S	106	56	41.08	E
91	-2.658318	107.016672	2	39	29.94	S	107	1	0.02	E
92	-2.658228	107.070615	2	39	29.62	S	107	4	14.21	E
93	-2.658198	107.088596	2	39	29.51	S	107	5	18.95	E
94	-2.658167	107.106577	2	39	29.40	S	107	6	23.68	E
95	-2.640671	106.728918	2	38	26.42	S	106	43	44.10	E
96	-2.640645	106.746902	2	38	26.32	S	106	44	48.85	E
97	-2.64062	106.764886	2	38	26.23	S	106	45	53.59	E
98	-2.640594	106.78287	2	38	26.14	S	106	46	58.33	E
99	-2.640568	106.800854	2	38	26.04	S	106	48	3.07	E
100	-2.640542	106.818837	2	38	25.95	S	106	49	7.81	E
101	-2.640515	106.83682	2	38	25.85	S	106	50	12.55	E
102	-2.640434	106.890769	2	38	25.56	S	106	53	26.77	E
103	-2.640406	106.908751	2	38	25.46	S	106	54	31.50	E
104	-2.640378	106.926734	2	38	25.36	S	106	55	36.24	E
105	-2.62256	106.746877	2	37	21.22	S	106	44	48.76	E
106	-2.622509	106.782844	2	37	21.03	S	106	46	58.24	E
107	-2.622483	106.800828	2	37	20.94	S	106	48	2.98	E
108	-2.622457	106.818811	2	37	20.85	S	106	49	7.72	E
109	-2.62243	106.836794	2	37	20.75	S	106	50	12.46	E
110	-2.622403	106.854777	2	37	20.65	S	106	51	17.20	E
111	-2.622377	106.872759	2	37	20.56	S	106	52	21.93	E
112	-2.622349	106.890742	2	37	20.46	S	106	53	26.67	E
113	-2.604397	106.800802	2	36	15.83	S	106	48	2.89	E
114	-2.604371	106.818785	2	36	15.74	S	106	49	7.63	E
115	-2.604126	106.980623	2	36	14.85	S	106	58	50.24	E
116	-2.604098	106.998604	2	36	14.75	S	106	59	54.97	E
117	-2.604069	107.016584	2	36	14.65	S	107	0	59.70	E
118	-2.586043	106.980594	2	35	9.75	S	106	58	50.14	E
119	-2.586014	106.998575	2	35	9.65	S	106	59	54.87	E
120	-2.585986	107.016556	2	35	9.55	S	107	0	59.60	E
121	-2.585957	107.034536	2	35	9.45	S	107	2	4.33	E
122	-2.568015	106.944605	2	34	4.85	S	106	56	40.58	E
123	-2.567987	106.962586	2	34	4.75	S	106	57	45.31	E
124	-2.567959	106.980567	2	34	4.65	S	106	58	50.04	E
125	-2.550142	106.800726	2	33	0.51	S	106	48	2.61	E
126	-2.549958	106.926597	2	32	59.85	S	106	55	35.75	E
127	-2.549931	106.944578	2	32	59.75	S	106	56	40.48	E
128	-2.549791	107.034479	2	32	59.25	S	107	2	4.12	E
129	-2.549734	107.070438	2	32	59.04	S	107	4	13.58	E
130	-2.532106	106.764736	2	31	55.58	S	106	45	53.05	E
131	-2.532081	106.782718	2	31	55.49	S	106	46	57.78	E
132	-2.532056	106.8007	2	31	55.40	S	106	48	2.52	E
133	-2.531709	107.034451	2	31	54.15	S	107	2	4.02	E
134	-2.53168	107.05243	2	31	54.05	S	107	3	8.75	E
135	-2.531651	107.070409	2	31	53.94	S	107	4	13.47	E
136	-2.531593	107.106367	2	31	53.73	S	107	6	22.92	E
137	-2.514252	106.584882	2	30	51.31	S	106	35	5.58	E
138	-2.51423	106.602866	2	30	51.23	S	106	36	10.32	E
139	-2.514208	106.620849	2	30	51.15	S	106	37	15.06	E
140	-2.514185	106.638833	2	30	51.07	S	106	38	19.80	E
141	-2.514116	106.692782	2	30	50.82	S	106	41	34.02	E
142	-2.514093	106.710765	2	30	50.73	S	106	42	38.75	E
143	-2.51402	106.764712	2	30	50.47	S	106	45	52.96	E
144	-2.513996	106.782694	2	30	50.39	S	106	46	57.70	E
145	-2.513971	106.800676	2	30	50.30	S	106	48	2.43	E
146	-2.513946	106.818657	2	30	50.21	S	106	49	7.17	E
147	-2.513654	107.016443	2	30	49.15	S	107	0	59.19	E
148	-2.513626	107.034423	2	30	49.05	S	107	2	3.92	E
149	-2.513511	107.106338	2	30	48.64	S	107	6	22.82	E
150	-2.496827	105.883401	2	29	48.58	S	105	53	0.24	E
151	-2.496815	105.901389	2	29	48.53	S	105	54	5.00	E
152	-2.496143	106.602844	2	29	46.11	S	106	36	10.24	E
153	-2.496121	106.620827	2	29	46.04	S	106	37	14.98	E
154	-2.496099	106.63881	2	29	45.96	S	106	38	19.72	E
155	-2.496076	106.656793	2	29	45.87	S	106	39	24.45	E
156	-2.496053	106.674776	2	29	45.79	S	106	40	29.19	E
157	-2.49603	106.692759	2	29	45.71	S	106	41	33.93	E
158	-2.496007	106.710741	2	29	45.63	S	106	42	38.67	E
159	-2.495983	106.728723	2	29	45.54	S	106	43	43.40	E
160	-2.495959	106.746706	2	29	45.45	S	106	44	48.14	E
161	-2.495935	106.764687	2	29	45.37	S	106	45	52.87	E
162	-2.49591	106.782669	2	29	45.28	S	106	46	57.61	E
163	-2.495543	107.034395	2	29	43.95	S	107	2	3.82	E
164	-2.495515	107.052374	2	29	43.85	S	107	3	8.55	E
165	-2.495458	107.088331	2	29	43.65	S	107	5	17.99	E
166	-2.495429	107.106309	2	29	43.54	S	107	6	22.71	E

**CATATAN : BERLAKU MULAI 23 JUNI 2020 HINGGA 26 JUNI 2020**

167	-2.4954	107.124287
168	-2.478781	105.811436
169	-2.47877	105.829424
170	-2.478759	105.847413
171	-2.478747	105.865401
172	-2.478735	105.883389
173	-2.478121	106.548872
174	-2.478099	106.566855
175	-2.478078	106.584839
176	-2.478056	106.602822
177	-2.478034	106.620805
178	-2.478012	106.638788
179	-2.477989	106.656771
180	-2.477897	106.7287
181	-2.477873	106.746682
182	-2.477849	106.764663
183	-2.477825	106.782645
184	-2.47746	107.034367
185	-2.477432	107.052346
186	-2.477376	107.088302
187	-2.477347	107.10628
188	-2.4607	105.793437
189	-2.460689	105.811425
190	-2.460678	105.829413
191	-2.460666	105.847401
192	-2.460655	105.865389
193	-2.460643	105.883377
194	-2.460033	106.548851
195	-2.459787	106.746658
196	-2.459432	106.998382
197	-2.459405	107.016361
198	-2.459377	107.034339
199	-2.459294	107.088274
200	-2.442618	105.775438
201	-2.442607	105.793426
202	-2.442596	105.811414
203	-2.442585	105.829402
204	-2.442574	105.84739
205	-2.442563	105.865377
206	-2.442551	105.883365
207	-2.441966	106.530847
208	-2.441945	106.54883
209	-2.441748	106.710672
210	-2.441725	106.728653
211	-2.441349	106.998355
212	-2.441211	107.088246
213	-2.424545	105.739452
214	-2.424535	105.75744
215	-2.424525	105.775428
216	-2.424515	105.793416
217	-2.424504	105.811403
218	-2.424493	105.829391
219	-2.423707	106.674686
220	-2.423292	106.98035
221	-2.423266	106.998329
222	-2.423129	107.088218
223	-2.423101	107.106196
224	-2.405643	106.656682
225	-2.405621	106.674664
226	-2.405235	106.962345
227	-2.405209	106.980324
228	-2.405047	107.088191
229	-2.405019	107.106168
230	-2.387703	106.530786
231	-2.387682	106.548769
232	-2.387662	106.566751
233	-2.38762	106.602715
234	-2.387599	106.620697

2	29	43.44	S
2	28	43.61	S
2	28	43.57	S
2	28	43.53	S
2	28	43.49	S
2	28	43.45	S
2	28	41.24	S
2	28	41.16	S
2	28	41.08	S
2	28	41.00	S
2	28	40.92	S
2	28	40.84	S
2	28	40.76	S
2	28	40.43	S
2	28	40.34	S
2	28	40.26	S
2	28	40.17	S
2	28	38.86	S
2	28	38.76	S
2	28	38.55	S
2	28	38.45	S
2	27	38.52	S
2	27	38.48	S
2	27	38.44	S
2	27	38.40	S
2	27	38.36	S
2	27	38.31	S
2	27	36.12	S
2	27	35.23	S
2	27	33.96	S
2	27	33.86	S
2	27	33.76	S
2	27	33.46	S
2	26	33.42	S
2	26	33.39	S
2	26	33.35	S
2	26	33.31	S
2	26	33.27	S
2	26	33.23	S
2	26	33.18	S
2	26	31.08	S
2	26	31.00	S
2	26	30.29	S
2	26	30.21	S
2	26	28.86	S
2	26	28.36	S
2	25	28.36	S
2	25	28.33	S
2	25	28.29	S
2	25	28.25	S
2	25	28.21	S
2	25	28.17	S
2	25	25.35	S
2	25	23.85	S
2	25	23.76	S
2	25	23.26	S
2	25	23.16	S
2	24	20.31	S
2	24	20.24	S
2	24	18.85	S
2	24	18.75	S
2	24	18.17	S
2	24	18.07	S
2	23	15.73	S
2	23	15.66	S
2	23	15.58	S
2	23	15.43	S
2	23	15.36	S

107	7	27.43	E
105	48	41.17	E
105	49	45.93	E
105	50	50.69	E
105	51	55.44	E
105	53	0.20	E
106	32	55.94	E
106	34	0.68	E
106	35	5.42	E
106	36	10.16	E
106	37	14.90	E
106	38	19.64	E
106	39	24.38	E
106	43	43.32	E
106	44	48.06	E
106	45	52.79	E
106	46	57.52	E
107	2	3.72	E
107	3	8.45	E
107	5	17.89	E
107	6	22.61	E
105	47	36.37	E
105	48	41.13	E
105	49	45.89	E
105	50	50.64	E
105	51	55.40	E
105	53	0.16	E
106	32	55.86	E
106	44	47.97	E
106	59	54.18	E
107	0	58.90	E
107	2	3.62	E
107	5	17.79	E
105	46	31.58	E
105	47	36.33	E
105	48	41.09	E
105	49	45.85	E
105	50	50.60	E
105	51	55.36	E
105	53	0.11	E
106	31	51.05	E
106	32	55.79	E
106	42	38.42	E
106	43	43.15	E
106	59	54.08	E
107	5	17.69	E
105	44	22.03	E
105	45	26.78	E
105	46	31.54	E
105	47	36.30	E
105	48	41.05	E
105	49	45.81	E
106	40	28.87	E
106	58	49.26	E
106	59	53.98	E
107	5	17.58	E
107	6	22.31	E
106	39	24.06	E
106	40	28.79	E
106	57	44.44	E
106	58	49.17	E
107	5	17.49	E
107	6	22.20	E
106	31	50.83	E
106	32	55.57	E
106	34	0.30	E
106	36	9.77	E
106	37	14.51	E

**CATATAN : BERLAKU MULAI 23 JUNI 2020 HINGGA 26 JUNI 2020**

235	-2.387578	106.638679	2	23	15.28	S	106	38	19.24	E
236	-2.387556	106.65666	2	23	15.20	S	106	39	23.98	E
237	-2.387151	106.962319	2	23	13.74	S	106	57	44.35	E
238	-2.386937	107.10614	2	23	12.97	S	107	6	22.10	E
239	-2.386909	107.124117	2	23	12.87	S	107	7	26.82	E
240	-2.386881	107.142093	2	23	12.77	S	107	8	31.53	E
241	-2.386853	107.160069	2	23	12.67	S	107	9	36.25	E
242	-2.386825	107.178046	2	23	12.57	S	107	10	40.97	E
243	-2.369731	106.42287	2	22	11.03	S	106	25	22.33	E
244	-2.369712	106.440853	2	22	10.96	S	106	26	27.07	E
245	-2.369615	106.530766	2	22	10.61	S	106	31	50.76	E
246	-2.369574	106.566731	2	22	10.47	S	106	34	0.23	E
247	-2.369533	106.602694	2	22	10.32	S	106	36	9.70	E
248	-2.369068	106.962294	2	22	8.64	S	106	57	44.26	E
249	-2.368828	107.124089	2	22	7.78	S	107	7	26.72	E
250	-2.3688	107.142065	2	22	7.68	S	107	8	31.43	E
251	-2.368772	107.160041	2	22	7.58	S	107	9	36.15	E
252	-2.368743	107.178017	2	22	7.47	S	107	10	40.86	E
253	-2.35166	106.404868	2	21	5.98	S	106	24	17.52	E
254	-2.351642	106.422851	2	21	5.91	S	106	25	22.26	E
255	-2.351623	106.440834	2	21	5.84	S	106	26	27.00	E
256	-2.351604	106.458817	2	21	5.77	S	106	27	31.74	E
257	-2.351585	106.4768	2	21	5.71	S	106	28	36.48	E
258	-2.351566	106.494782	2	21	5.64	S	106	29	41.22	E
259	-2.351547	106.512764	2	21	5.57	S	106	30	45.95	E
260	-2.351527	106.530747	2	21	5.50	S	106	31	50.69	E
261	-2.351507	106.548729	2	21	5.43	S	106	32	55.42	E
262	-2.351487	106.56671	2	21	5.35	S	106	34	0.16	E
263	-2.351009	106.944291	2	21	3.63	S	106	56	39.45	E
264	-2.350984	106.962269	2	21	3.54	S	106	57	44.17	E
265	-2.350933	106.998224	2	21	3.36	S	106	59	53.61	E
266	-2.350907	107.016201	2	21	3.27	S	107	0	58.32	E
267	-2.333589	106.386867	2	20	0.92	S	106	23	12.72	E
268	-2.333571	106.40485	2	20	0.86	S	106	24	17.46	E
269	-2.333516	106.458798	2	20	0.66	S	106	27	31.67	E
270	-2.333497	106.476781	2	20	0.59	S	106	28	36.41	E
271	-2.333478	106.494763	2	20	0.52	S	106	29	41.15	E
272	-2.333459	106.512745	2	20	0.45	S	106	30	45.88	E
273	-2.333439	106.530727	2	20	0.38	S	106	31	50.62	E
274	-2.333419	106.548709	2	20	0.31	S	106	32	55.35	E
275	-2.333399	106.56669	2	20	0.24	S	106	34	0.08	E
276	-2.332975	106.908309	2	19	58.71	S	106	54	29.91	E
277	-2.33295	106.926288	2	19	58.62	S	106	55	34.64	E
278	-2.332925	106.944266	2	19	58.53	S	106	56	39.36	E
279	-2.332824	107.016176	2	19	58.17	S	107	0	58.23	E
280	-2.332798	107.034153	2	19	58.07	S	107	2	2.95	E
281	-2.315482	106.404832	2	18	55.74	S	106	24	17.40	E
282	-2.315409	106.476762	2	18	55.47	S	106	28	36.34	E
283	-2.31539	106.494744	2	18	55.40	S	106	29	41.08	E
284	-2.315351	106.530707	2	18	55.26	S	106	31	50.55	E
285	-2.314915	106.890307	2	18	53.69	S	106	53	25.11	E
286	-2.314891	106.908285	2	18	53.61	S	106	54	29.83	E
287	-2.314866	106.926263	2	18	53.52	S	106	55	34.55	E
288	-2.314817	106.962218	2	18	53.34	S	106	57	43.98	E
289	-2.314792	106.980196	2	18	53.25	S	106	58	48.71	E
290	-2.314741	107.01615	2	18	53.07	S	107	0	58.14	E
291	-2.314715	107.034127	2	18	52.97	S	107	2	2.86	E
292	-2.297302	106.494725	2	17	50.29	S	106	29	41.01	E
293	-2.297283	106.512707	2	17	50.22	S	106	30	45.75	E
294	-2.297264	106.530688	2	17	50.15	S	106	31	50.48	E
295	-2.296854	106.872305	2	17	48.67	S	106	52	20.30	E
296	-2.296831	106.890283	2	17	48.59	S	106	53	25.02	E
297	-2.296807	106.908261	2	17	48.51	S	106	54	29.74	E
298	-2.296733	106.962194	2	17	48.24	S	106	57	43.90	E
299	-2.296708	106.980171	2	17	48.15	S	106	58	48.62	E
300	-2.296658	107.016124	2	17	47.97	S	107	0	58.05	E
301	-2.296632	107.034101	2	17	47.88	S	107	2	2.76	E
302	-2.296606	107.052077	2	17	47.78	S	107	3	7.48	E

303	-2.278722	106.908237	2	16	43.40	S	106	54	29.65	E
304	-2.278625	106.980146	2	16	43.05	S	106	58	48.53	E
305	-2.2786	106.998123	2	16	42.96	S	106	59	53.24	E
306	-2.278523	107.052052	2	16	42.68	S	107	3	7.39	E
307	-2.278498	107.070028	2	16	42.59	S	107	4	12.10	E
308	-2.260638	106.908213	2	15	38.30	S	106	54	29.57	E
309	-2.260491	107.016074	2	15	37.77	S	107	0	57.87	E
310	-2.260466	107.03405	2	15	37.68	S	107	2	2.58	E
311	-2.260441	107.052026	2	15	37.59	S	107	3	7.29	E
312	-2.242408	107.016049	2	14	32.67	S	107	0	57.78	E
313	-2.242383	107.034025	2	14	32.58	S	107	2	2.49	E
314	-2.242358	107.052001	2	14	32.49	S	107	3	7.20	E
315	-2.206315	106.962073	2	12	22.73	S	106	57	43.46	E
316	-2.206291	106.980049	2	12	22.65	S	106	58	48.18	E
317	-2.189019	106.224894	2	11	20.47	S	106	13	29.62	E
318	-2.189004	106.242876	2	11	20.41	S	106	14	34.35	E
319	-2.188894	106.368749	2	11	20.02	S	106	22	7.50	E
320	-2.188877	106.38673	2	11	19.96	S	106	23	12.23	E
321	-2.188207	106.980025	2	11	17.55	S	106	58	48.09	E
322	-2.188183	106.998	2	11	17.46	S	106	59	52.80	E
323	-2.170943	106.206897	2	10	15.39	S	106	12	24.83	E
324	-2.170929	106.224879	2	10	15.34	S	106	13	29.56	E
325	-2.170853	106.314788	2	10	15.07	S	106	18	53.24	E
326	-2.170837	106.33277	2	10	15.01	S	106	19	57.97	E
327	-2.170821	106.350751	2	10	14.96	S	106	21	2.70	E
328	-2.170805	106.368732	2	10	14.90	S	106	22	7.44	E
329	-2.170535	106.638433	2	10	13.93	S	106	38	18.36	E
330	-2.170515	106.656412	2	10	13.85	S	106	39	23.08	E
331	-2.170495	106.674391	2	10	13.78	S	106	40	27.81	E
332	-2.170284	106.854168	2	10	13.02	S	106	51	15.00	E
333	-2.170262	106.872145	2	10	12.94	S	106	52	19.72	E
334	-2.170147	106.962026	2	10	12.53	S	106	57	43.29	E
335	-2.170124	106.980001	2	10	12.45	S	106	58	48.00	E
336	-2.1701	106.997977	2	10	12.36	S	106	59	52.72	E
337	-2.152763	106.314773	2	9	9.95	S	106	18	53.18	E
338	-2.152732	106.350735	2	9	9.84	S	106	21	2.65	E
339	-2.152448	106.638414	2	9	8.81	S	106	38	18.29	E
340	-2.152428	106.656393	2	9	8.74	S	106	39	23.01	E
341	-2.152409	106.674371	2	9	8.67	S	106	40	27.74	E
342	-2.152389	106.692349	2	9	8.60	S	106	41	32.46	E
343	-2.152369	106.710327	2	9	8.53	S	106	42	37.18	E
344	-2.152221	106.836169	2	9	8.00	S	106	50	10.21	E
345	-2.152199	106.854146	2	9	7.92	S	106	51	14.93	E
346	-2.152177	106.872123	2	9	7.84	S	106	52	19.64	E
347	-2.15204	106.979978	2	9	7.34	S	106	58	47.92	E
348	-2.134642	106.350719	2	8	4.71	S	106	21	2.59	E
349	-2.13461	106.386681	2	8	4.60	S	106	23	12.05	E
350	-2.134594	106.404661	2	8	4.54	S	106	24	16.78	E
351	-2.134577	106.422642	2	8	4.48	S	106	25	21.51	E
352	-2.13456	106.440622	2	8	4.42	S	106	26	26.24	E
353	-2.134543	106.458602	2	8	4.35	S	106	27	30.97	E
354	-2.134418	106.584459	2	8	3.90	S	106	35	4.05	E
355	-2.134399	106.602437	2	8	3.84	S	106	36	8.77	E
356	-2.134136	106.836148	2	8	2.89	S	106	50	10.13	E
357	-2.116505	106.404645	2	6	59.42	S	106	24	16.72	E
358	-2.116488	106.422625	2	6	59.36	S	106	25	21.45	E
359	-2.116472	106.440605	2	6	59.30	S	106	26	26.18	E
360	-2.116312	106.602419	2	6	58.72	S	106	36	8.71	E
361	-2.116293	106.620397	2	6	58.65	S	106	37	13.43	E
362	-2.098416	106.404629	2	5	54.30	S	106	24	16.66	E
363	-2.098399	106.422609	2	5	54.24	S	106	25	21.39	E
364	-2.098225	106.6024	2	5	53.61	S	106	36	8.64	E
365	-2.098206	106.620379	2	5	53.54	S	106	37	13.36	E
366	-2.080156	106.584404	2	4	48.56	S	106	35	3.85	E