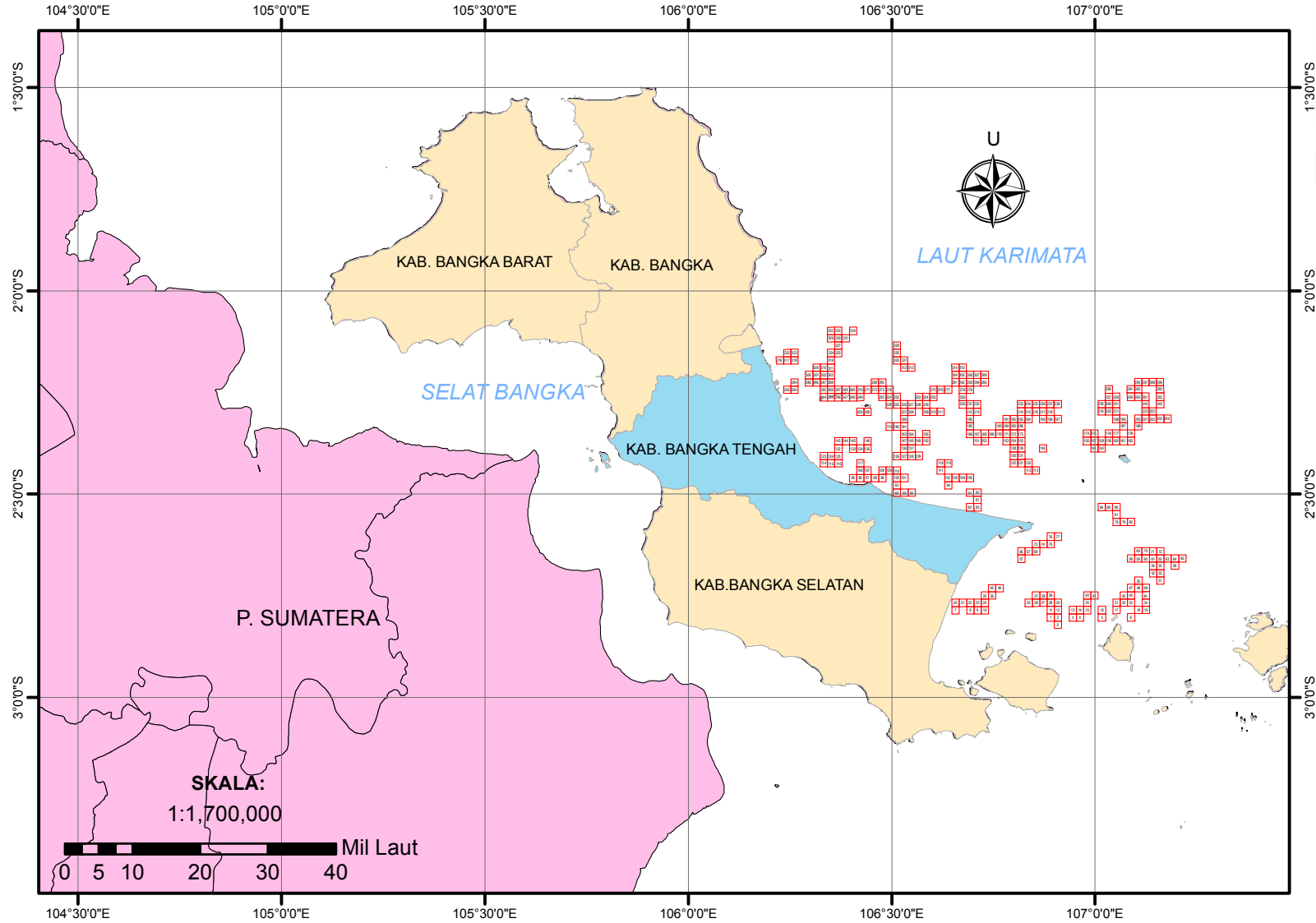
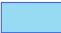
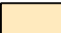




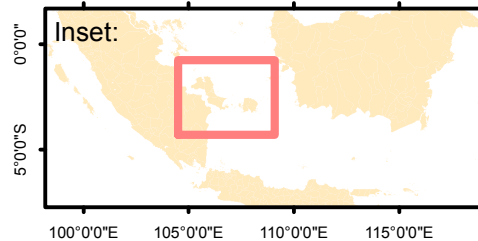


# SISTEM INFORMASI DAERAH POTENSIAL PENANGKAPAN IKAN PERAIRAN KABUPATEN BANGKA TENGAH TANGGAL 26 JUNI 2020



### Legenda:

-  Kab. Bangka Tengah
-  Prov. Bangka Belitung
-  P. Sumatera
-  Daerah Potensial Penangkapan Ikan



Dibuat oleh:  
**Dinas Perikanan  
Kabupaten Bangka Tengah**

- Sumber Data:
1. Data Ocean Color
  2. Data NCEP
  3. Peta RBI Dijital

**CATATAN : BERLAKU MULAI 26 JUNI 2020 HINGGA 30 JUNI 2020**

NO	Lat	Lon	Latitude				Longitude			
	Dec	Dec	DD	MM	SS	Position	DD	MM	SS	Position
0	-2.821247	106.909037	2	49	16.49	S	106	54	32.53	E
1	-2.803192	106.891023	2	48	11.49	S	106	53	27.68	E
2	-2.803163	106.909008	2	48	11.39	S	106	54	32.43	E
3	-2.803104	106.944977	2	48	11.17	S	106	56	41.92	E
4	-2.803073	106.962961	2	48	11.06	S	106	57	46.66	E
5	-2.802981	107.016913	2	48	10.73	S	107	1	0.89	E
6	-2.802854	107.088846	2	48	10.27	S	107	5	19.85	E
7	-2.785462	106.657177	2	47	7.66	S	106	39	25.84	E
8	-2.785411	106.693151	2	47	7.48	S	106	41	35.34	E
9	-2.785384	106.711137	2	47	7.38	S	106	42	40.09	E
10	-2.785358	106.729124	2	47	7.29	S	106	43	44.85	E
11	-2.785108	106.890994	2	47	6.39	S	106	53	27.58	E
12	-2.785079	106.908978	2	47	6.28	S	106	54	32.32	E
13	-2.78502	106.944947	2	47	6.07	S	106	56	41.81	E
14	-2.78499	106.962931	2	47	5.96	S	106	57	46.55	E
15	-2.78496	106.980915	2	47	5.86	S	106	58	51.29	E
16	-2.784898	107.016882	2	47	5.63	S	107	1	0.78	E
17	-2.784836	107.052849	2	47	5.41	S	107	3	10.26	E
18	-2.78474	107.106797	2	47	5.06	S	107	6	24.47	E
19	-2.784708	107.124779	2	47	4.95	S	107	7	29.20	E
20	-2.767375	106.657152	2	46	2.55	S	106	39	25.75	E
21	-2.76735	106.675138	2	46	2.46	S	106	40	30.50	E
22	-2.767324	106.693125	2	46	2.37	S	106	41	35.25	E
23	-2.767298	106.711111	2	46	2.27	S	106	42	40.00	E
24	-2.767272	106.729097	2	46	2.18	S	106	43	44.75	E
25	-2.767109	106.837011	2	46	1.59	S	106	50	13.24	E
26	-2.767081	106.854996	2	46	1.49	S	106	51	17.99	E
27	-2.767053	106.87298	2	46	1.39	S	106	52	22.73	E
28	-2.767024	106.890965	2	46	1.29	S	106	53	27.47	E
29	-2.766995	106.908949	2	46	1.18	S	106	54	32.22	E
30	-2.766876	106.980885	2	46	0.75	S	106	58	51.19	E
31	-2.766753	107.052817	2	46	0.31	S	107	3	10.14	E
32	-2.766722	107.0708	2	46	0.20	S	107	4	14.88	E
33	-2.76669	107.088782	2	46	0.08	S	107	5	19.62	E
34	-2.766626	107.124746	2	45	59.85	S	107	7	29.09	E
35	-2.749186	106.729071	2	44	57.07	S	106	43	44.66	E
36	-2.74916	106.747057	2	44	56.98	S	106	44	49.41	E
37	-2.748996	106.854968	2	44	56.39	S	106	51	17.88	E
38	-2.748968	106.872952	2	44	56.28	S	106	52	22.63	E
39	-2.74894	106.890936	2	44	56.18	S	106	53	27.37	E
40	-2.748793	106.980855	2	44	55.65	S	106	58	51.08	E
41	-2.748763	106.998838	2	44	55.55	S	106	59	55.82	E
42	-2.74864	107.070769	2	44	55.10	S	107	4	14.77	E
43	-2.748608	107.088751	2	44	54.99	S	107	5	19.50	E
44	-2.748544	107.124714	2	44	54.76	S	107	7	28.97	E
45	-2.731074	106.747031	2	43	51.87	S	106	44	49.31	E
46	-2.731048	106.765016	2	43	51.77	S	106	45	54.06	E
47	-2.730526	107.088719	2	43	49.89	S	107	5	19.39	E
48	-2.730494	107.106701	2	43	49.78	S	107	6	24.12	E
49	-2.730463	107.124682	2	43	49.67	S	107	7	28.86	E
50	-2.712413	107.10667	2	42	44.69	S	107	6	24.01	E
51	-2.712317	107.160613	2	42	44.34	S	107	9	38.21	E
52	-2.694268	107.1426	2	41	39.36	S	107	8	33.36	E
53	-2.694236	107.160581	2	41	39.25	S	107	9	38.09	E
54	-2.676186	107.142569	2	40	34.27	S	107	8	33.25	E
55	-2.676154	107.160549	2	40	34.15	S	107	9	37.98	E
56	-2.67609	107.196509	2	40	33.92	S	107	11	47.43	E
57	-2.658627	106.818863	2	39	31.06	S	106	49	7.91	E
58	-2.658198	107.088596	2	39	29.51	S	107	5	18.95	E
59	-2.658167	107.106577	2	39	29.40	S	107	6	23.68	E
60	-2.658136	107.124557	2	39	29.29	S	107	7	28.41	E
61	-2.658105	107.142537	2	39	29.18	S	107	8	33.13	E
62	-2.658073	107.160517	2	39	29.06	S	107	9	37.86	E
63	-2.658041	107.178497	2	39	28.95	S	107	10	42.59	E
64	-2.658009	107.196476	2	39	28.83	S	107	11	47.31	E
65	-2.657977	107.214456	2	39	28.72	S	107	12	52.04	E
66	-2.640542	106.818837	2	38	25.95	S	106	49	7.81	E
67	-2.640515	106.83682	2	38	25.85	S	106	50	12.55	E
68	-2.640488	106.854803	2	38	25.76	S	106	51	17.29	E
69	-2.640085	107.106546	2	38	24.31	S	107	6	23.57	E
70	-2.640054	107.124526	2	38	24.19	S	107	7	28.29	E
71	-2.640023	107.142506	2	38	24.08	S	107	8	33.02	E
72	-2.639992	107.160486	2	38	23.97	S	107	9	37.75	E
73	-2.622403	106.854777	2	37	20.65	S	106	51	17.20	E
74	-2.622377	106.872759	2	37	20.56	S	106	52	21.93	E
75	-2.622349	106.890742	2	37	20.46	S	106	53	26.67	E
76	-2.604265	106.890715	2	36	15.35	S	106	53	26.57	E
77	-2.604238	106.908697	2	36	15.26	S	106	54	31.31	E
78	-2.567845	107.052487	2	34	4.24	S	107	3	8.95	E
79	-2.567816	107.070467	2	34	4.14	S	107	4	13.68	E
80	-2.567787	107.088447	2	34	4.03	S	107	5	18.41	E
81	-2.549763	107.052459	2	32	59.15	S	107	3	8.85	E
82	-2.532203	106.692805	2	31	55.93	S	106	41	34.10	E
83	-2.532179	106.710788	2	31	55.84	S	106	42	38.84	E
84	-2.531737	107.016471	2	31	54.25	S	107	0	59.30	E
85	-2.531709	107.034451	2	31	54.15	S	107	2	4.02	E
86	-2.53168	107.05243	2	31	54.05	S	107	3	8.75	E

**CATATAN : BERLAKU MULAI 26 JUNI 2020 HINGGA 30 JUNI 2020**

87	-2.514093	106.710765	2	30	50.73	S	106	42	38.75	E
88	-2.49625	106.512925	2	29	46.50	S	106	30	46.53	E
89	-2.496229	106.530909	2	29	46.42	S	106	31	51.27	E
90	-2.496208	106.548893	2	29	46.35	S	106	32	56.01	E
91	-2.49603	106.692759	2	29	45.71	S	106	41	33.93	E
92	-2.496007	106.710741	2	29	45.63	S	106	42	38.67	E
93	-2.478162	106.512904	2	28	41.38	S	106	30	46.45	E
94	-2.478012	106.638788	2	28	40.84	S	106	38	19.64	E
95	-2.460193	106.404979	2	27	36.69	S	106	24	17.92	E
96	-2.460174	106.422964	2	27	36.63	S	106	25	22.67	E
97	-2.460155	106.440948	2	27	36.56	S	106	26	27.41	E
98	-2.460135	106.458932	2	27	36.49	S	106	27	32.16	E
99	-2.460115	106.476916	2	27	36.41	S	106	28	36.90	E
100	-2.460074	106.512884	2	27	36.27	S	106	30	46.38	E
101	-2.460054	106.530868	2	27	36.19	S	106	31	51.12	E
102	-2.459925	106.638766	2	27	35.73	S	106	38	19.56	E
103	-2.459903	106.656748	2	27	35.65	S	106	39	24.29	E
104	-2.45988	106.674731	2	27	35.57	S	106	40	29.03	E
105	-2.459857	106.692713	2	27	35.49	S	106	41	33.77	E
106	-2.442085	106.422945	2	26	31.51	S	106	25	22.60	E
107	-2.442066	106.440929	2	26	31.44	S	106	26	27.34	E
108	-2.442027	106.476897	2	26	31.30	S	106	28	36.83	E
109	-2.442007	106.49488	2	26	31.23	S	106	29	41.57	E
110	-2.441987	106.512864	2	26	31.15	S	106	30	46.31	E
111	-2.44186	106.620761	2	26	30.70	S	106	37	14.74	E
112	-2.441581	106.836539	2	26	29.69	S	106	50	11.54	E
113	-2.441556	106.854519	2	26	29.60	S	106	51	16.27	E
114	-2.424089	106.333005	2	25	26.72	S	106	19	58.82	E
115	-2.424071	106.350989	2	25	26.66	S	106	21	3.56	E
116	-2.424053	106.368974	2	25	26.59	S	106	22	8.31	E
117	-2.423997	106.422926	2	25	26.39	S	106	25	22.53	E
118	-2.423773	106.62074	2	25	25.58	S	106	37	14.66	E
119	-2.423751	106.638722	2	25	25.50	S	106	38	19.40	E
120	-2.423545	106.800554	2	25	24.76	S	106	48	1.99	E
121	-2.42352	106.818534	2	25	24.67	S	106	49	6.72	E
122	-2.423496	106.836515	2	25	24.59	S	106	50	11.45	E
123	-2.405999	106.332987	2	24	21.60	S	106	19	58.75	E
124	-2.405981	106.350971	2	24	21.53	S	106	21	3.50	E
125	-2.405963	106.368955	2	24	21.47	S	106	22	8.24	E
126	-2.405811	106.512824	2	24	20.92	S	106	30	46.17	E
127	-2.40579	106.530806	2	24	20.84	S	106	31	50.90	E
128	-2.40577	106.548789	2	24	20.77	S	106	32	55.64	E
129	-2.405749	106.566772	2	24	20.70	S	106	34	0.38	E
130	-2.405459	106.80053	2	24	19.65	S	106	48	1.91	E
131	-2.405435	106.81851	2	24	19.57	S	106	49	6.64	E
132	-2.387874	106.368937	2	23	16.35	S	106	22	8.17	E
133	-2.387838	106.404905	2	23	16.22	S	106	24	17.66	E
134	-2.387819	106.422888	2	23	16.15	S	106	25	22.40	E
135	-2.3878	106.440872	2	23	16.08	S	106	26	27.14	E
136	-2.387703	106.530786	2	23	15.73	S	106	31	50.83	E
137	-2.387682	106.548769	2	23	15.66	S	106	32	55.57	E
138	-2.387374	106.800506	2	23	14.55	S	106	48	1.82	E
139	-2.38735	106.818486	2	23	14.46	S	106	49	6.55	E
140	-2.387277	106.872425	2	23	14.20	S	106	52	20.73	E
141	-2.387099	106.998276	2	23	13.56	S	106	59	53.79	E
142	-2.387073	107.016254	2	23	13.46	S	107	0	58.51	E
143	-2.369785	106.36892	2	22	11.23	S	106	22	8.11	E
144	-2.369767	106.386903	2	22	11.16	S	106	23	12.85	E
145	-2.369749	106.404887	2	22	11.10	S	106	24	17.59	E
146	-2.369712	106.440853	2	22	10.96	S	106	26	27.07	E
147	-2.369615	106.530766	2	22	10.61	S	106	31	50.76	E
148	-2.369595	106.548749	2	22	10.54	S	106	32	55.50	E
149	-2.369574	106.566731	2	22	10.47	S	106	34	0.23	E
150	-2.369554	106.584713	2	22	10.39	S	106	35	4.97	E
151	-2.369403	106.710582	2	22	9.85	S	106	42	38.10	E
152	-2.369381	106.728562	2	22	9.77	S	106	43	42.82	E
153	-2.369312	106.782503	2	22	9.52	S	106	46	57.01	E
154	-2.369289	106.800483	2	22	9.44	S	106	48	1.74	E
155	-2.369265	106.818463	2	22	9.35	S	106	49	6.47	E
156	-2.369042	106.980272	2	22	8.55	S	106	58	48.98	E
157	-2.369016	106.99825	2	22	8.46	S	106	59	53.70	E
158	-2.36899	107.016227	2	22	8.36	S	107	0	58.42	E
159	-2.368963	107.034205	2	22	8.27	S	107	2	3.14	E
160	-2.368937	107.052182	2	22	8.17	S	107	3	7.86	E
161	-2.36891	107.070159	2	22	8.08	S	107	4	12.57	E
162	-2.368883	107.088136	2	22	7.98	S	107	5	17.29	E
163	-2.351527	106.530747	2	21	5.50	S	106	31	50.69	E
164	-2.351507	106.548729	2	21	5.43	S	106	32	55.42	E
165	-2.351466	106.584692	2	21	5.28	S	106	35	4.89	E
166	-2.351339	106.692579	2	21	4.82	S	106	41	33.28	E

**CATATAN : BERLAKU MULAI 26 JUNI 2020 HINGGA 30 JUNI 2020**

167	-2.351317	106.710559	2	21	4.74	S	106	42	38.01	E
168	-2.351295	106.72854	2	21	4.66	S	106	43	42.74	E
169	-2.351272	106.74652	2	21	4.58	S	106	44	47.47	E
170	-2.35125	106.7645	2	21	4.50	S	106	45	52.20	E
171	-2.351227	106.78248	2	21	4.42	S	106	46	56.93	E
172	-2.351203	106.80046	2	21	4.33	S	106	48	1.66	E
173	-2.35118	106.818439	2	21	4.25	S	106	49	6.38	E
174	-2.350958	106.980246	2	21	3.45	S	106	58	48.89	E
175	-2.350933	106.998224	2	21	3.36	S	106	59	53.61	E
176	-2.350881	107.034179	2	21	3.17	S	107	2	3.04	E
177	-2.350854	107.052156	2	21	3.07	S	107	3	7.76	E
178	-2.3508	107.088109	2	21	2.88	S	107	5	17.19	E
179	-2.333478	106.494763	2	20	0.52	S	106	29	41.15	E
180	-2.333459	106.512745	2	20	0.45	S	106	30	45.88	E
181	-2.333439	106.530727	2	20	0.38	S	106	31	50.62	E
182	-2.333253	106.692557	2	19	59.71	S	106	41	33.21	E
183	-2.333164	106.764477	2	19	59.39	S	106	45	52.12	E
184	-2.333141	106.782457	2	19	59.31	S	106	46	56.85	E
185	-2.333118	106.800437	2	19	59.22	S	106	48	1.57	E
186	-2.333095	106.818416	2	19	59.14	S	106	49	6.30	E
187	-2.332745	107.070106	2	19	57.88	S	107	4	12.38	E
188	-2.332691	107.106058	2	19	57.69	S	107	6	21.81	E
189	-2.315351	106.530707	2	18	55.26	S	106	31	50.55	E
190	-2.315166	106.692536	2	18	54.60	S	106	41	33.13	E
191	-2.315056	106.782434	2	18	54.20	S	106	46	56.76	E
192	-2.315033	106.800414	2	18	54.12	S	106	48	1.49	E
193	-2.31501	106.818393	2	18	54.04	S	106	49	6.21	E
194	-2.314986	106.836372	2	18	53.95	S	106	50	10.94	E
195	-2.314939	106.872329	2	18	53.78	S	106	52	20.38	E
196	-2.314915	106.890307	2	18	53.69	S	106	53	25.11	E
197	-2.314891	106.908285	2	18	53.61	S	106	54	29.83	E
198	-2.314689	107.052103	2	18	52.88	S	107	3	7.57	E
199	-2.314662	107.07008	2	18	52.78	S	107	4	12.29	E
200	-2.314609	107.106032	2	18	52.59	S	107	6	21.72	E
201	-2.314582	107.124007	2	18	52.50	S	107	7	26.43	E
202	-2.314555	107.141983	2	18	52.40	S	107	8	31.14	E
203	-2.314528	107.159958	2	18	52.30	S	107	9	35.85	E
204	-2.3145	107.177933	2	18	52.20	S	107	10	40.56	E
205	-2.297376	106.422797	2	17	50.55	S	106	25	22.07	E
206	-2.297358	106.440779	2	17	50.49	S	106	26	26.80	E
207	-2.297264	106.530688	2	17	50.15	S	106	31	50.48	E
208	-2.297244	106.548669	2	17	50.08	S	106	32	55.21	E
209	-2.297204	106.584632	2	17	49.93	S	106	35	4.68	E
210	-2.297184	106.602612	2	17	49.86	S	106	36	9.40	E
211	-2.297164	106.620593	2	17	49.79	S	106	37	14.13	E
212	-2.29708	106.692514	2	17	49.49	S	106	41	33.05	E
213	-2.297058	106.710494	2	17	49.41	S	106	42	37.78	E
214	-2.296924	106.81837	2	17	48.93	S	106	49	6.13	E
215	-2.296901	106.836348	2	17	48.84	S	106	50	10.85	E
216	-2.296878	106.854327	2	17	48.76	S	106	51	15.58	E
217	-2.296854	106.872305	2	17	48.67	S	106	52	20.30	E
218	-2.296831	106.890283	2	17	48.59	S	106	53	25.02	E
219	-2.296658	107.016124	2	17	47.97	S	107	0	58.05	E
220	-2.296632	107.034101	2	17	47.88	S	107	2	2.76	E
221	-2.296606	107.052077	2	17	47.78	S	107	3	7.48	E
222	-2.2965	107.123981	2	17	47.40	S	107	7	26.33	E
223	-2.296473	107.141956	2	17	47.30	S	107	8	31.04	E
224	-2.279214	106.494706	2	16	45.17	S	106	29	40.94	E
225	-2.279195	106.512688	2	16	45.10	S	106	30	45.68	E
226	-2.279176	106.530669	2	16	45.03	S	106	31	50.41	E
227	-2.279156	106.54865	2	16	44.96	S	106	32	55.14	E
228	-2.279137	106.566631	2	16	44.89	S	106	33	59.87	E
229	-2.279117	106.584612	2	16	44.82	S	106	35	4.60	E
230	-2.279015	106.674513	2	16	44.45	S	106	40	28.25	E
231	-2.278994	106.692493	2	16	44.38	S	106	41	32.97	E
232	-2.278972	106.710473	2	16	44.30	S	106	42	37.70	E
233	-2.278839	106.818347	2	16	43.82	S	106	49	6.05	E
234	-2.278816	106.836325	2	16	43.74	S	106	50	10.77	E

**CATATAN : BERLAKU MULAI 26 JUNI 2020 HINGGA 30 JUNI 2020**

235	-2.278793	106.854304	2	16	43.65	S	106	51	15.49	E
236	-2.27877	106.872282	2	16	43.57	S	106	52	20.22	E
237	-2.278746	106.890259	2	16	43.49	S	106	53	24.93	E
238	-2.278722	106.908237	2	16	43.40	S	106	54	29.65	E
239	-2.278575	107.016099	2	16	42.87	S	107	0	57.96	E
240	-2.278549	107.034075	2	16	42.78	S	107	2	2.67	E
241	-2.278523	107.052052	2	16	42.68	S	107	3	7.39	E
242	-2.278419	107.123954	2	16	42.31	S	107	7	26.23	E
243	-2.278365	107.159904	2	16	42.11	S	107	9	35.65	E
244	-2.261284	106.332851	2	15	40.62	S	106	19	58.26	E
245	-2.261267	106.350833	2	15	40.56	S	106	21	3.00	E
246	-2.26125	106.368815	2	15	40.50	S	106	22	7.73	E
247	-2.261233	106.386798	2	15	40.44	S	106	23	12.47	E
248	-2.261216	106.40478	2	15	40.38	S	106	24	17.21	E
249	-2.261198	106.422762	2	15	40.31	S	106	25	21.94	E
250	-2.261144	106.476706	2	15	40.12	S	106	28	36.14	E
251	-2.261126	106.494688	2	15	40.05	S	106	29	40.88	E
252	-2.261107	106.512669	2	15	39.99	S	106	30	45.61	E
253	-2.261049	106.566611	2	15	39.78	S	106	33	59.80	E
254	-2.26103	106.584592	2	15	39.71	S	106	35	4.53	E
255	-2.26101	106.602572	2	15	39.64	S	106	36	9.26	E
256	-2.260928	106.674492	2	15	39.34	S	106	40	28.17	E
257	-2.260466	107.03405	2	15	37.68	S	107	2	2.58	E
258	-2.260441	107.052026	2	15	37.59	S	107	3	7.29	E
259	-2.260389	107.087977	2	15	37.40	S	107	5	16.72	E
260	-2.260363	107.105953	2	15	37.31	S	107	6	21.43	E
261	-2.260337	107.123928	2	15	37.21	S	107	7	26.14	E
262	-2.260283	107.159877	2	15	37.02	S	107	9	35.56	E
263	-2.243274	106.242921	2	14	35.79	S	106	14	34.52	E
264	-2.243259	106.260904	2	14	35.73	S	106	15	39.25	E
265	-2.243195	106.332834	2	14	35.50	S	106	19	58.20	E
266	-2.243178	106.350816	2	14	35.44	S	106	21	2.94	E
267	-2.243161	106.368799	2	14	35.38	S	106	22	7.68	E
268	-2.243144	106.386781	2	14	35.32	S	106	23	12.41	E
269	-2.243127	106.404762	2	14	35.26	S	106	24	17.14	E
270	-2.24311	106.422744	2	14	35.20	S	106	25	21.88	E
271	-2.243092	106.440726	2	14	35.13	S	106	26	26.61	E
272	-2.243074	106.458707	2	14	35.07	S	106	27	31.35	E
273	-2.243056	106.476688	2	14	35.00	S	106	28	36.08	E
274	-2.243037	106.494669	2	14	34.93	S	106	29	40.81	E
275	-2.242923	106.602553	2	14	34.52	S	106	36	9.19	E
276	-2.242903	106.620533	2	14	34.45	S	106	37	13.92	E
277	-2.242883	106.638513	2	14	34.38	S	106	38	18.65	E
278	-2.242842	106.674472	2	14	34.23	S	106	40	28.10	E
279	-2.242821	106.692451	2	14	34.16	S	106	41	32.82	E
280	-2.242383	107.034025	2	14	32.58	S	107	2	2.49	E
281	-2.242307	107.087952	2	14	32.31	S	107	5	16.63	E
282	-2.242281	107.105927	2	14	32.21	S	107	6	21.34	E
283	-2.242202	107.15985	2	14	31.93	S	107	9	35.46	E
284	-2.225169	106.260889	2	13	30.61	S	106	15	39.20	E
285	-2.225137	106.296854	2	13	30.49	S	106	17	48.67	E
286	-2.225121	106.314836	2	13	30.44	S	106	18	53.41	E
287	-2.225105	106.332818	2	13	30.38	S	106	19	58.14	E
288	-2.225089	106.3508	2	13	30.32	S	106	21	2.88	E
289	-2.224985	106.458689	2	13	29.95	S	106	27	31.28	E
290	-2.224967	106.47667	2	13	29.88	S	106	28	36.01	E
291	-2.224775	106.656472	2	13	29.19	S	106	39	23.30	E
292	-2.224755	106.674451	2	13	29.12	S	106	40	28.02	E
293	-2.224734	106.69243	2	13	29.04	S	106	41	32.75	E
294	-2.224714	106.710409	2	13	28.97	S	106	42	37.47	E
295	-2.224692	106.728388	2	13	28.89	S	106	43	42.20	E
296	-2.224199	107.105901	2	13	27.12	S	107	6	21.24	E
297	-2.224173	107.123875	2	13	27.02	S	107	7	25.95	E
298	-2.224147	107.14185	2	13	26.93	S	107	8	30.66	E
299	-2.224121	107.159824	2	13	26.84	S	107	9	35.37	E
300	-2.207048	106.296838	2	12	25.37	S	106	17	48.62	E
301	-2.207032	106.31482	2	12	25.32	S	106	18	53.35	E
302	-2.207016	106.332802	2	12	25.26	S	106	19	58.09	E

**CATATAN : BERLAKU MULAI 26 JUNI 2020 HINGGA 30 JUNI 2020**

303	-2.206999	106.350784	2	12	25.20	S	106	21	2.82	E
304	-2.206689	106.656452	2	12	24.08	S	106	39	23.23	E
305	-2.206668	106.674431	2	12	24.00	S	106	40	27.95	E
306	-2.206648	106.69241	2	12	23.93	S	106	41	32.68	E
307	-2.206627	106.710389	2	12	23.86	S	106	42	37.40	E
308	-2.206606	106.728367	2	12	23.78	S	106	43	42.12	E
309	-2.188942	106.314804	2	11	20.19	S	106	18	53.29	E
310	-2.188926	106.332786	2	11	20.13	S	106	19	58.03	E
311	-2.18891	106.350767	2	11	20.08	S	106	21	2.76	E
312	-2.188736	106.530575	2	11	19.45	S	106	31	50.07	E
313	-2.188718	106.548555	2	11	19.38	S	106	32	54.80	E
314	-2.188602	106.656432	2	11	18.97	S	106	39	23.16	E
315	-2.188582	106.674411	2	11	18.90	S	106	40	27.88	E
316	-2.170929	106.224879	2	10	15.34	S	106	13	29.56	E
317	-2.170914	106.242861	2	10	15.29	S	106	14	34.30	E
318	-2.170899	106.260843	2	10	15.24	S	106	15	39.03	E
319	-2.170821	106.350751	2	10	14.96	S	106	21	2.70	E
320	-2.170667	106.512577	2	10	14.40	S	106	30	45.28	E
321	-2.170649	106.530557	2	10	14.34	S	106	31	50.01	E
322	-2.152824	106.242846	2	9	10.17	S	106	14	34.25	E
323	-2.152809	106.260828	2	9	10.11	S	106	15	38.98	E
324	-2.152732	106.350735	2	9	9.84	S	106	21	2.65	E
325	-2.152715	106.368716	2	9	9.77	S	106	22	7.38	E
326	-2.152579	106.512559	2	9	9.28	S	106	30	45.21	E
327	-2.134626	106.3687	2	8	4.65	S	106	22	7.32	E
328	-2.134491	106.512541	2	8	4.17	S	106	30	45.15	E
329	-2.116553	106.350704	2	6	59.59	S	106	21	2.53	E
330	-2.116537	106.368684	2	6	59.53	S	106	22	7.26	E
331	-2.116521	106.386665	2	6	59.48	S	106	23	11.99	E
332	-2.098464	106.350688	2	5	54.47	S	106	21	2.48	E
333	-2.098448	106.368668	2	5	54.41	S	106	22	7.20	E
334	-2.098416	106.404629	2	5	54.30	S	106	24	16.66	E